

Pussy Cat

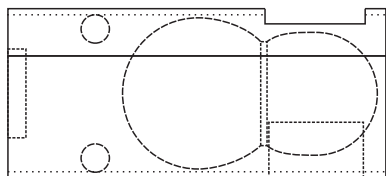
Designed and demonstrated by Denise Donovan

This creates a cat in repose on the table with a curly tail and head that can be rotated (or fixed if you wish).

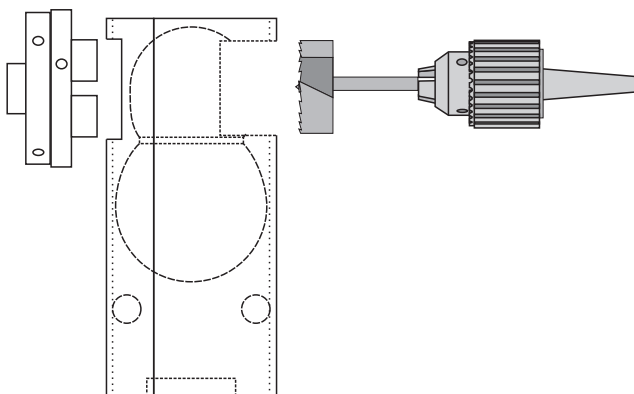
Three pieces of wood are required: For the finished body of the cat 65 x 90 x 200; for the separated and wasted lower part of the body 25 x 90 x 200; for the head 80 x 80 x 100.

Join the two body parts with a paper joint (See Paper Joints in

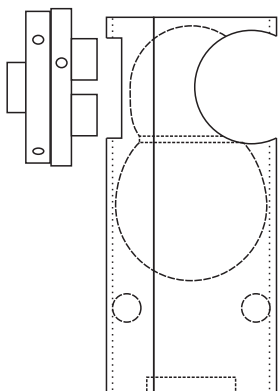
<https://sawg.org.nz/tipsnjigs/>)



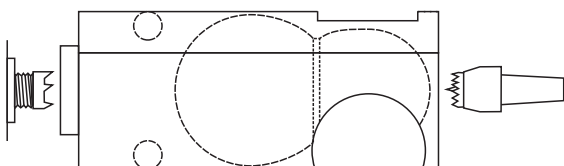
Use a 53mm Forstner bit to drill a 10mm deep hole centred 163mm from the headstock end on the thinner side of the paper joint.



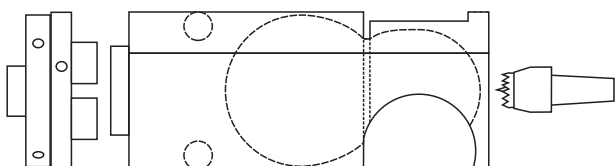
Mount the wood on a 50mm chuck expanded into the 53mm Forstner bit hole. Now drill a 50mm diameter hole 30mm into the wood.



Use a hollowing tool to cut the inside of the drilled hole to fit the 60mm diameter shape of the head you will make later. Sand this inside surface. Remove the wood from the chuck.

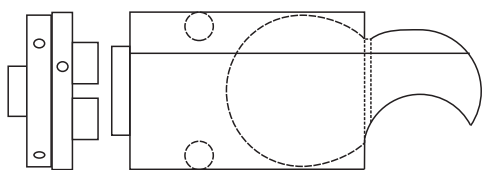


Mark the centres on both ends of the wood and mount it between centres. Turn the wood to a bit more than 80mm diameter. Mark pencil lines around the wood at 10, 40, 60, 100, 130, 140, 163 and 195 mm from the headstock end. Create a 10mm long x 46mm diameter spigot on the headstock end.

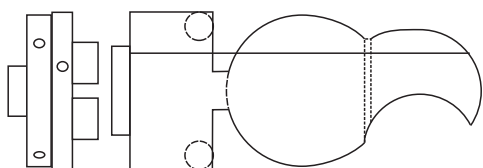


Mount the wood in a chuck. Keep the tailstock up for extra support. Centrally between the 130 and 140mm lines use a parting tool to cut down to create a 55mm diameter for the neck of the cat.

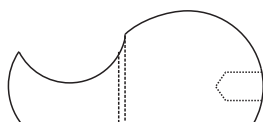
Pussy Cat p2



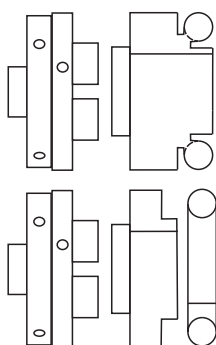
Trim off the tailstock end at the 195mm mark. At the 163mm line turn the wood to be 65mm diameter. Make the head end to be spherical and about 65mm diameter.



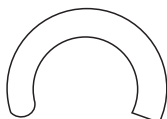
At the 100mm pencil line turn the diameter to be 80mm. Make a curving cut from there to the parting tool cut at the neck of the cat. Make a further curving cut from the 100mm line nearly to the tail of the cat to make the body an 80mm sphere. Sand all this area. Part the work off but keep the wood in the chuck to make the tail of the cat.



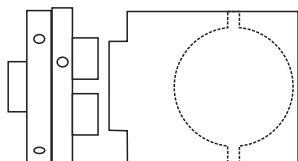
Split off the paper joint and discard the narrower part of the cat. Sand the flat surface clean. Drill a 15mm hole into the butt end of the cat to fit the tail.



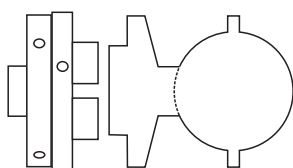
To make the tail of the cat turn a 15mm thick ring of wood from the block in the chuck. Cut and sand as much as possible of the ring. Then part it off.



Dress the block remaining in the chuck so that you can reverse the ring of wood and jam chuck or hot melt glue it to the block. Finish and sand the ring of wood. Remove it from the lathe and break the paper joint. Discard the shorter part and make one end of the longer part rounded and the other end square.



For the head mount the 80 x 80 x 100mm piece of wood in a chuck. Turn it to be round and close to 80mm diameter.



Turn the head to be a 60mm diameter sphere, but with a 4mm thick flange extending about 10mm from the centre of the sphere. Sand these surfaces. Part it off and hand sand the parting cut.



Cut away most of the flange to leave only ears. Sand all the cut areas. Paint, draw or glue on eyes, nose, mouth and whiskers of your choice.



Jam or glue the tail into the body. The head can just rest in the cavity at the correct end of the cat or you may mount it on a dowel.