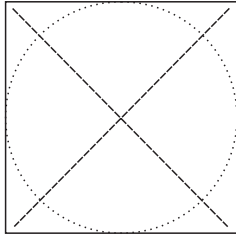


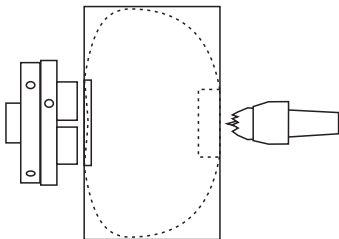
A Tealight

This plan is for a simple block of wood to hold a tealight candle. Embellishments are not shown here but the wood may be embellished at any time in the making process.



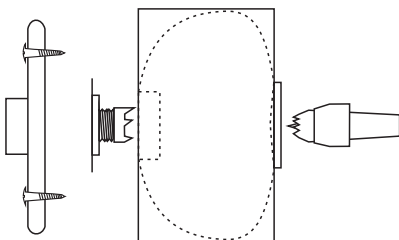
Start with a block of wood that is 130 x 130 x 80mm thick. The grain may be in any direction. Mark the centres on both of the broader sides.

A block this small is too small to cut round on most bandsaws but, if you wish to bandsaw the corners off, mark a circle on one face of the wood and cut outside that circle.

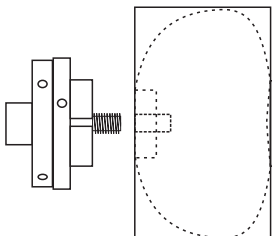


A spigot or dovetail is required on the under side of the wood so that it can be held in a 50mm chuck for turning the upper side.

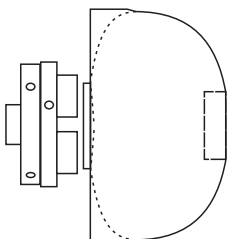
You can drill a shallow 54mm hole at the centre on the underside of the wood so that the work can be held using a chuck in dovetail mode on the lathe. Bring the tailstock up until the wood is round.



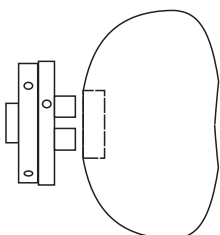
OR you may screw a 120mm faceplate to the upper side using screws at the outer corners. **OR**, you may drill a 26mm diameter hole 10mm into the top side and hold the wood on pin jaws. **OR**, you may hold the wood securely between centres. Turn a spigot on the under side 46mm diameter and 5mm deep.



OR you may mount the wood on a screw chuck. Turn a spigot on the under side 46mm diameter and 5mm deep.



Use the spigot or dovetail on the under side to mount the wood in a 50mm chuck. Make the wood round and dress the top side to remove any saw marks. Create a hole for the tealight. Make this a good fit and never deeper than the aluminium container of the tealight. This is usually a 38mm diameter by 12mm deep hole. Cut the outside curve of the tealight from the edge of the candle hole to the start of the curve to the under-side. Sand and finish all this surface.



Turn the wood over and hold it on a chuck with pin or 25mm jaws in the candle hole or make a jam chuck. Cut the underside to the desired shape. Sand and finish this side.