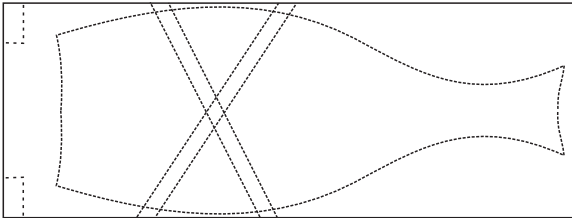
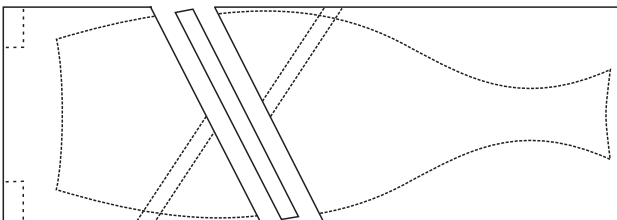


BUD VASE WITH INSET LAMINATES

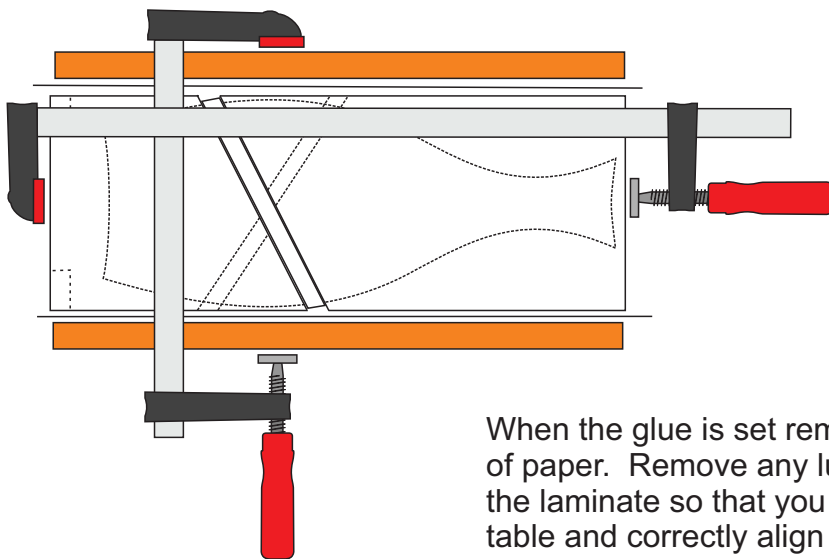
This bud vase may be any size you like. The laminates may also be any thickness and location you like. The proportions shown here are a block 75 x 75 x 200mm with 5mm thick laminates located at the centre of the bulb of the vase.



On the block of wood design the weed pot and the location of the laminations. Plan the angles to be about 30° and crossing at the centre. Greater angles and an offset crossing point can be tried in later projects.

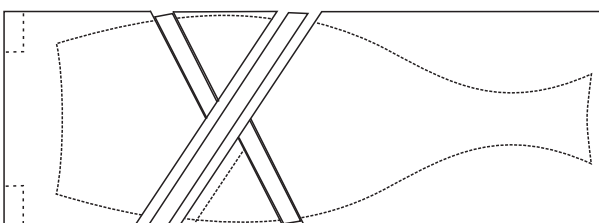


Cut the block for the first laminate. This cut will be thinner than the 5mm laminate and that is acceptable. Make the faces perfectly flat. Cut the laminate to fit within the width of the block. Apply glue to both faces of the block and both faces of the laminate.



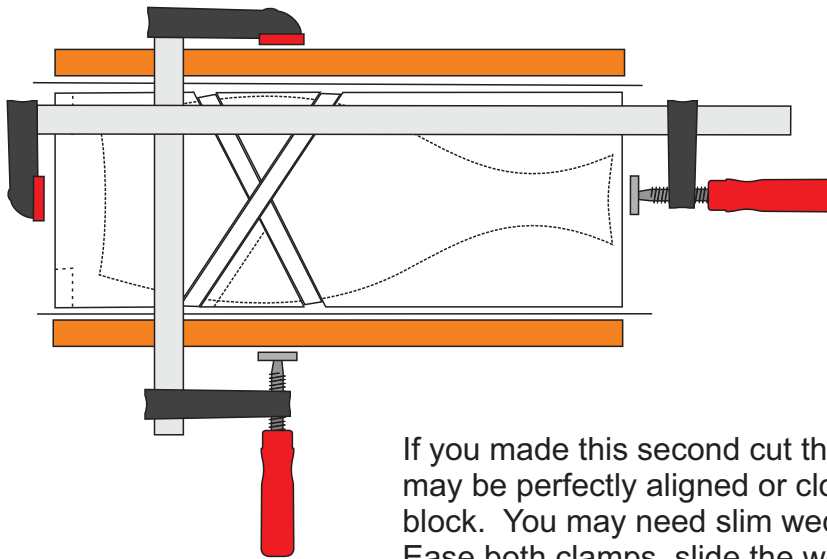
Clamp the parts together. Do this on a flat, clean table with paper under the block. Put paper along each side of the block and then a clamping block on each side. Finally clamp the parts both laterally and longitudinally. Ensure that all parts are correctly aligned.

When the glue is set remove the clamps and all the bits of paper. Remove any lumps of glue and smears along the laminate so that you can set the wood flat on the table and correctly align the next part.



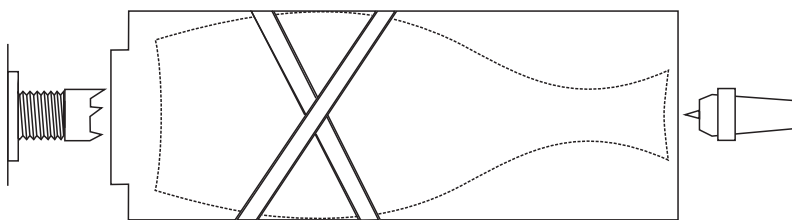
You will note that your planned second cut is no longer true due to the first laminate being thicker than the first cut. Re-design this second cut so that the laminates will cross at the centre of the wood. Cut the wood and make the faces perfectly flat. This cut may be the thickness of your saw blade or you may make exactly the thickness of the laminate. Cut the laminate to fit within the width of the block. Apply glue to both faces of the block and both faces of the laminate.

BUD VASE WITH INSET LAMINATES p2

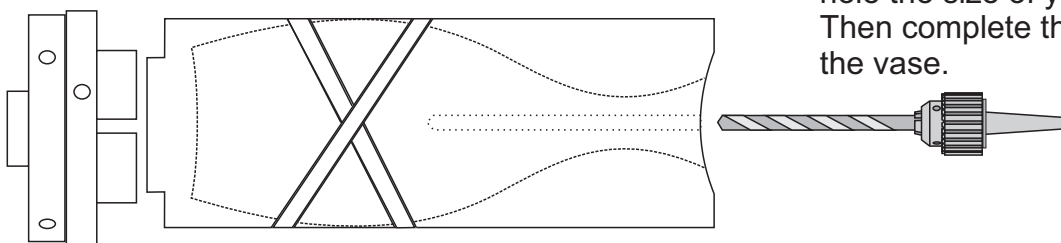


Clamp the parts together as before. Do this on a flat, clean table with paper under the block. Put paper along each side of the block and then a clamping block on each side. Finally clamp the parts both laterally and longitudinally. Ensure that all parts are correctly aligned.

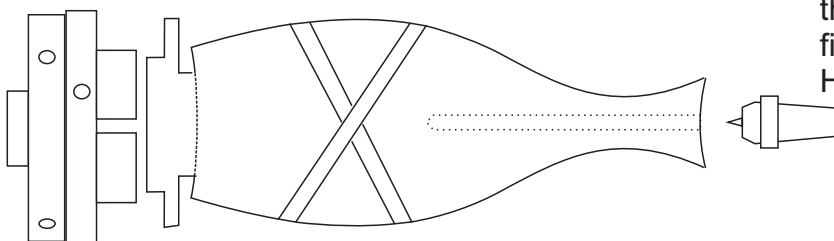
If you made this second cut the width of the laminate the parts may be perfectly aligned or close to it. Check both sides of the block. You may need slim wedges to correct the alignment. Ease both clamps, slide the wedges in and re-clamp.



Ensure that the centres marked on the ends of the wood are aligned with the centres of the laminate crossing point. Mount the block between centres. Round it off and cut a spigot for mounting in a chuck.



Mount the wood in a chuck. Round it off again. Drill a central hole the size of your choice. Then complete the top face of the vase.



Bring up the tailstock to steady the wood. Shape, sand, and finish the entire vase. Part it off. Hand finish the bottom