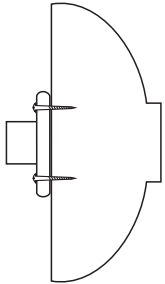


A BOWL WITH A LAMINATE RIM

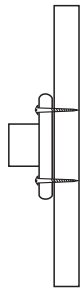
This bowl can be any size you like. The laminate wood you add to the rim is best if it is a contrasting colour. The laminate wood needs to be thick enough to mount on a faceplate and the same width as the bowl blank. A second, or more, laminates may be added following this process.



Mount the bowl blank on a faceplate (or drill a shallow hole to use a chuck in expansion mode).

Rough turn the underside shape of the bowl and make a spigot for chuck mounting.

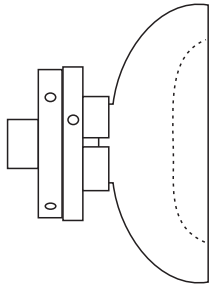
Take this wood off the faceplate.



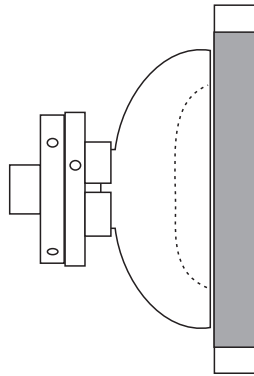
Mount the laminate wood on a faceplate.

Cut the face of this wood perfectly flat.

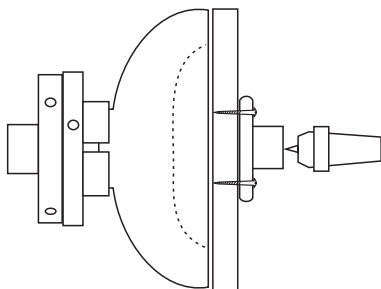
Keep this wood mounted on the faceplate and remove it from the lathe.



Re-mount the bowl on a chuck. Cut a dish into the centre of this wood. Cut the outer parts of the face of this wood perfectly flat.



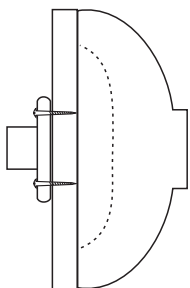
To check and ensure this flatness wrap a length of straight wood in sandpaper and press it against the bowl edges as the bowl rotates slowly.



Glue the laminate (with faceplate attached) to the bowl.

Centre it and hold it in place with the tailstock until the glue is set.

Then remove the bowl from the chuck.



Remount the bowl, now with the laminate glued on, by the faceplate attached to the laminate.

Complete the turning of the bowl as you would for any other bowl.