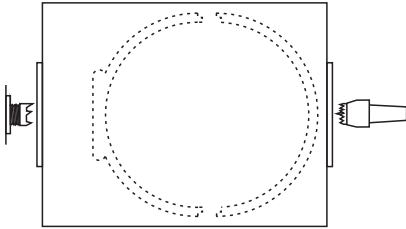
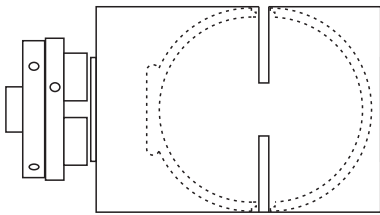


Spherical Box

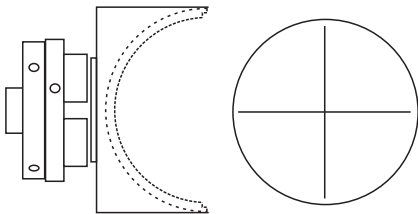
This box needs to be made from nicely figured wood or with decoration in mind. It can be made totally freehand but a sphere making jig is advised.



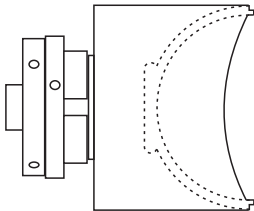
If you start with a block of wood 130mm long and 100mm square, this plan creates a box that is 90mm diameter. Mount it between centres, Turn it almost round and turn a spigot on both ends.



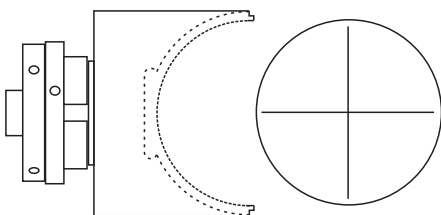
Mount the wood in a chuck. Turn it round and down to almost the finished diameter. Part the two halves of the box. If possible, keep the lower half of the box in this chuck.



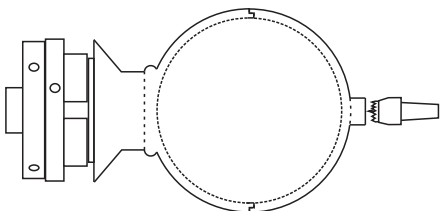
Mount the upper part of the box accurately in a chuck. There must be no wobble in the wood. Decide on the wall thickness for the box and make a circle template - see Circle Template on www.sawg.org.nz/tipsnjigs/. Use the template to aid hollowing the sphere to a perfect hemisphere. Sand all this surface to finished quality. Then cut the lips that will fit it to other half of the box later.



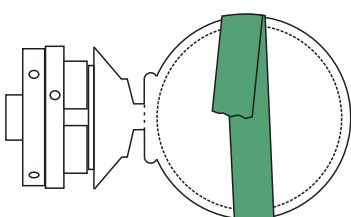
Remount the bottom half of the box accurately on the lathe. There must be no wobble in the wood. Mark the planned internal diameter of the box on the face of the wood. Cut a lip on the wood and fit the top. When finished this should not be a tight fit.



Hollow the box. Use the circle template to aid hollowing to a perfect hemisphere. Note that the centre-line for the depth of this hollowing is the join point of the two halves on the outside of the box. Sand all this surface to finished quality.



Fit the top part of the box to the bottom part and hold it in place with the tailstock. Cut as much as possible of the outside curve of the box to the finished size. Sand all this to a finished quality.



Securely tape the join of the box. Remove the tailstock and cut away the remaining wood. Sand that area to a finished quality. Part the box off from the chuck and hand sand the underside of the foot. Apply the finish of your choice.

