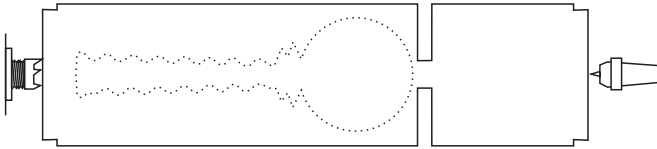


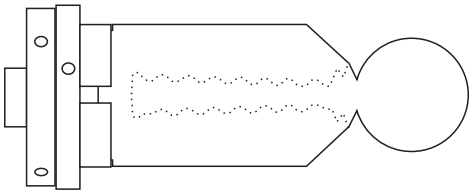
Spoon Box

Demonstrated by Terry Scott

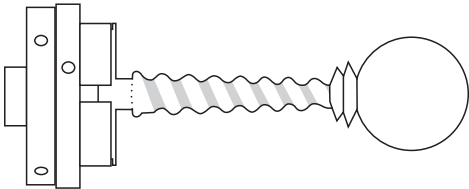
This project can be made just about any size you wish but is usually limited by the centre height of your lathe. Before you start be sure that you can make a perfect sphere for the spoon end of the project.



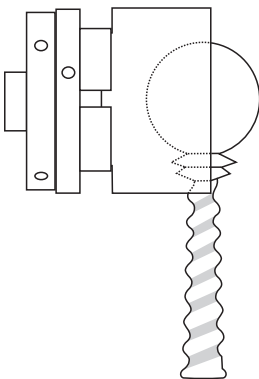
Start with wood 100 x 50 x 50mm. Mount it between centres and make it round. Cut a spigot on each end. Part off a length equal to the diameter of the wood. This will make the box lid to ensure consistency of wood colour and grain.



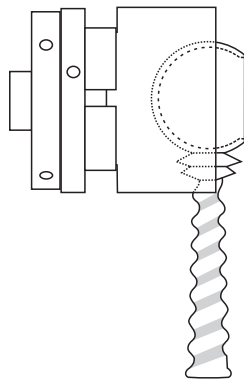
Make the end a perfect sphere. Sand and finish this before starting on the handle.



Shape the handle. Sand, decorate and finish the handle. Part the handle from the wood in the chuck.

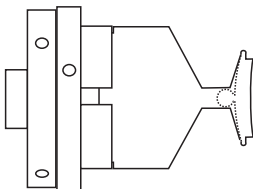


Use a piece of waste wood to make a jam chuck. This needs to have a central spherical cavity and a carved out groove for the handle. Check the look of the grain in the spoon and then put it in the jam chuck with the grain oriented for the best appearance.

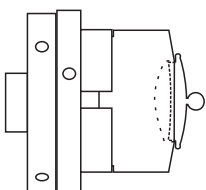


Cut the top off the sphere of the spoon. Hollow the spoon. A hole in the side or back quarter of the jam chuck can help you to measure the wall thickness of the spoon. Sand and finish inside the spoon. Measure the inside and outside diameters of the spoon opening. Remove the spoon from the jam chuck.

You may sit it briefly on a belt sander to create a little flat under the bowl and end of handle.



Make the lid using the piece you cut from the initial block of wood. Mount it in a chuck and turn it to the sizes measured on the spoon. Test fit - this lid should not be a tight fit. Cut a curve on the underside of the lid and cut away the spare wood over the top. Sand and finish the underside and edges. Part the lid off from the block in the chuck.



Use that same block to mount the lid for finishing. Cut the upper surfaces to their desired shape. Sand and finish. Remove it from the jam chuck.

