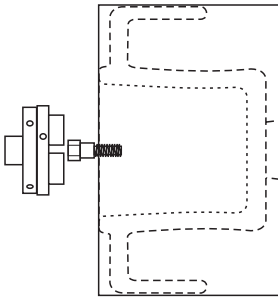


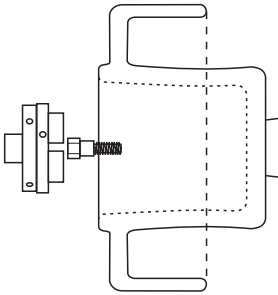
WOODEN CUP

This cup may be any size you choose as it can be used in a doll's house, as a pot plant holder, or any size in between. Good quality non-porous wood may be used as drinking vessel.

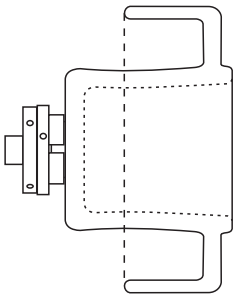
The wood you start with may be cross-grain or end-grain. The size of the block needs to be a little higher than the planned cup and as wide as the cup will be if it had a handle on all sides.



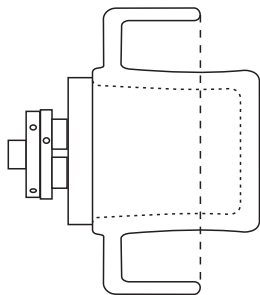
Mount the wood on screw chuck, or make a spigot and mount it in a chuck.



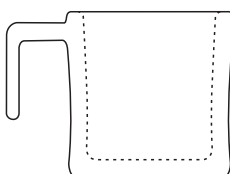
Create a spigot on the bottom of the cup for later use. Shape the outside of the handle. Cut up under the handle being sure to make a space big enough for fingers to fit yet with the handle thick enough so that it will not break. You may do some sanding now, or leave it all until later.



Hollow the inside. Sand and finish this area.



Mount the piece on a jam chuck, or vacuum chuck. Clean off the foot and finish this surface.



Select, by checking the grain direction, which part of the handle ring is to be the real handle. Cut off all of the handle ring apart from that bit. Hand sand and finish all the exposed wood.

