

TurningTalk

Turning Tomorrow's Treasures

Issue No 184

Newsletter of the South Auckland Woodturners Guild

February 2010

Annual SAWG Christmas Sale

Dick Veitch

I got the hard word from the editor (the bits in italics below) so I thought I should wait until 2010 and then type a bit and tick my name on the new 2010 writers list.

Need an article deconstructing Xmas sale- what works, what doesn't, lessons learned, insight on pricing, guidelines for future (e.g. standards, packaging, display stands etc).

To answer all that I would need to search out several books and employ a sales guru! Then, maybe, prove again that a lot of the fancy stuff does not work for our short sale of a huge variety of items.

There are probably dozens of ways to look back and judge a sale of woodturning. I can sit here and compare data from the past 11 years of December sales in Accent Point – numbers sold; percentage sold; \$\$ sold; profit and loss. In those 11 years we have offered more than 20 thousand items and sold 11,655. There is a lot of wood out there and many buyers who just like to come back for more. 2009 must be judged "Average" with 2354 items offered for sale by 32 Guild members and 54% (1267 items) sold.



Members and guests at the Sale Opening Night Wine and Cheese Evening

(Continued on page 4)



Views of just some of the items for sale at our sale and some shoppers (Bruce Wiseman assists top right)

In this issue:

Christmas Sale	1
Shavings	3
Aoraki Update	4
A Few Numbers from 2009	5
Elegant Forms Competition	6
Sponsors Pages	15

SAWG COMMITTEE

President

Dick Veitch 298 5775

Vice President

Bob Yandell 537 3815

Past President

Michael Bernard 094256782

Secretary (Acting)

Tom Pearson 575 4994

Treasurer

David Jones 299 5110

Editor

Chris White 268 0969

Members:

Mac Duane, Cathy Langley, Terry Meekan, Terry Scott, Les Sive-wright, Don Wood,

Webmaster

Rex Haslip 267 3548

Club Meetings:

Wed nights - 7.00 pm
(Doors open - 5.00 pm)

Club Rooms:

Papatoetoe Community Centre,
Tavern Lane, Papatoetoe,
South Auckland, NZ

Contact us:

Website: www.sawg.org.nz

Correspondence:

Mark Savill
26 Glenross Drive
Wattle Downs
Manukau City
sam.mark@xtra.co.nz

Newsletter contributions:

editor@sawg.org.nz

Contributors this month:

Mac Duane
Ross Johnson
Cathy Langley
Terry Scott
Dick Veitch

Club calendar

All the activities listed here are in our clubrooms in the Papatoetoe Stadium Community Centre, Tavern Lane, Papatoetoe (see www.sawg.org.nz for directions). On our regular Wednesday evening meetings, the official meeting starts at 7.00pm and is followed by a "Show-&-Tell" session where members can show and discuss their work.

For those wishing to make use of the machinery, do some shopping, check out our library, get a little extra advice, or just socialise, the doors open at 5pm.

We have a Table Prize for each term. This is members work on display - lessons learned (half-finished, flawed, or failed) to the best you can do that has been brought to the "Show-&-Tell" table during the term.

TERM 1 2010

3 February	First night of term , Term project "A wig stand" with Lindsay Amies
6 February	"Visit your Neighbourhood Woodturner" Weekend
7 February	"Maintenance of your Lathe and Chucks"
10 February	Embellishment with Terry Scott
13 February	Working bee 8:30am - 10:30 am at Clubrooms
17 February	Pen Making with Bruce Wood
24 February	Reptiles with Jim Newland
28 February	Finishing Options with Rex Haslip
3 March	Hands On - Term Project (Wig stand)
10 March	Feet on bowls, Boxes and Bins with Dick Veitch
17 March	"Wood" Stories led by Bob Yandell
24 March	Presentation by Brian Latimer of Teknatool
31 March	Last Night of Term - Laminating, judging of term project, life members award
10 April	Mystery Demonstrator (TBC)

Coming Events

12-14 March	Lake Taupo Woodturning Jamboree
26 March	NAW Shane Hewitt demo at North Shore Guild
26-28 March	Turnfest Australia 2010 , Gold Coast
24 April	Fishys Open Day
14-18 July	2010 Australian Woodturning Symposium , Brisbane

An up to date Calendar of Events can always be viewed at www.sawg.org.nz

"Mac-sim" of the Month

"Be the Person that you thought you would become"

-Mac Duane



The South Auckland Woodturners
Guild

is a member of the
National Association of
Woodworkers NZ Inc
and the
American Association of
Woodturners



Win a Dremel!

The NAW currently has a prize draw offering a Dremel Stylus Cordless Rotary Tool, with docking station and accessories (worth \$149 RRP), which is open to any who join the NAW before 31 March 2010.

Another Dremel will be won by the NAW member who nominates the most new members before 31 March 2010.

SAWG members can join NAW for \$45 (\$50 for non affiliated subscribers which is still great value).

Full details and application forms are best viewed at www.naw.org.nz.

Members joining can nominate "SAWG Editor" as their nominator and in the event that this is the winning entry in the second draw, the prize will be donated to the guild.

Club Subscriptions

No draw for prizes on this one but members will have received in their Christmas mail their renewal forms for membership. At a reasonable \$35 per annum, I am confident you will agree, membership **does** have its privileges.

The committee has planned out another great year and you are asked to return your subscription remittance as soon as possible.

First Meeting of the Year

Our year kicks off this **Wednesday night, 3 February**, with the term project being a wig stand demonstrated by **Lindsay Amies**. At the end of the term, after the award for the best stand, stands will be presented to "Look Good Feel Better" a free service to help women with cancer offset appearance-related changes from treatment.

Jim Downs Blanks Clearance Sale

Jim tells me that he is delighted with the significant reduction of his stocks of woodturning blanks as a result of the promotion he ran prior to Christmas which saw the Guild coffers benefiting to the tune of 50% of the sale proceeds.



NATIONAL ASSOCIATION OF WOODWORKERS NZ INC.
MEMBERSHIP COMPETITION

Win one of Two Dremel Stylus 7.2V Lithium Ion Cordless Rotary Tools with docking station and 25 Accessories valued at \$149(RRP), sponsored by

DREMEL

Prize number one
Join the NAW between 1 December 2009 and 31 March 2010 and be in a draw to win one of the above. Pay \$50, or if you are a member of a Club or Guild affiliated to NAW pay \$45 now, and be paid up until 31 March 2011.

Prize number two
The second Dremel will go to the member nominating the most new members joining between 1 December 2009 and 31 March 2010, (in the event of a tie the winner will be decided by lot).

All you need to do is ensure that the new member of the NAW introduced by you indicates when applying for membership that you introduced them. Your name and address can either be shown on the membership application form (available from any NAW Committee member or at <http://www.naw.org.nz/membership.html>), or if an on-line application is made, by inserting your name and address in the box for 'Existing Membership Number if Renewal'.

DREMEL

Inspiration and innovation in one simple tool – imagine what you can do with Dremel!

Dremel's Rotary range is the perfect tool for the home handyman who loves creative DIY jobs.

With more than 150 accessories and attachments, the Dremel system is the most versatile tool platform in the world.

Designed to suit home innovators and creative artists, Dremel's simplicity and functional design is perfect for even the most intricate of tasks such as jewellery making, ceramics, wood carving, furniture restoration and glass etching.

Priced from just \$149 and available from all good hardware stores – just imagine what you can do with Dremel this summer!



While the promotion has concluded, Jim says he still has plenty of stock left and invites members to visit him anytime to pick up some quality turning blanks for their anticipated turning needs this year.

Thanks Jim for your very generous gesture to the Guild which is much appreciated.

Closing Dates...

Entries are closing shortly for the **Taupo Woodturning Jamboree** (closes 19 February but limited to 100 attendees) and the **Easter Show** (closes 26 February) so if you want to attend/ enter, better pull finger!

Turning Blind

Surfing the other day, I came across **Dennis DeVendra** (www.blindwoodturner.com).

Dennis relies primarily on the senses of touch and sound to accomplish his turning as he is blind.



Dennis DeVendra

Dennis has been turning since 2004 and his accomplishments in the area of hollowing have seen his engagement by Kel MacNaughton (Kelton Tools) as a "Tool Design Consultant".

Working Bee

If you are able, set aside a couple of hours this coming **Saturday, 13 February**, for the usual monthly clean up and small jobs that need regular attending to keep our clubrooms in the great shape they are.

You should have had, like me, your conscience pricked by our Presidents closing remarks at the end of the year and it is up to more of us to help out the small cadre' of regulars who keep the clubrooms up to scratch.

The muffins are great (see, I have attended a few Dick) and it is always good to catch up with your 'turning mates'.



We don't want our clubrooms and gear to start looking like this...

(thanks to the anonymous contributor who sent this photo, allegedly Bob Yandells lathe, thru to me)

(Continued from page 1)

In the early days we frequently thought we had found a magical item that everybody wanted, but the next year few were sold. By pure chance some years have had many of one item and few of another. Then there will always be the customer who looks for a really common bit of woodturning and it is not there. This year we had more, and more expensive, pens than ever before, and they sold. Then there was the battle of the spheres – the ones dumped in big bowls sold while the few presented on a nice little pedestal did not. Did buyers recognise the loose sphere as a fun thing, but not the one displayed on the stand? Certainly few recognised Tippee Tops until they were demonstrated – then they sold.

Some turners do have lines of product that are liked by many buyers but they have to get out there at an attractive price – and that may be inadequate for the maker. But, if the market is assured, and an assembly line built to reduce costs, then it may be a good return – or you may end up with a hundred of them in the cupboard!

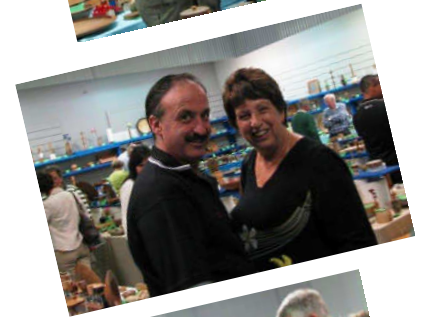
Suggestions on “patter” that works with customers, anything else that relates.

Used car salesmen types may be able to learn an approach but most of us (except one I know who can spot the wallet size at 100 paces) are not in that “Salesman” group. The important thing is to get out and talk to the customers – it is amazing how many really do want to talk.

Would also like to raise prospect that new venue may/ will be needed so members are aware of issue and can start to leverage their individual networks with a view to finding suitable replacement premises. You will have thoughts on this aspect as well but am conscious that the earlier we can start collectively hunting, the better the prospects of finding suitable replacement venue.

Yes, we do want another sale. It is best in a location where a lot of people walk by. We will fairly surely have to pay for it.

Thanks again to Terry (Scott) for 11 years providing the Accent Point venue.



Aoraki Update

Aoraki Certificate in Woodturning Cathy Langley- Aoraki Course Coordinator

This year's two-day “Introduction to Woodturning” course, held on the 23rd and 24th of January with Dick Veitch as tutor, was fully booked. Ten students got a thorough grounding in the basics of lathe and bandsaw safety, tool use and sharpening, mounting timber, and finishing options while completing three projects. Those who finished early got a bonus, as Dick responded to a request that he turn a thin-walled natural-edged bowl, just to illustrate what's possible with more (a lot more!) practice.

2010 is our third year of offering courses in the Certificate of Woodturning programme, in association with Aoraki Polytechnic. In 2008 we delivered lessons in the Introductory and Fundamental courses (Stages 1 and 2.) In 2009 we offered those courses again to a new group of people, while the first students carried on to complete the Intermediate courses (Stage 3). This year we are running last year's programme plus lessons in the Advanced stage (Stage 4), along with Stage 2 and Stage 3 elective lessons. About 40 Guild members are now attending courses, tutoring, assisting tutors, organizing dates, and writing lesson plans.

The next lesson is “Spindle Turning Stage 3” on 20 February, followed by some make-up dates for those who missed lessons last year, and the Spindle Turning lesson for those in Stage 2 on 6 March. From that point forward, there will be at least one Aoraki lesson on almost every weekend day throughout the year (except for the second Saturday, which continues to be our Working Bee followed by a meeting of the Ornamental Turning group.) The full schedule for 2010 is being finalised now, and I will send it out shortly to all participants.

Dick in The Shed

Ok, so the headline is a bit misleading but you are reading this so one way or the other, it has worked!

The current edition (Feb/Mar) of “The Shed” features an article written by Dick Veitch on making a “chips and dip” bowl. Soooo, after you have paid your dues for SAWG and NAW membership, consider purchasing a subscription to “The Shed” magazine – good reading for us sheddies and finally they are starting to pay attention and devote column inches to us Woodturners!

The end of 2009 saw the closing of the 22nd year of South Auckland Woodturners Guild. As of that time we have 146 members, own 16 lathes, 120 woodturning chisels (more or less), a video system, three bandsaws, a great library, very useful shop, a heap of woodturning wood, and we have been in our own clubrooms for five years.

During 2009 there were 117 gatherings of people in the clubrooms involving 118 of our members (and guests) who were there to watch, talk, listen, turn and clean up after woodturning. The 28 who did not get to a meeting come from all parts of the country and have all sorts of reasons for staying at home, but we look forward to their continuing membership, sending them future newsletters, and their appearance at the club some day.

We had 40 official "Meeting" evenings attended by an average of 53 people. Just 39% of our membership attended fewer than half these meetings; 42% attended more than half the meetings. Ross Johnson and Jim Black attended 38 of the 40 meetings while Bruce Wood and Les Sivewright missed just one meeting each.

If we then add attendance at other activities, Cathy Langley was the person who entered the rooms most for meetings, training sessions, working bees, and other gatherings. If the "one or two person visits" are added in Mac Duane takes the lead as he popped in to fix, move, help, or change, something.

Working bees were the least popular activity with just 28 club members participating and an average of 7.5 people present for each working bee day. I wonder what is needed to make the housework a more attractive event for our mainly male membership?

Mini Lathes- FREE Loans

The Club has mini lathes available for use by members, at no cost, in their home workshops, club events or in the clubrooms. They come ready to go (just plug & play) complete with a Nova chuck and a set of tools. Usually they are available for two weeks, but depending on demand, extra time can be arranged. Turning blanks and a variety of finishing materials are available for purchase at the club shop.

- Enquiries to Mac Duane,
Tom Pearson
or a Committee member.



Turner Heaven!

With 11 women accompanying him away on holiday (I didn't dare ask for further clarification on that) and a "cut" dog (so even he wasn't a real male), Terry Scott ponders why he isn't allowed to start the Dremel until after 6am!



Terry Scott- New Years Day 2010

Small Centre Finder

Following Phil Youens demonstration of Christmas ornaments, Bryden Thorpe has refined Phil's idea for a small centre finder and now Dick Veitch has documented how you can make your own.

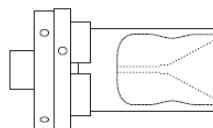
Go to www.sawg.org.nz to download this and many other useful info sheets.

Being one who needs to find the centre of various sized dowels easily, Bryden finds this gadget very useful.

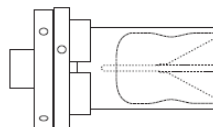


SMALL CENTRE MARKER

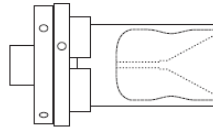
This centre marker is intended for use on pen blanks and smaller wood. The wood to be marked is placed into the cone in the center and the sharp point of the nail is then pushed from the narrow hole into the wood. The finished article shown here is 50mm long and 35mm diameter. Start with a piece of wood 70 x 40 x 40 and a sharpened nail at least 60mm long.



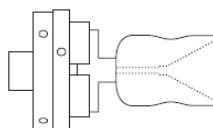
Round the wood off and dress the end



Drill a hole right through the centre. The diameter of this hole should allow the nail to slide through without wiggle.



Hollow out the cone. Drill a wider hole, but not wider than about 6mm, at the bottom of the cone. This will take the stopper that will be added to the nail later.



Shape the outside. Sand and finish all surfaces. Part it off and hand finish the parted area.



Put the sharpened nail through the hole. Wrap some tape around it just behind the point and then cut this tape to be a narrow band. Soak that band of tape with CA glue. This band of tape will stop the nail from falling out of the wood.

This page was printed from www.sawg.org.nz

WoodCentral “Elegant Forms” Competition- Third Place Getter

Terry Scott (he of few tools and even fewer words but an abundance of talent) entered a competition last year up against many international amateur turners run by Wood Central (www.woodcentral.com) and entitled “Elegant Forms”.

Contestants were invited “to define elegance for themselves and then to incorporate their vision in their entry” (they were also encouraged to think in terms of “waltz” rather than “jitterbug” in conceiving their idea of elegance!).

The judges (David Ellsworth, Cindy Drozda and Trent Bosch) criteria for selection of the winners was the sense of elegance that the piece created, in their opinion.

Terry entered a piece made from liquid amber entitled “Fly in for tea” and took third place—congratulations Terry.

Judges comments included:

“an excellent idea and successful design... shows a lot of personality”

Cindy Drozda

“...gains its elegance more from its gestures than its individual elements... sassy attitude”

David Ellsworth

“..enjoyed looking at the whimsical nature of this piece— almost an Alice in Wonderland type pot. Great execution and idea”

Trent Bosch

It is worth noting that two of the three judges mentioned Jacques Vesery when commenting on this piece.

Rumour has it that Jacques will be visiting SAWG for a one day visit later this year (see www.jacquesvesery.com) for a taste of Jacques work.

Terry modestly described this piece to the judging committee as “...what I consider to be my best piece to date”.



TIMBER

WOODTURNING BLANKS, SLABS & PLANKS

- GOOD SELECTION TO CHOOSE FROM -
- RECUTTING AND MACHINING SERVICE -

PHONE OR FAX 09 238 6197

JIM DOWNS

15 COULSTON RD, R.D.2, PUKEKOHE EAST



Suppliers of Abranet and Klingspor abrasives sandpapers, discs and belts.

- Richard Lawton -

Ph: (09) 575 7681

GP SAWDOCTORS LTD

Alan Gater & Natalya Gater

21 Andromeda Crescent, East Tamaki, Auckland, New Zealand
T: 09 274 1700 F: 09 529 9081 E: sales@gpsaws.co.nz



MACHINERYHOUSE

Ph: (09) 2717 234 Fax: (09) 2717 237

Unit D/38 Highbrook Dr, East Tamaki 1701

PO BOX 276079 Manukau City

www.machineryhouse.co.nz email: info@machineryhouse.co.nz

BRIWAX
The Professional's Choice



Razor-sharp, long-lasting edges for turners

www.hunterwoodturningtool.com

wattyl®

All products available from the Wattyl Trade Depots.
Manukau, 15 Jack Conway Ave. Phone: Jason 263 6848
Takanini, 349 Great South Rd. Phone: Taunei 299 2137

Special rates for SAWG members

TIS Tool & Industrial Supplies Ltd

Kris Keeman

Sales Director

Tool & Industrial Supplies Ltd

Mob: (027) 226 9662

Ph: (09) 272 9191

Fax: (09) 272 9196

Website: www.toolandindustrial.co.nz

Email: kriskeeman@yahoo.co.nz

Unit 17/18
19 Ormiston Road
P.O. Box 64440
Botany Town Centre
Botany Downs
South Auckland
Auckland

Turning Tools Ltd



Ian & Pauline Fish

18c Roseberry Ave
Birkenhead, Auckland
NEW ZEALAND 0626

Ph: 09 418 1312 Mob: 027 284 8815

Email: ipfish@xtra.co.nz



Richard Lawton

Phone: (09) 575 9849 Fax (09) 575 9365

www.naturaloils.co.nz

Suppliers of the following woodcraft products:

- ORGANOIL - Natural Oils Timber Finishes
- OSMO - Wood Finishes from Germany
- LIBERON - Oils Waxes and Dyes
- TUNG OIL - Pure unmodified raw Tung Oil
- SUNDRY - Shellacs, Shellac Reducer, Citrus Thinners
- KLINGSPOR - Abrasives from Germany

CARBA-TEC

TOOLS FOR WOOD

CARBA-TEC NEW ZEALAND LIMITED

Grant Oxenbridge

110 Harris Road, East Tamaki
PO Box 259 126, Greenmount, Auckland
Phone (09) 274 9454 Fax (09) 274 9455
Ph 0800 444 329 (orders only)

Email grant@carbatec.co.nz Website www.carbatec.co.nz

Available as Milled Timber, Slabs or Wood Turning Blocks
Rimu, Black Maire, Miro, Rewarewa,
Tawa, Kahikatea, Rata & Macrocarpa

Ross & Heather Vivian VIVIAN INDIGENOUS TIMBER

P.O. Box 7, Stratford, Taranaki
Ph/Fax (06) 765 5219
Email: h.rvivian@xtra.co.nz

Owners of one of the first areas of native bush registered
with a Sustainable Forest Management Plan in N.Z.



POWERTOOL CENTRE

88 THE MALL
ONEHUNGA

PH: (09) 634 2511
FAX: (09) 634 1329

STEEL TOOLZ LTD
Distributor of King Arthur's Tools
Gary Steel



katools.co.nz
021 103 8844
06 7510 114



steelgi@hotmail.com
check out www.katools.com

CEG-BROOK
ELECTRIC MOTORS
VARIABLE SPEED DRIVES

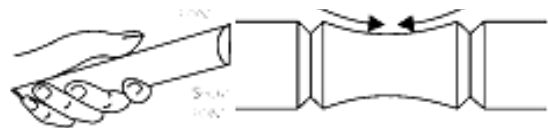
Motor Technologies Ltd Trading as: CEG-BROOK
Postal: PO Box 204 198, Highbrook, Auckland 2161
Physical: 63 Allens Road, East Tamaki, Auckland
Phone # 09 274 5353

A BEGINNER'S GUIDE TO WOODTURNING

Original artwork and text by George Flavell

Now in its sixth edition with 58 pages of
clear line drawings and text specifically
aimed at the learner turner. Safety, tools,
wood gathering, spindle work, bowls,
hollow forms, and more.

Just \$20.00, sent to the Guild Secretary
(more if you live further than a local
postage stamp away).



If undelivered, please return to:
24 Botanic View Rd, The Gar-
dens, Manukau 2105,
NEW ZEALAND

Place
Stamp
Here