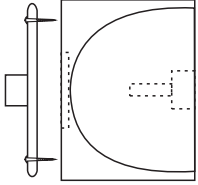


WIG STAND

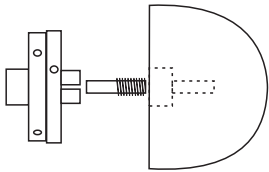
Based on a photo in MWG Keen Edge

Wig Stand Head



Start with a blank of lightweight wood 150 square by 110mm thick. This can be held as a square in a large chuck or on a faceplate with wide-spaced screws.

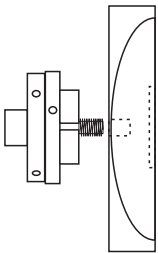
Flatten the face that is to be the underside. Make a dovetail to fit a 25mm chuck by 15mm deep. This will also be the dovetail to fit the shaft of the wig stand. Or you may drill an additional hole to remount this on a long screw chuck.



Turn the wood around and re-mount it on a 25mm chuck or long screw chuck. Round off the top of the wig stand. The upper half of this top is almost a hemisphere curving into almost straight sides for the lower half. This should now be about 140mm diameter and 100mm high. Sand and finish.

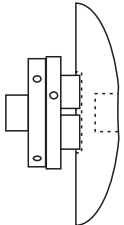
Oil and wax finishes are not recommended but polyurethane or lacquer may be used.

The Base



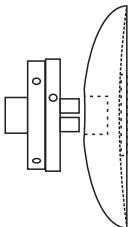
Start with a block of heavy wood about 160mm square and 50mm thick.

Mount this on a screw chuck. Flatten the bottom (not concave) and make a shallow dovetail to fit a 50mm chuck.



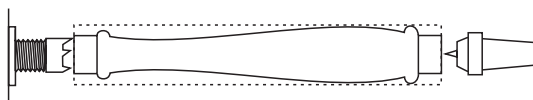
Turn the wood over and remount on a chuck using the dovetail. Round the wood off. Make the very top of the curve into a flat or slight concave where the shaft will fit. Make a dovetail to fit a 25mm chuck by 15mm deep. This will also be the dovetail to fit the shaft of the wig stand.

You may add beads and decoration to this surface. Sand and finish.



Turn the wood over and remount on a 25mm chuck or jam chuck. Cut the bottom to a slight concave to remove the chuck dovetail. Sand and finish.

The Shaft



Start with a piece at least 240mm long and about 40mm square. Place it between centers. Make a 25mm diameter by 14mm long spigot on each end. Turn the remainder to a shape of your choice.

