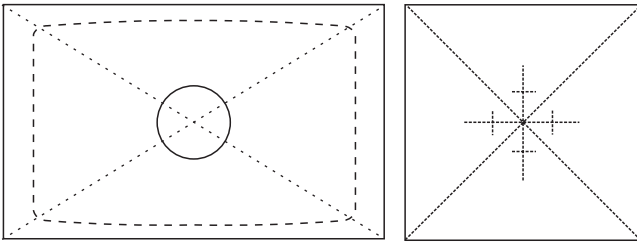
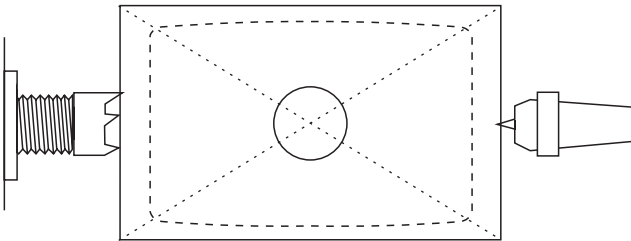


## SQUARE-HEAD MALLET



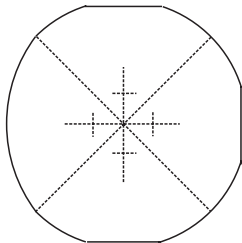
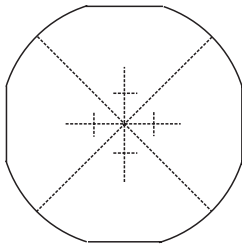
Start with a block of heavy wood 130mm long and 80mm thick both ways. The grain should lie along the long axis. Drill a 25mm hole through the centre, across the lie of the grain.

Mark up the ends with the diagonals going all the way to the corners. Mark four 10mm offsets parallel to the faces of the block.



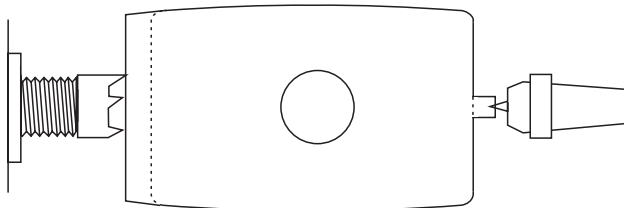
Mount this block between centres. You do not need to round it of completely. Turning the offsets later will take away about one quarter of the width, ie one eighth either side of the centre line of the original flat face.

Draw four lines along the fresh-cut faces to join with the diagonal lines on the ends.

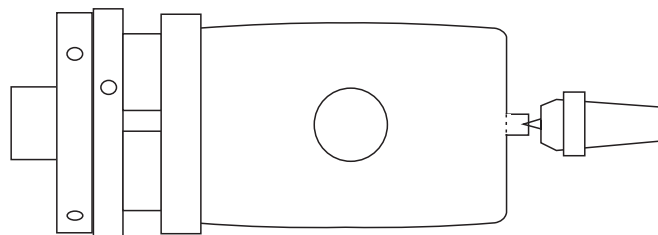


Remount the block between centres with both head and tailstock at the offset markers to the same side of centre. Turn that face just up to the longitudinal pencil marks. Repeat for each face.

Sand the faces longitudinally to preserve the line between the faces.



Finish the outer end down to a small central spigot.



Make a shallow jam chuck. Turn the mallet head around and into this. Then turn and finish all but a small bit in the centre. Finish the centre areas by hand.

To assemble the mallet apply glue to all surfaces that will be in contact. Slip the handle into the head with the saw cut at right angles to the length of the head and drive it home. Fit the wedge and drive it home. Leave the glue to set and then finish by hand.