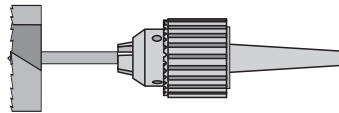
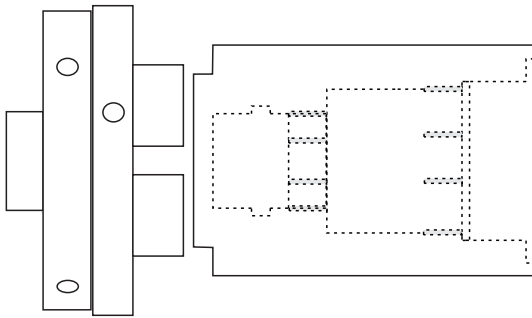
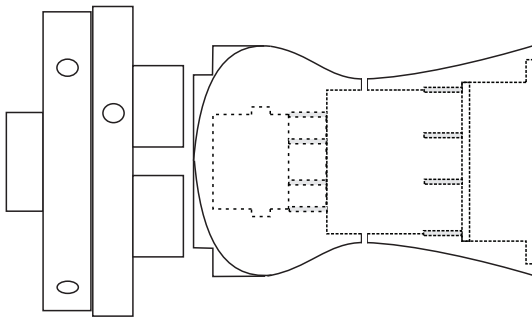


## Crushgrind Wood

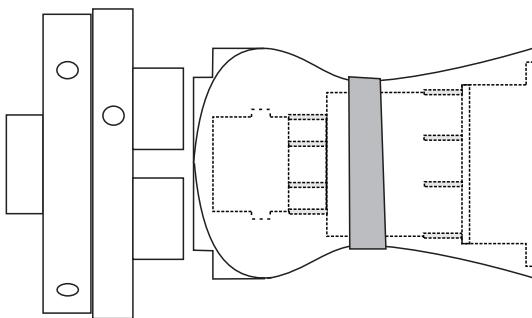
The Crushgrind Diamond mechanism has no extended centre and thus may be fitted into a grinder of any length you choose as long as it is greater than about 90mm. The lower 55mm (Maximum) is the part to twist. Start with a block about 65 x 65 x 95mm. Mount this between centres, turn it to a diameter of 60 to 62mm and cut a spigot on the top end.



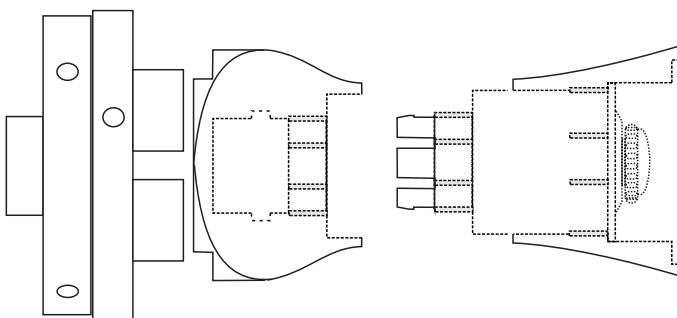
Drill a 54mm hole 2mm into the end. This is for later remounting. Then drill a 42mm hole 19mm in from the end. Then drill a 38mm hole 55mm in from the end.



Turn as much as possible of the length of the work to your desired shape. Sand and finish all this area. Use a thin parting tool separate the bottom from the top at the half-length point. Dress these cut faces if needed. Carve the six grooves needed for the six ribs on the lower part of the mechanism. With the lower part separated from the upper you can test these for a good fit.



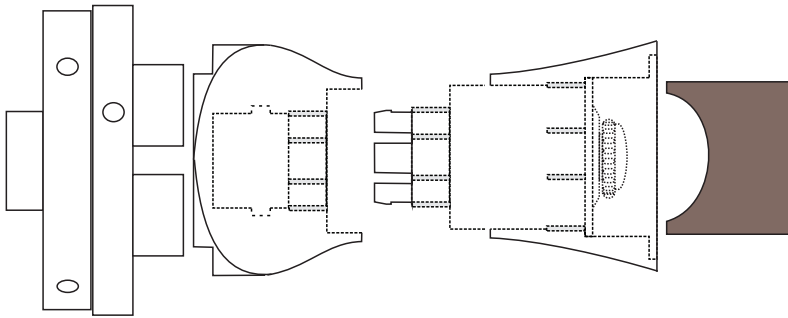
Tape the lower half to the upper half. Re-drill the 38mm diameter hole to be 55mm from the lower end of the mechanism - this action allows for the thickness of your parting cut. The total depth inside the mechanism may now be too deep for your drill. Remove the lower part.



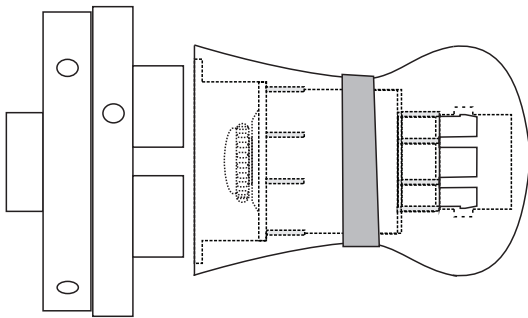
Drill a 25mm diameter hole to at least 75mm (85mm will be better) from the foot of the mechanism. Cut a notch 2mm into the side of that 25mm hole. This notch to extend from 70 to 75mm from the base of the mechanism.

Carve the six grooves needed for the six ribs on the lower part of the 25mm wide part of the mechanism.

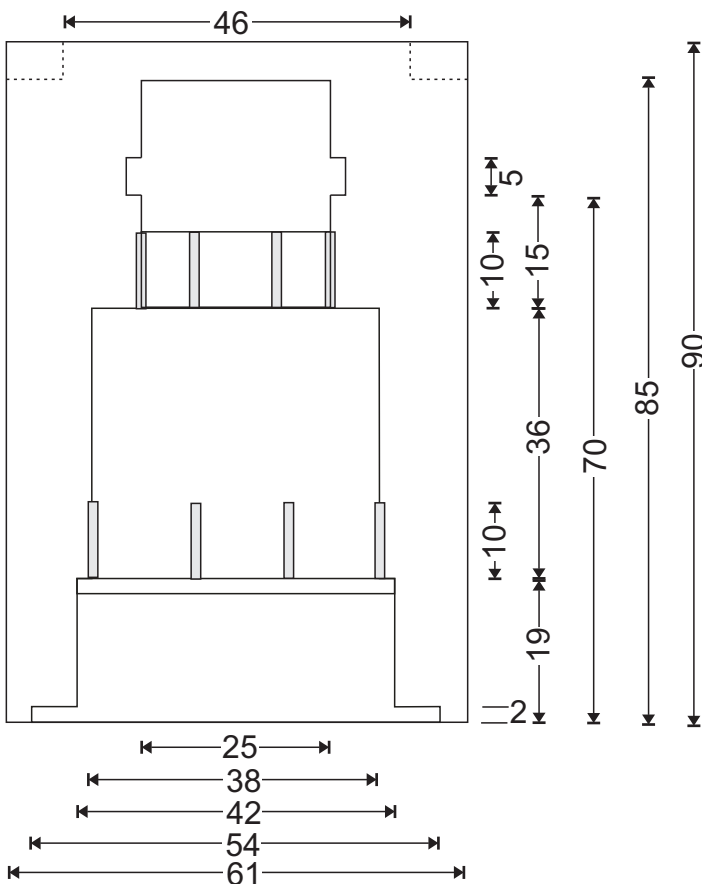
## Crushgrind Wood p2



Cut a ring of wood that will push on the outer edges of the under-side of the mechanism. Fit the mechanism to the lower part of the work. Then fit that to the upper part of the work and push it into place using the tailstock of your lathe.



Again, tape the upper and lower parts together. Turn the work end-for-end and expand the chuck jaws into the 54mm cavity in the base. Turn away all surplus material around the head of the work. Sand and finish this area.



Mechanism

