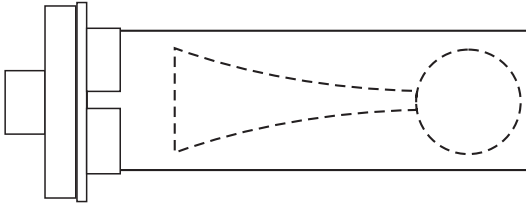


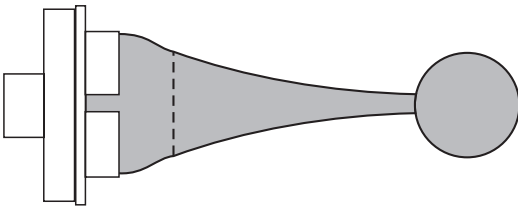
SPOONS

The design shown here is for a salt spoon 100 mm long with a 30 mm diameter bowl. If you plan to make more than two spoons then it will be wise to make the outer shape of the bowl and curve of the handle to a pattern that can be repeated exactly for fitting into the jigs for cutting and hollowing.

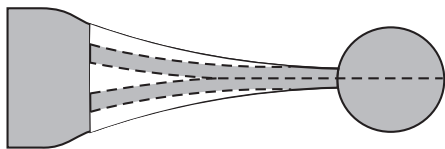
This project can make two spoons or you can select wood where one side has faults and can be wasted.



Mount a 40 mm x 40 mm x 130 mm long blank by one square end in a scroll chuck.



Cut to shape. Sand the 30 mm ball that is to be the spoon bowl and at least the lower one third of the handle.



Remove the turned wood from the lathe. Use the square end to hold it firmly while you cut with a bandsaw or jigsaw first up the centre, then each side of the handle and finally remove the pair of spoons from the supporting block.

The details that follow using wood on Cole jaws are good for making mass-produced spoons. You can make similar jaws attached directly to the chuck using a Teknatool soft jaw set. See <https://sawg.org.nz/sawg/wp-content/uploads/2022/09/Soft-Grip-Chuck.pdf>



With the soft-grip jaws closed cut the centre to be slightly smaller than the half-spoon blank. Ensure that the top edge of the cut is a slight overhang and the bottom of the cut will support the bottom of the half-spoon blank.

Cut away the edges of two quarters of the soft-grip jaws to make space for the spoon handle.



Grip a half-spoon blank in the jaws and hollow it out. Sand this cut area.

