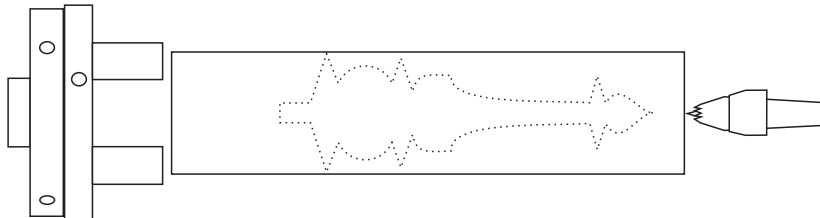
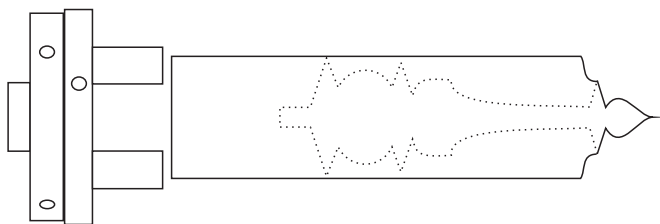


A Finial

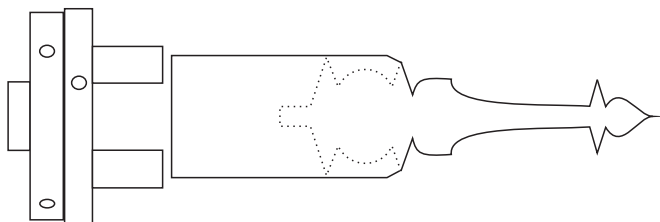
A finial may be any size you want and contain as many elements as you desire. It may be dark or light, thin or thick, sharp or rounded. This project sheet is intended to show the making process, not a design to use for every occasion. When designing a finial please try to make it an integral part of the overall plan and not a stuck-on addition to the work.



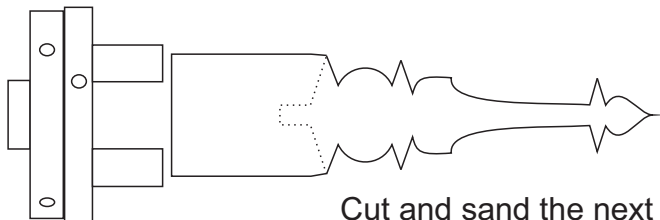
Mount finial material that is 20 to 25 mm square in a pin jaw chuck. Bring up the tailstock for added security. Turn the material to round.



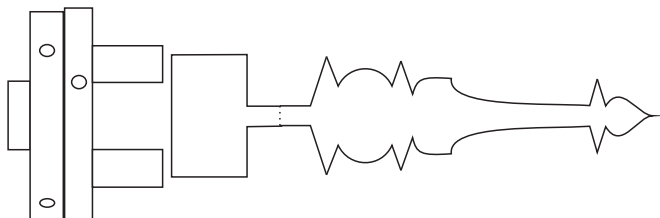
Remove the tailstock and cut just the outermost element of the finial. Sand this area.



Cut and sand the next part of the finial. It is important to keep the part towards the headstock full size and strong.



Cut and sand the next part of the finial. Do not touch the previously turned parts with a chisel but sanding is possible.



Cut and sand the last little bit and prepare to part it off. You can now gently apply a finish. Part it off.

