

# EMERGING BOWL



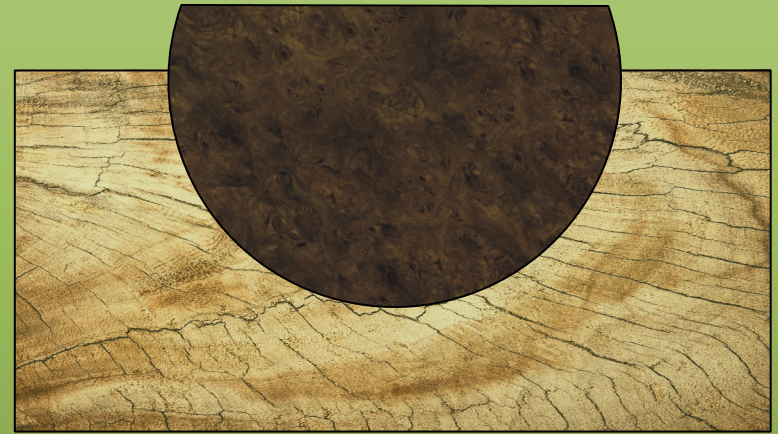
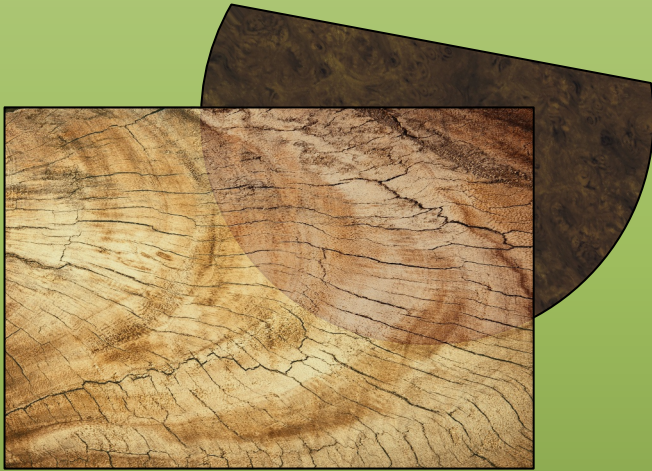


# ***EMERGING BOWL***



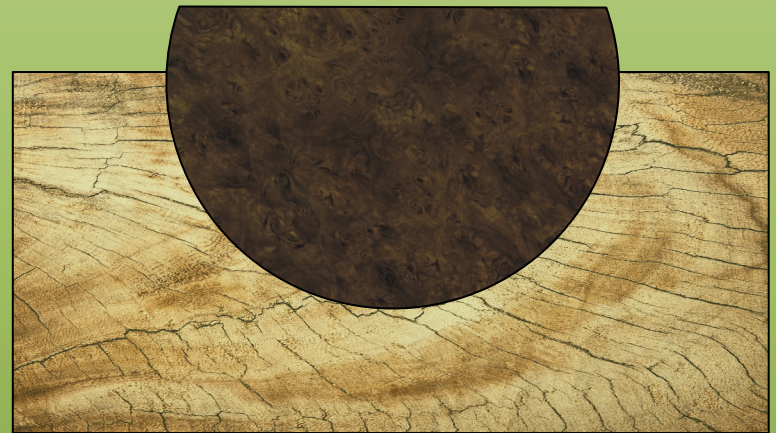
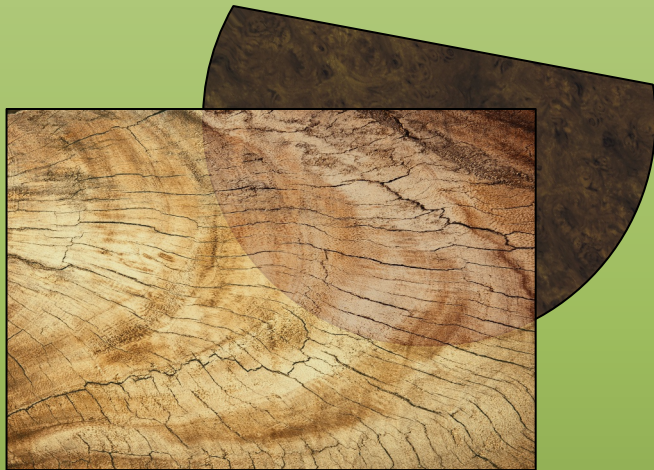


**ALLOWS YOU TO TURN A NON  
SPHERICAL BOWL**



**ADVANTAGE  
ALMOST ANY SHAPE BOWL  
MAY BE USED**

# ***CONTRASTING WOODS***

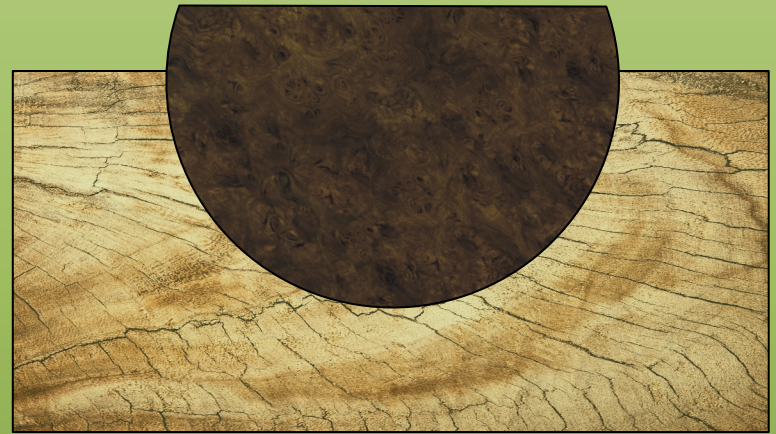
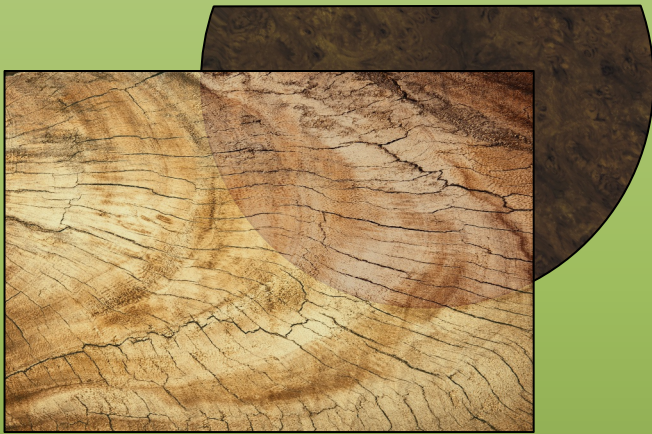


***EASIER & SAFER TO TURN & SAND***

***NO FANCY TOOLS REQUIRED***



# ***DESIGN OPTIONS***

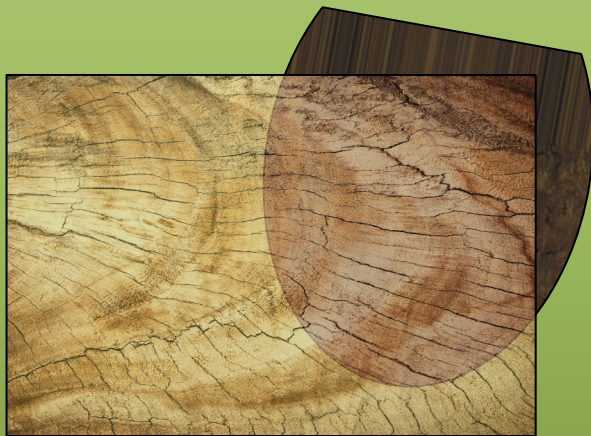


***EASIER & SAFER TO TURN & SAND***

***NO FANCY TOOLS REQUIRED***

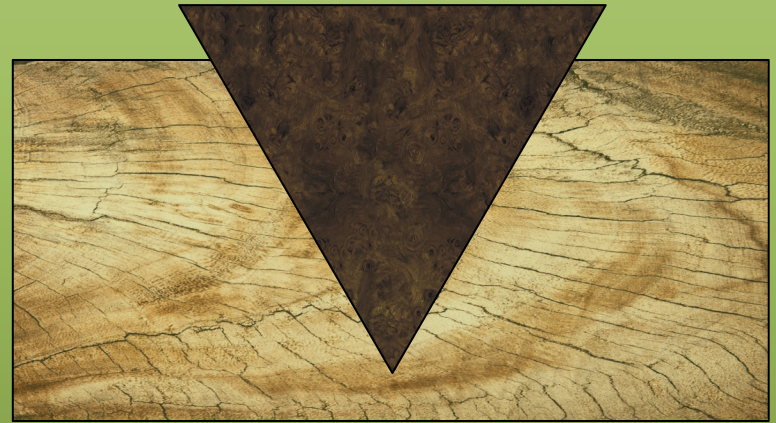
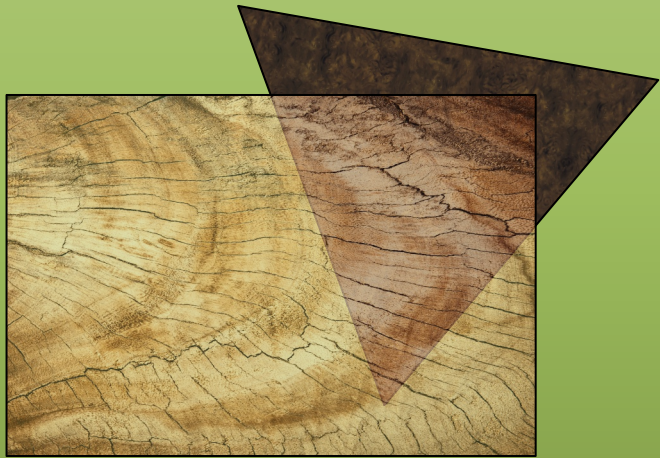


# ***DESIGN OPTIONS***





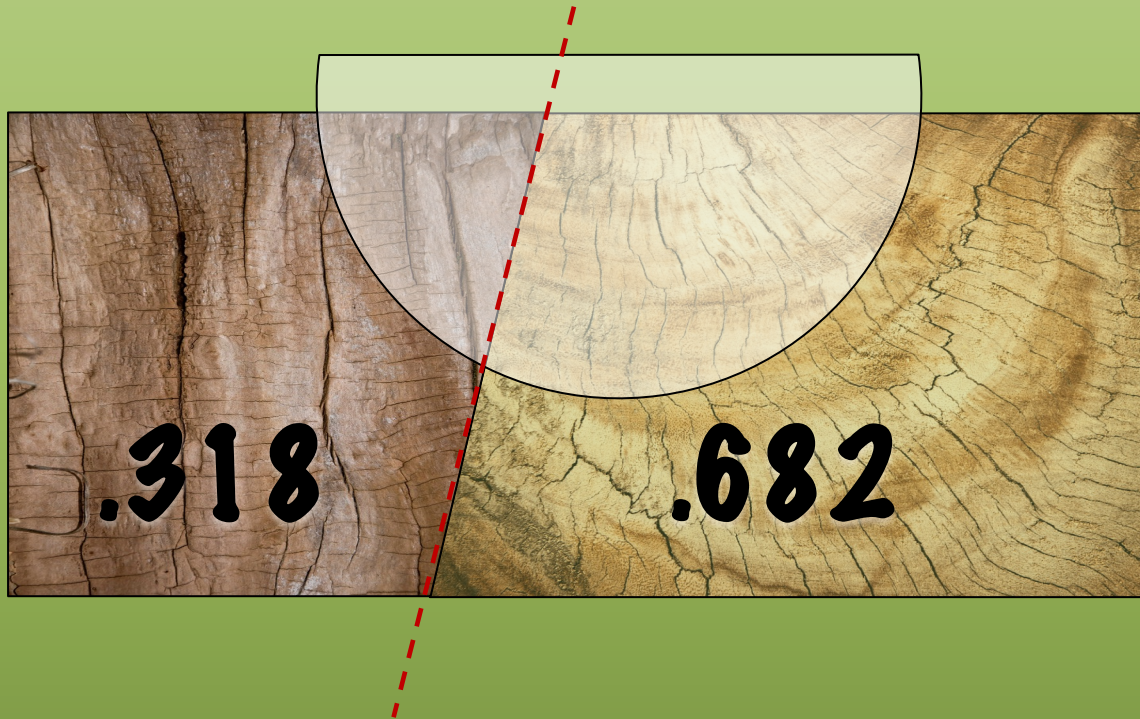
# ***DESIGN OPTIONS***





# ***FIRST CUT***

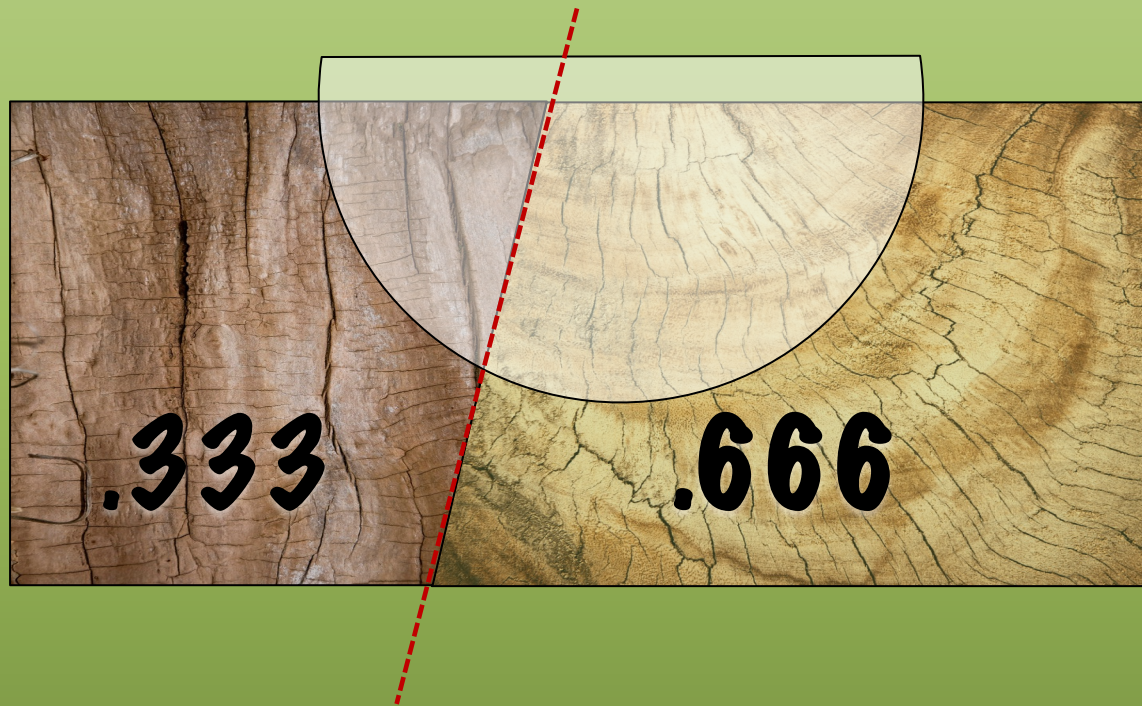
***ANGLE 10°***



***FIBONACCI GOLDEN RULE***



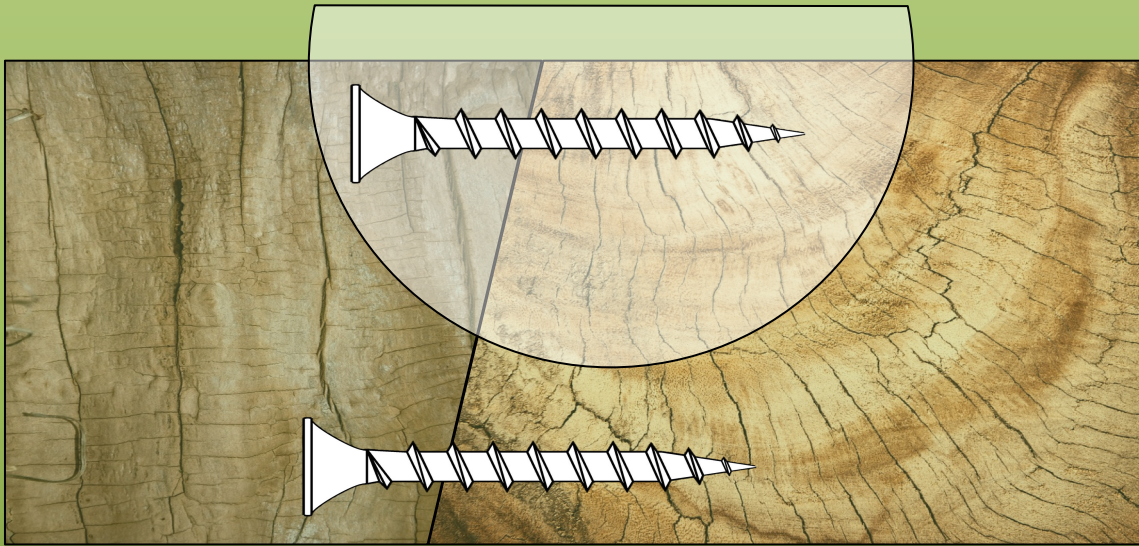
# ***FIRST CUT***



# ***RULE OF THIRDS***

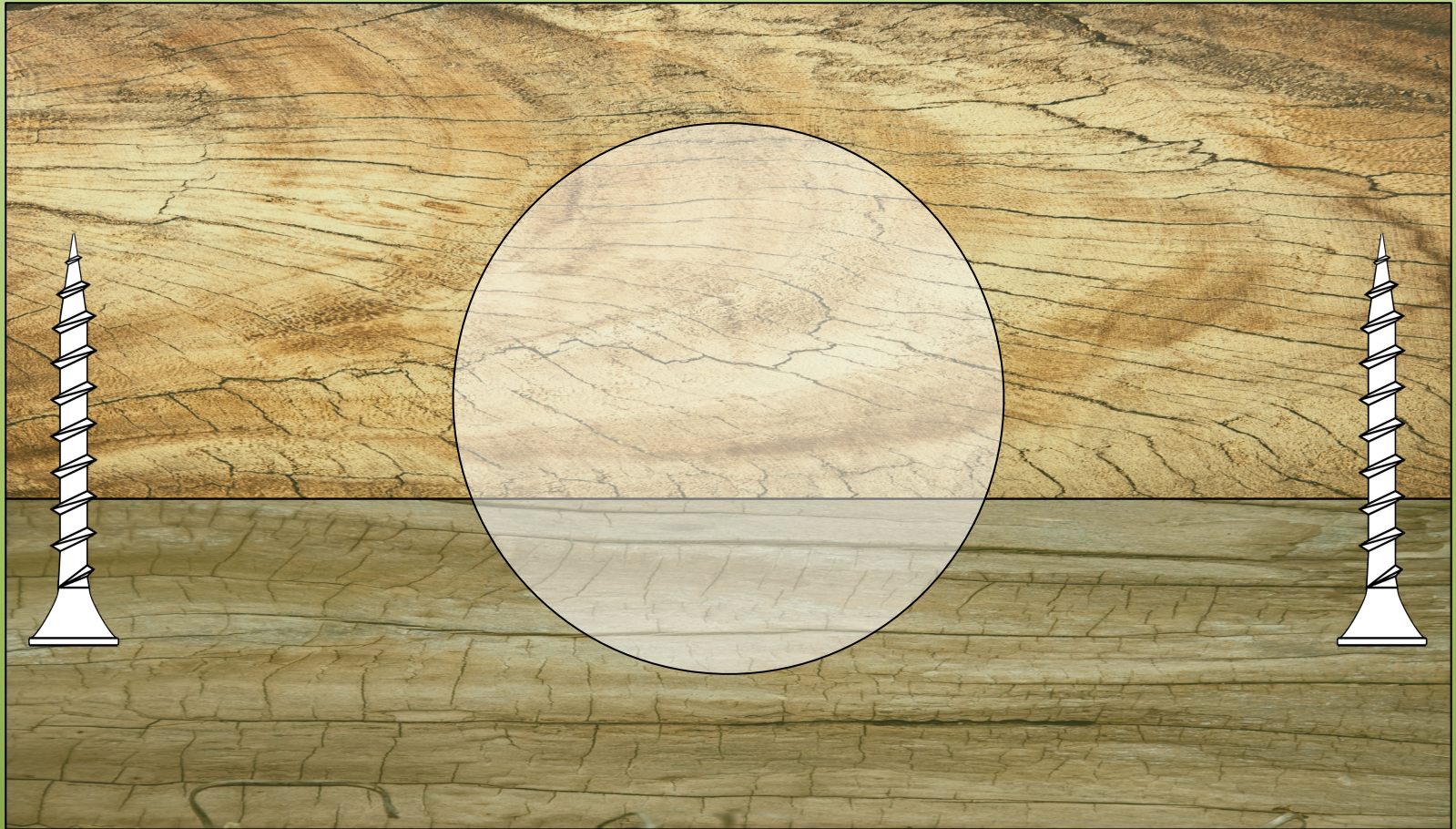


# ***MOUNTING SACRIFICIAL PACKING FIX TOGETHER***



***END ELEVATION***

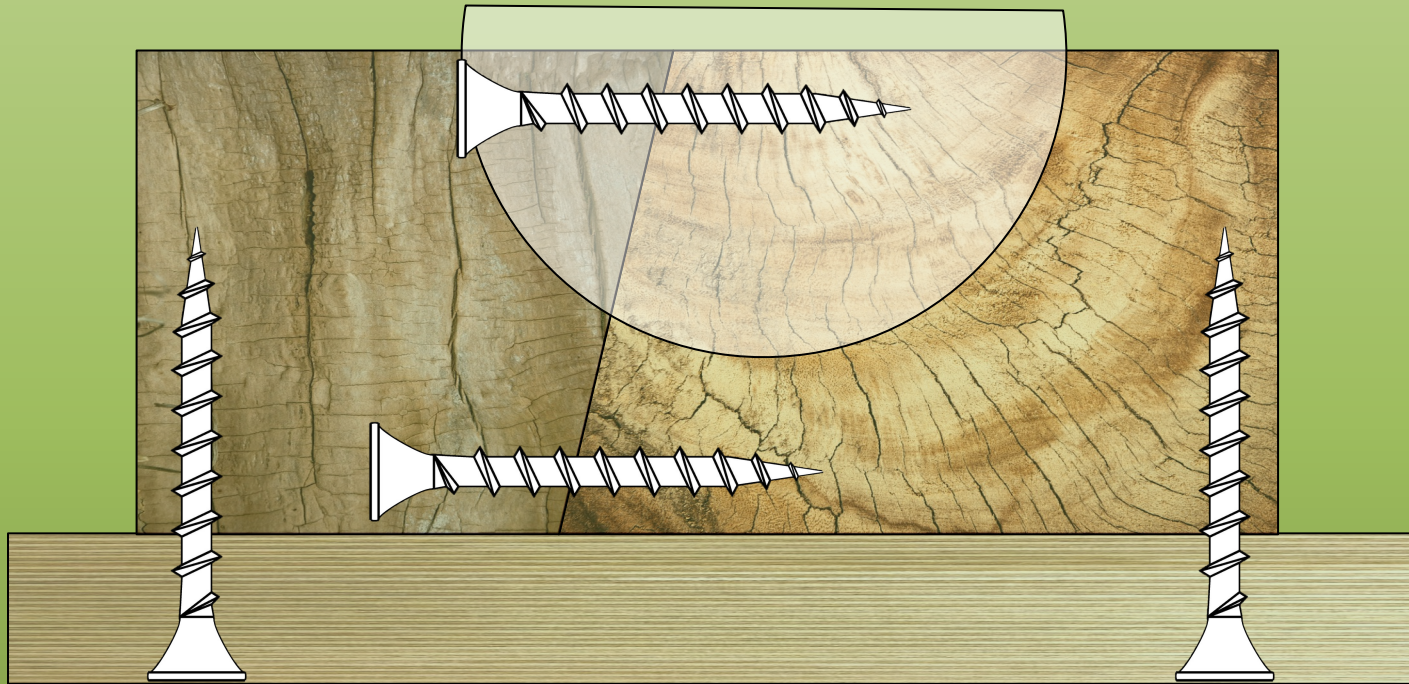




***PLAN VIEW***



# ***MOUNTING TO FACEPLATE***



***SACRIFICIAL FACE PLATE  
END ELEVATION***

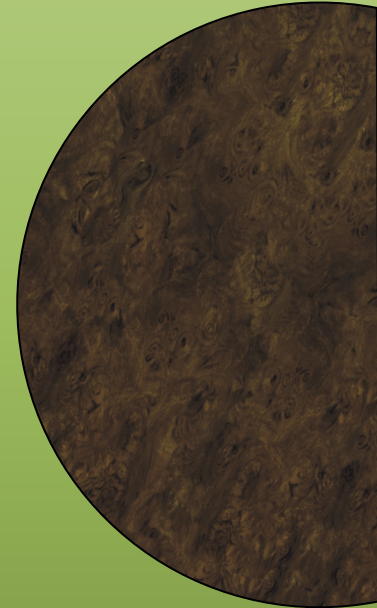
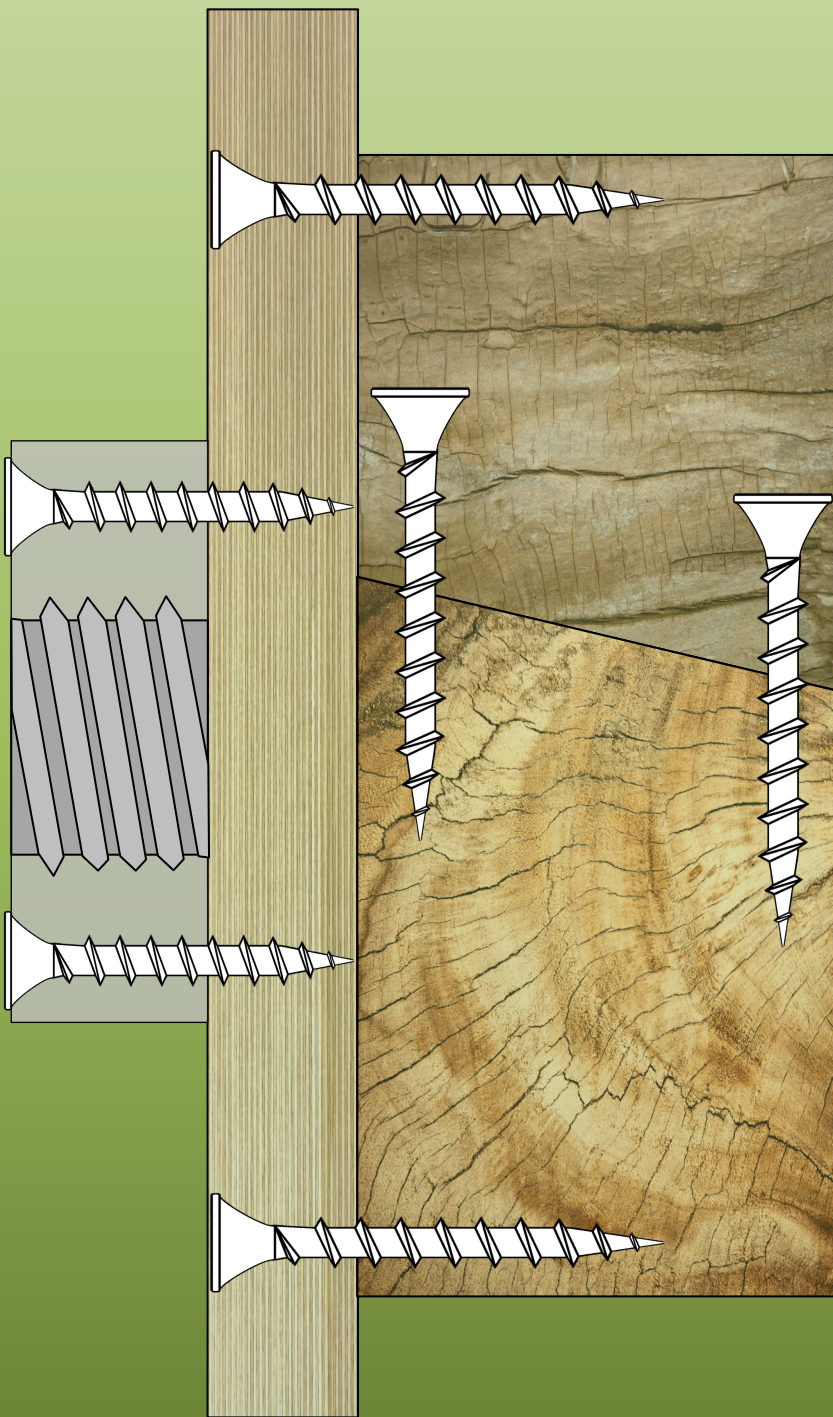
# ***MOUNTING TO FACEPLATE***



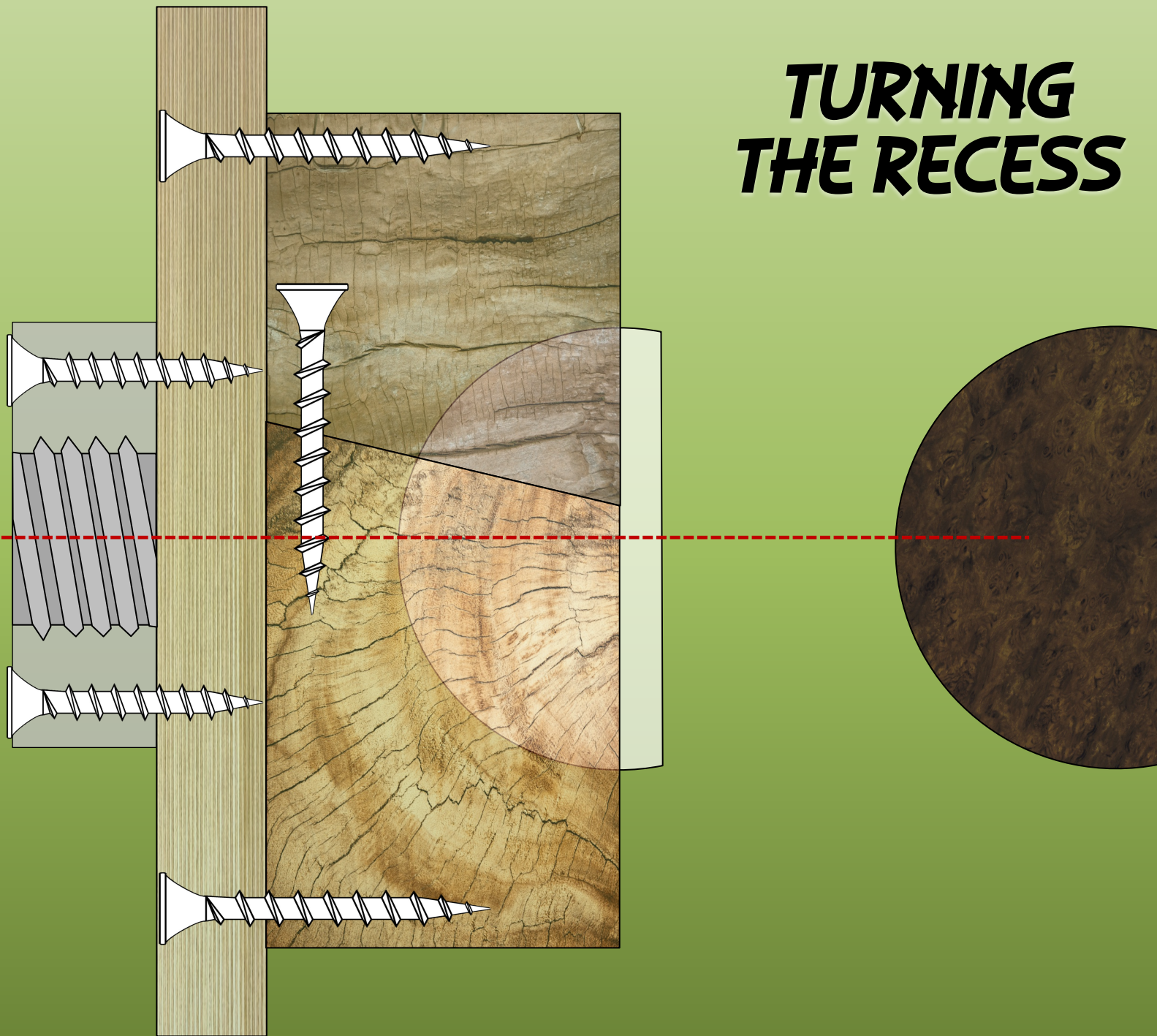
***SACRIFICIAL FACE PLATE  
SIDE ELEVATION***



# ***TURNING THE RECESS***

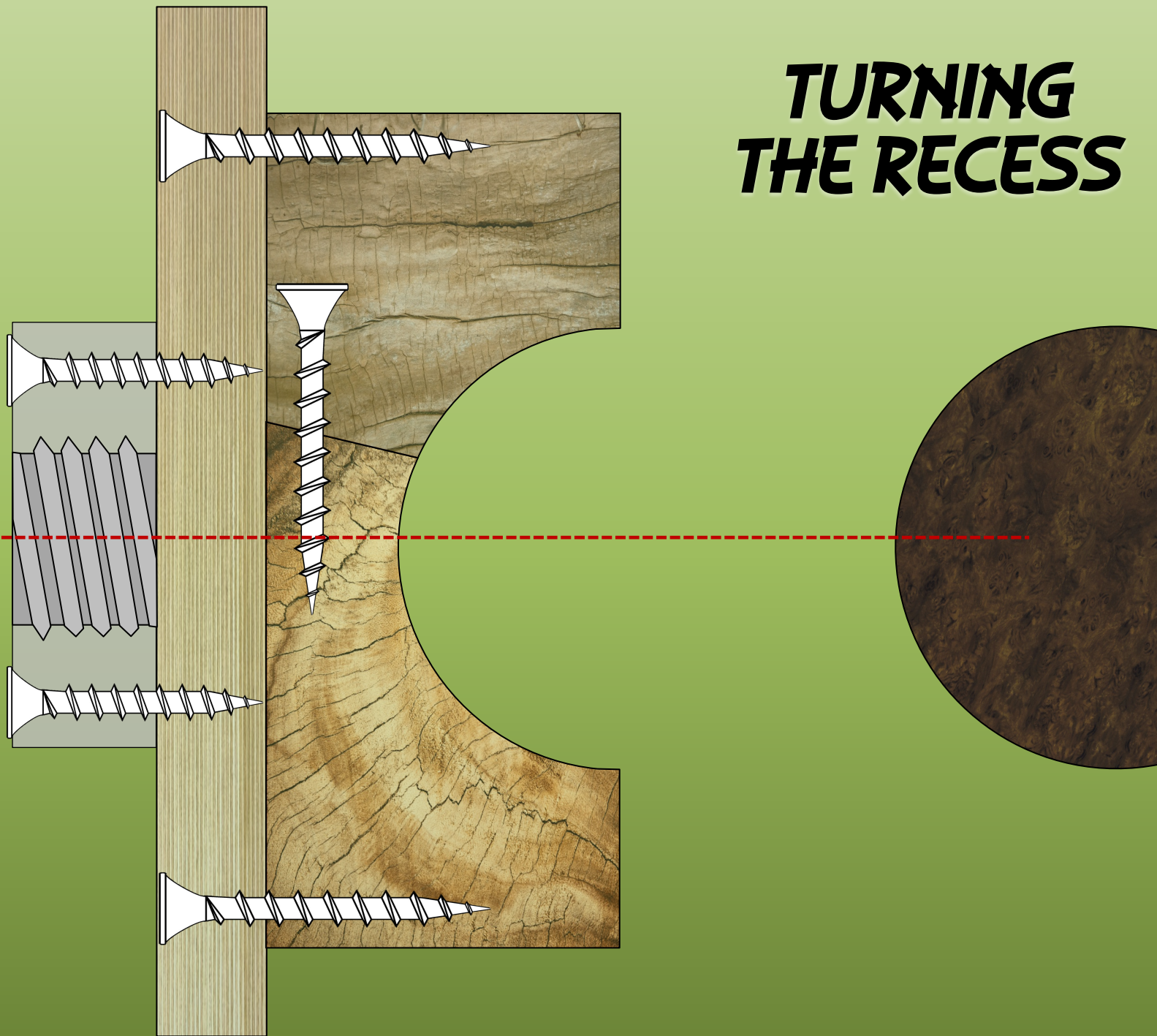


# ***TURNING THE RECESS***

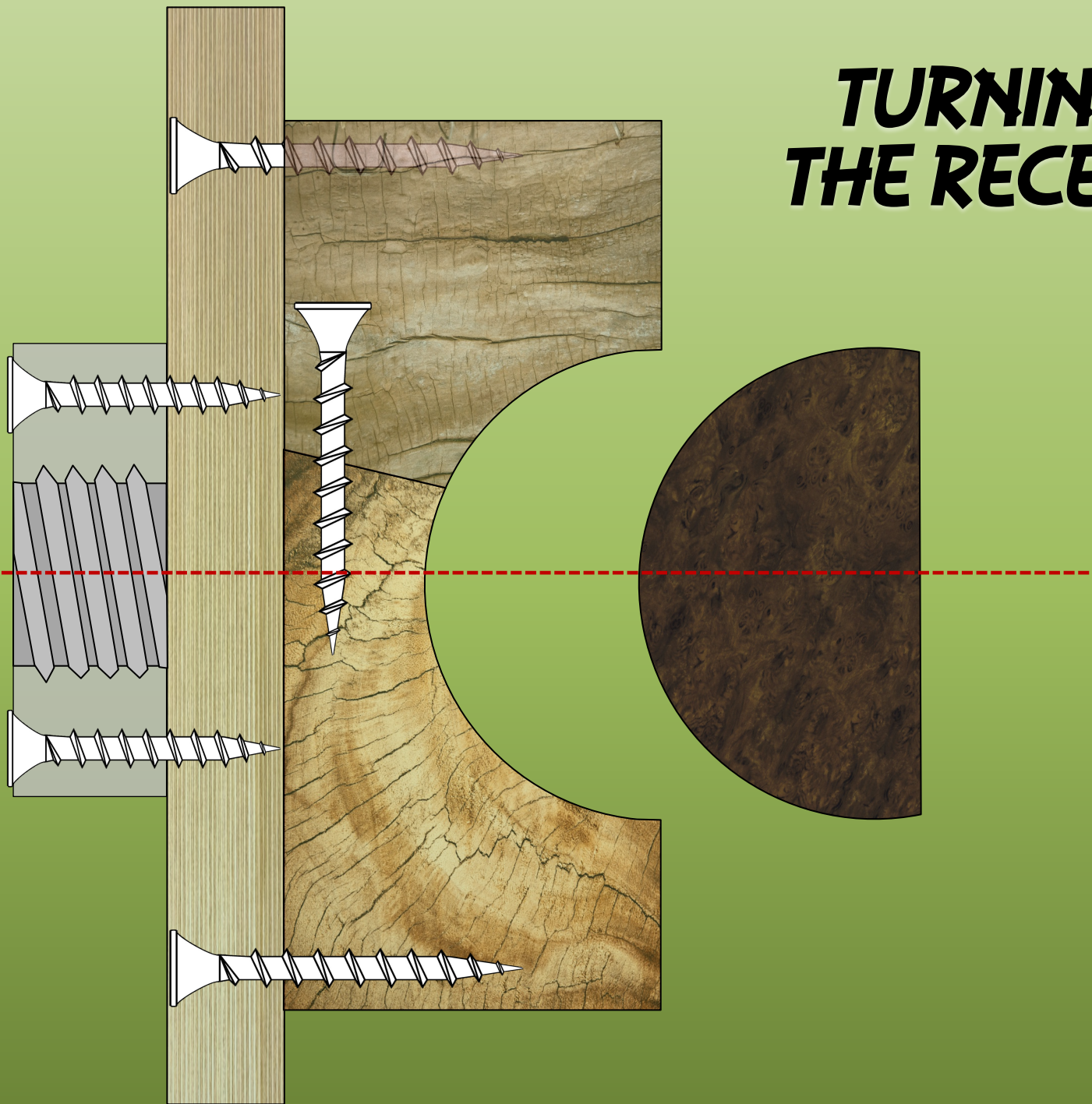




# ***TURNING THE RECESS***

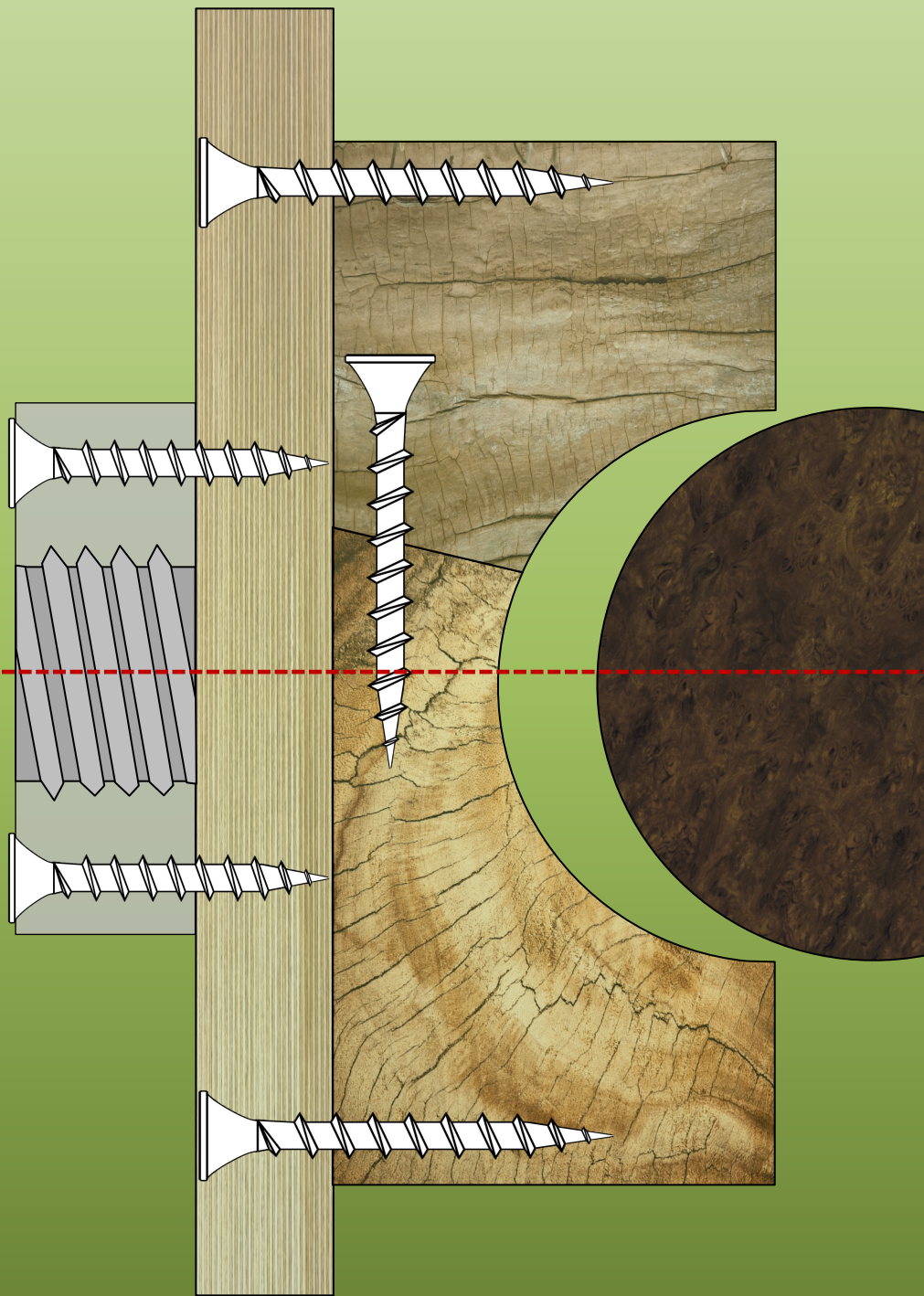


# ***TURNING THE RECESS***

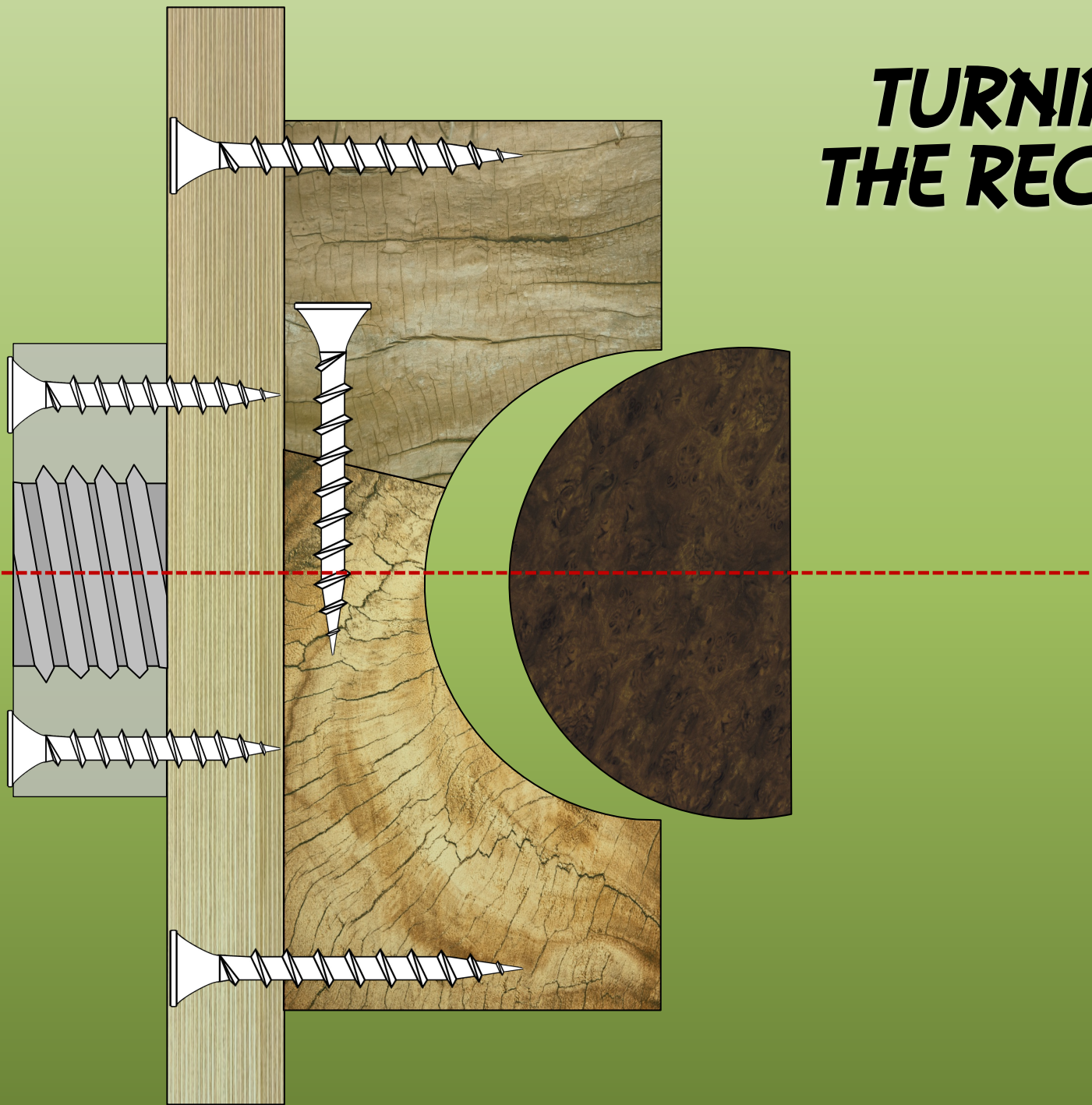




# ***TURNING THE RECESS***

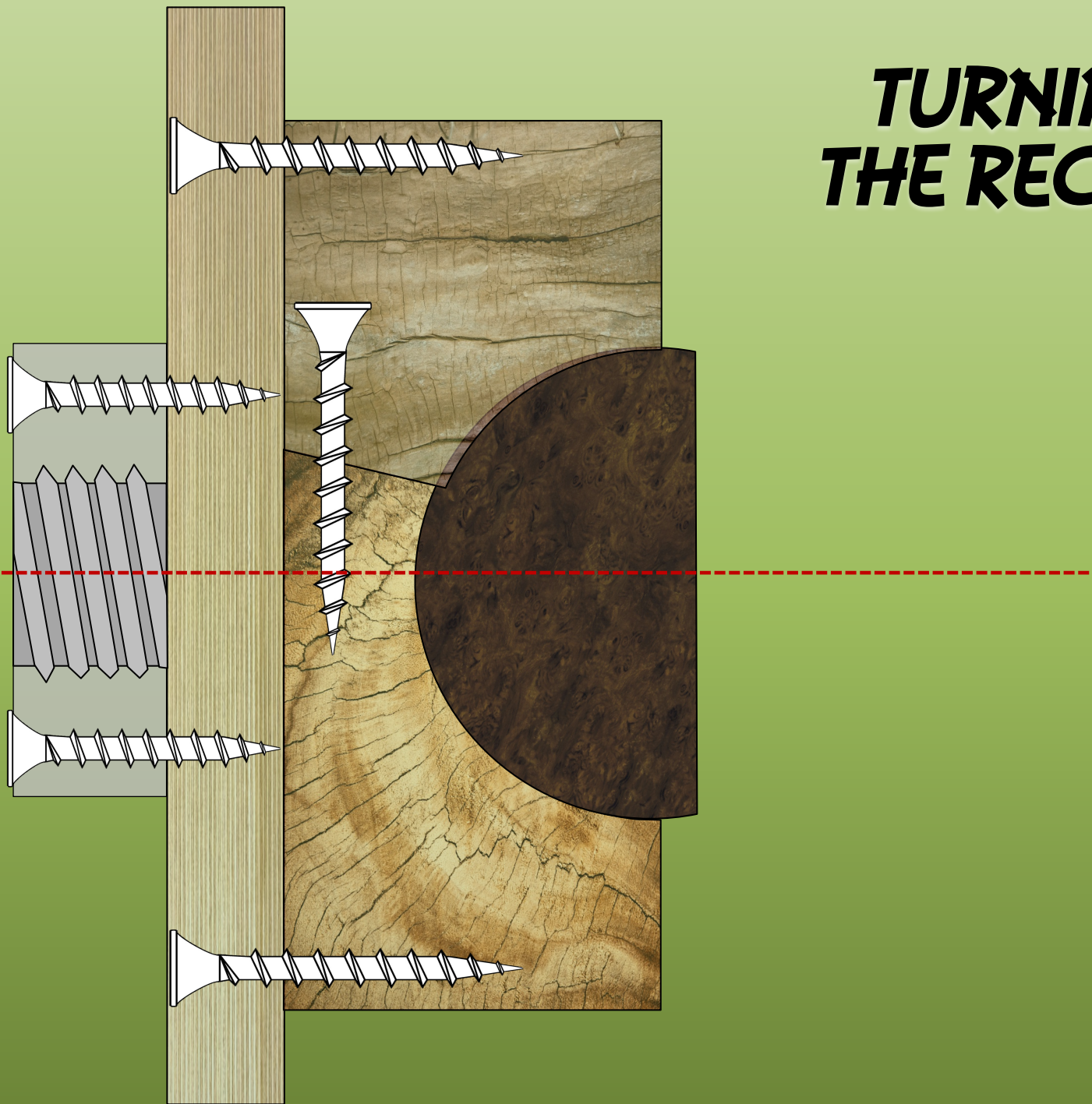


# ***TURNING THE RECESS***

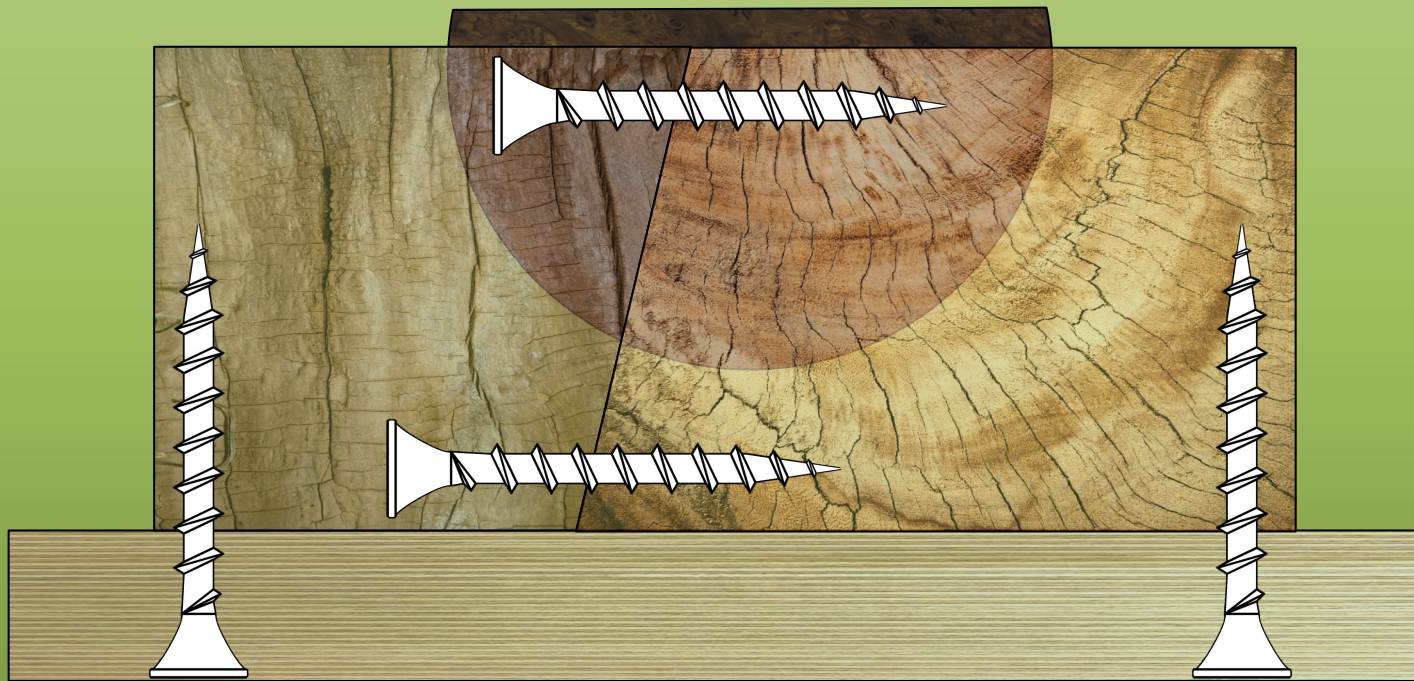




# ***TURNING THE RECESS***



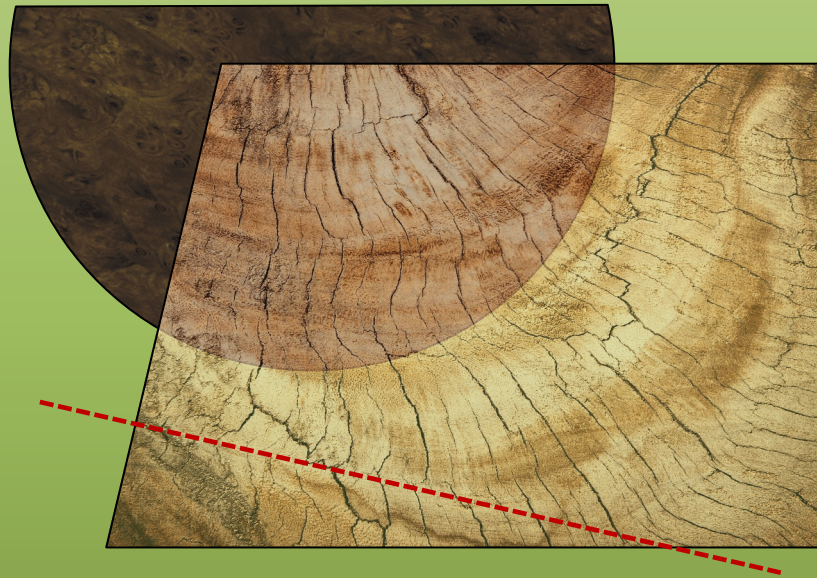
# ***REMOVING SACRIFICIAL WOOD***



***SACRIFICIAL FACE PLATE***

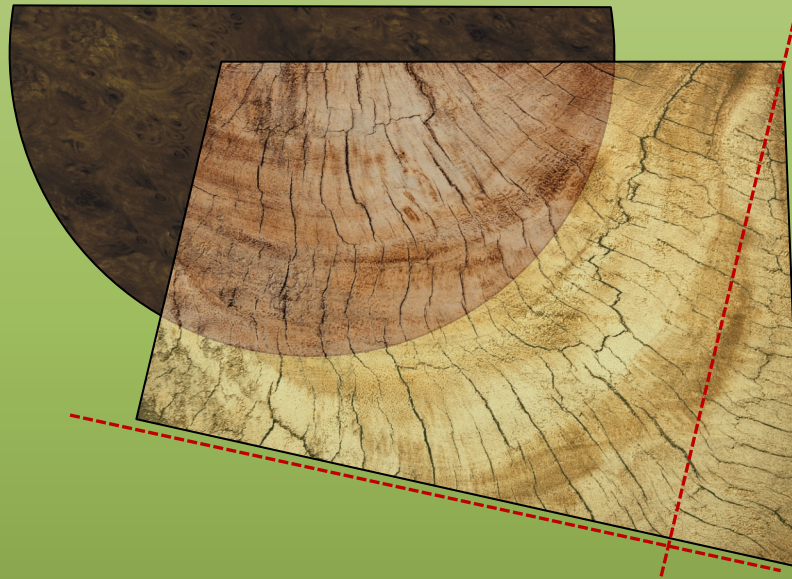


# ***FIRST CUT - BOTTOM***



***RIGHT ANGLE TO THE FRONT***

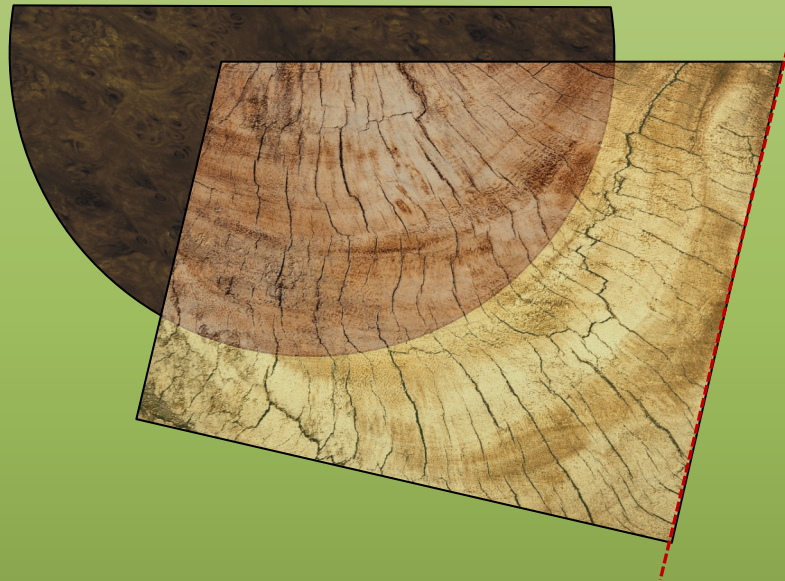
# ***SECOND CUT - BACK***



***PARALLEL TO THE FRONT***

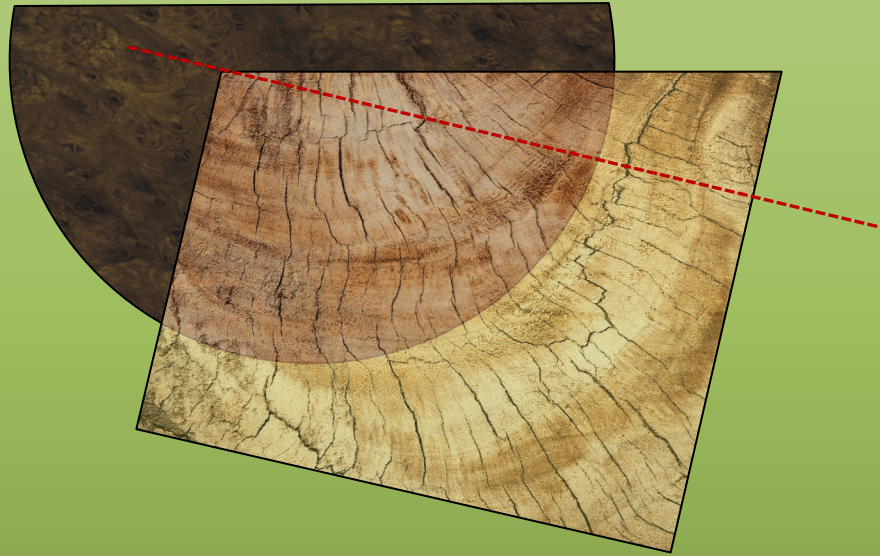


# ***SECOND CUT - BACK***



***PARALLEL TO THE FRONT***

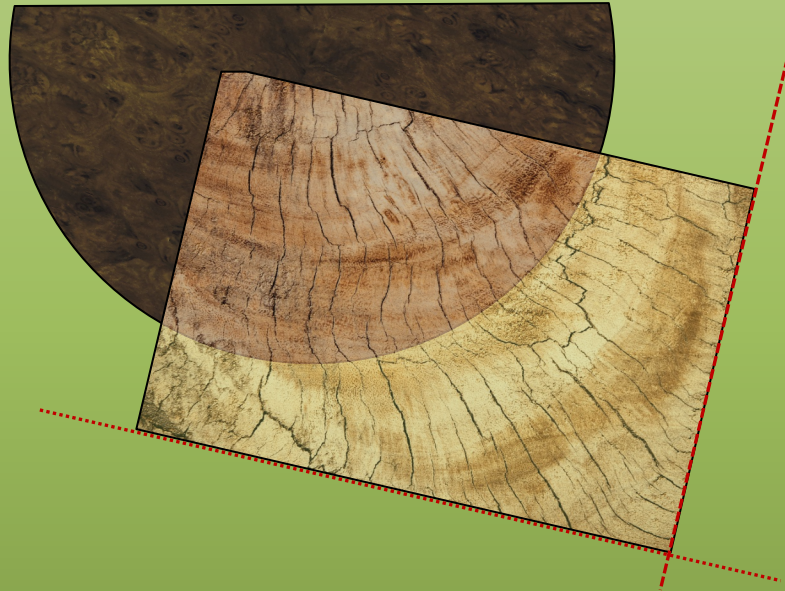
# ***THIRD CUT - TOP***



***PARALLEL TO THE FRONT***

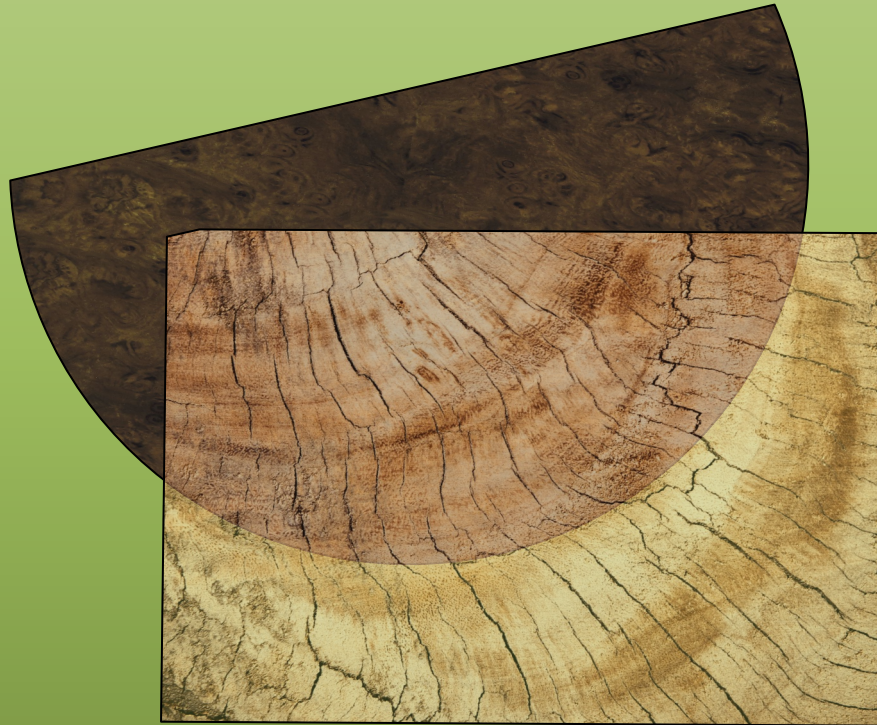


# ***THIRD CUT - TOP***



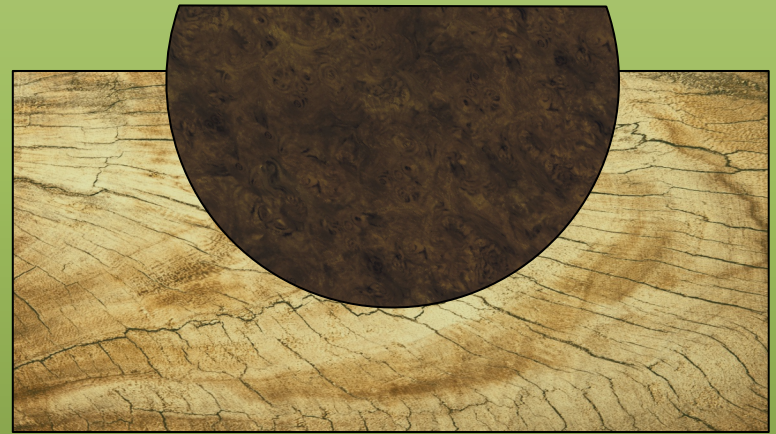
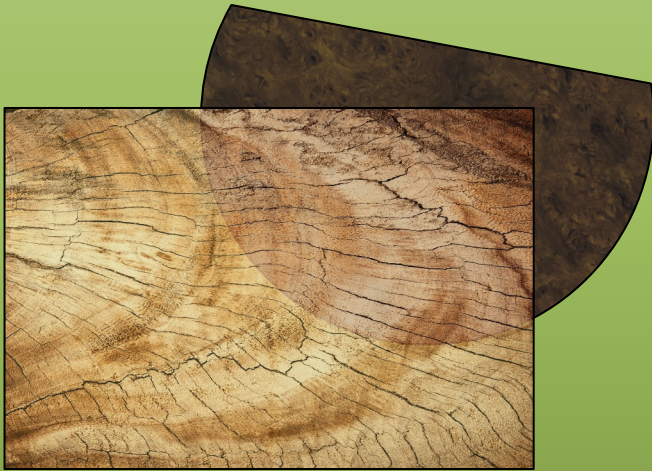
***PARALLEL TO THE FRONT***

***AND TILT TO COMPLETE***





# ***EMERGING BOWL***



# ***THE COMPLETED BOWL***