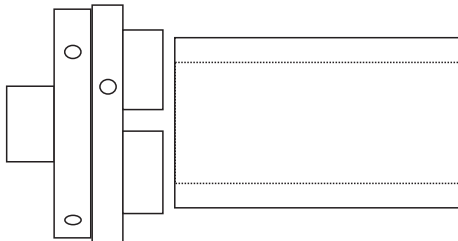
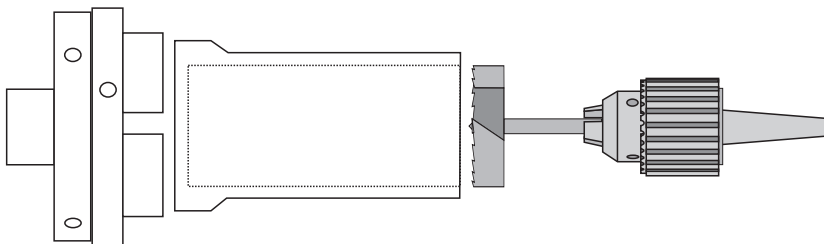


## Small Parts Cylinder

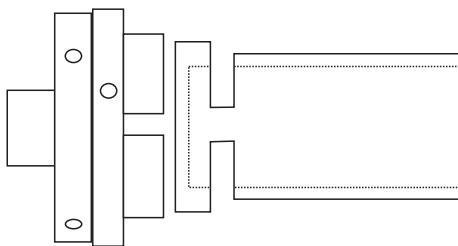
Generally, any toy or part of a toy which fits entirely in the 'small parts cylinder' will not meet the product safety standard. This is standard AS/NZS iso 8124.1:2002 - Part 1: *Safety aspects related to mechanical and physical properties* which is available for purchase from [www.standards.co.nz](http://www.standards.co.nz)



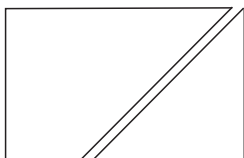
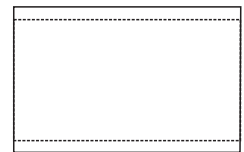
Outside of the Cylinder.  
Start with wood that is 45 x 45 x 75 mm mounted in a chuck.



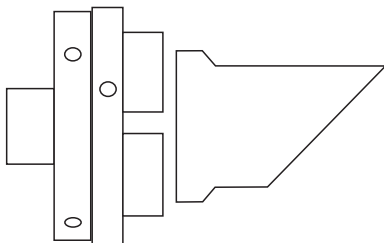
Drill with a 1 1/4" (31.7 mm) bit almost to the end of the wood. Turn the outside round and down to about 40 mm diameter. Sand all surfaces.



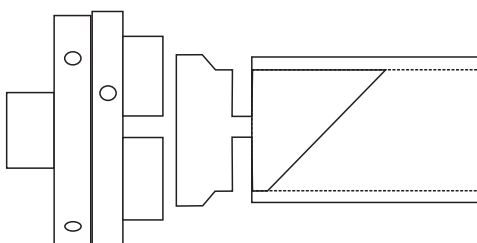
Part the wood off so that you have a tube that is 60 mm long.



The plug inside the cylinder.  
Start with wood that is 40 x 40 x 60 mm. While it is still square cut this at 45 degrees from one corner and discard the small part. Sand the sloping face of the larger part to a good finish.



Mount the wood in a chuck and turn it round and down to 31.7 mm (1 1/4") diameter. The tube part should now fit snugly on this wood.



Glue the tube to the sloping block so that the tube extends 25.4 mm beyond the longest end of the sloping block. Part the sloping block off at the chuck end of the tube.

