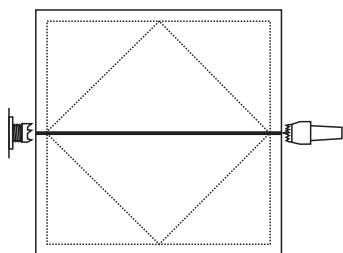
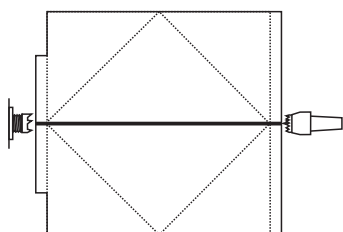


## Double Cone Streptohedron

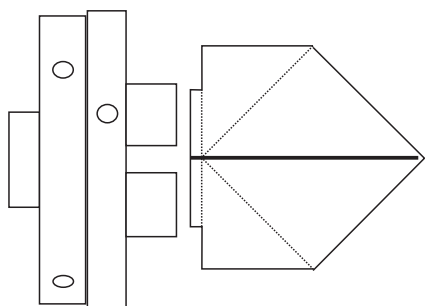
From David Springett in his books Woodturning Wizardry and Woodturning Full Circle.



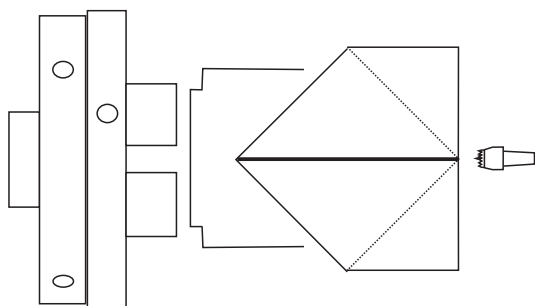
Start with a block that is two halves of a 65 mm cube cut and rejoined with a paper or double-sided tape joint at the centre. Mount this accurately between centres with the joint perfectly on centre and in line with the lathe drive.



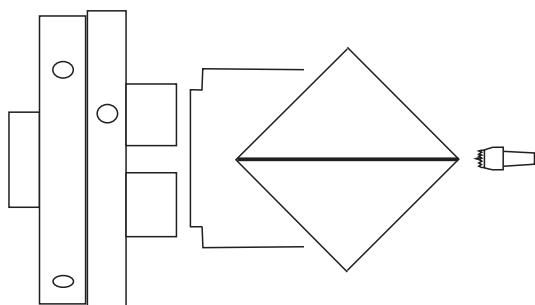
Turn the wood to be round. Cut a spigot for a 50 mm or 30 mm chuck on one end of the wood.



Mount the wood in a chuck. Cut it to be 60 mm diameter. Dress the tailstock end of the wood to be flat. Put a pencil dot at the centre. Mark a line around the wood 30 mm from the tailstock end. Make a sloping cut from the 30 mm mark to the centre on the end. Sand this surface.



You now need to turn the wood around to cut the opposite point. Make a jam chuck and use hot melt glue to hold the wood. Bring up the tailstock for added security. Mark a line around the wood 30 mm towards the tailstock from the first 30 mm line you put on the wood. At this new 30 mm line dress the tailstock end of the wood to be flat. Put a pencil dot at the centre.



Make a sloping cut from the original 30 mm mark to the centre on the end. Sand this surface.

Remove the wood from the lathe. Split the joint and ensure the two faces of the wood are clean and smooth. Rotate one of the two parts through 90 degrees and glue the wood together. Sand and finish.

