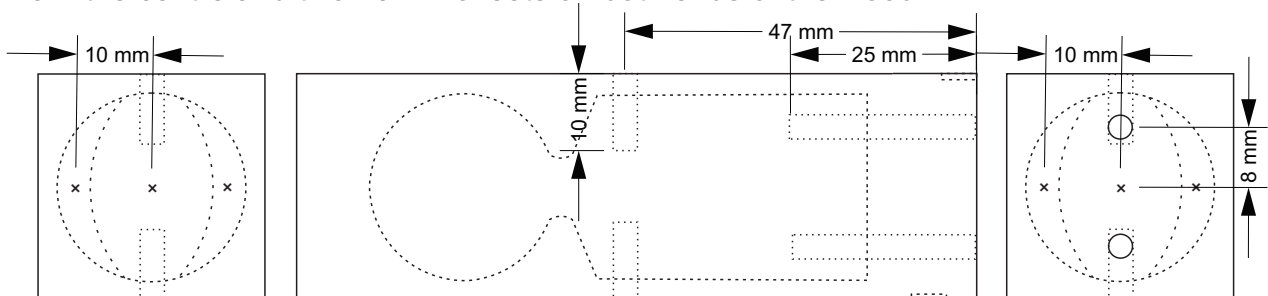


BOB'S DOLL

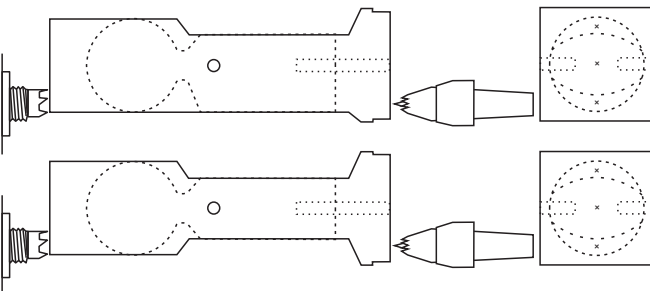
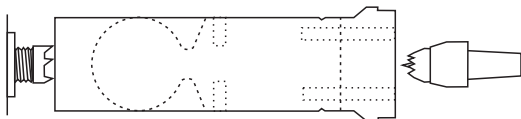
This doll is not ready for presentation when first made. Clothes are needed.

Start with wood that is 30 x 30 x 90mm long. To hold this wood you will need a chuck with 30mm jaws - or start with larger wood. While the wood is square drill four holes for arms and legs as in the plan and of a diameter to suit the 50mm long pieces of insulated electrical wire you have for the legs and arms.

Mark the centre and two 10mm offsets on both ends of the wood.

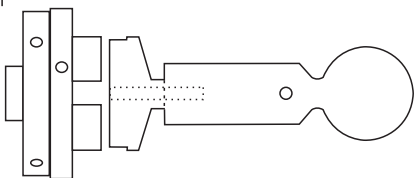


Mount the wood between centres. Cut a spigot for a 30mm chuck at the tailstock end. Turn the rest of the wood to round. Cut a notch 20mm from the foot end where the waist of the doll will be. Draw a line round the wood 55mm from the foot end where the neck will be. Draw a longitudinal line 1mm each side of each arm hole as a guide to the off-centre cut depth.

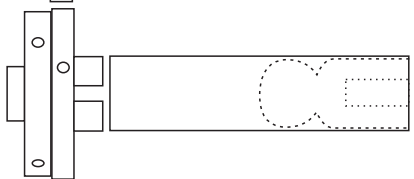


Remount the wood on a pair of the offsets at head and tail. Turn the body only down to the lines drawn along the body and the size shown in the end-of-wood drawing.

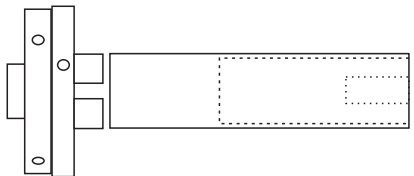
Remount the wood on the other pair of offsets at head and tail. Turn the body only down to the lines drawn along the body and the size in the end-of-wood drawing.



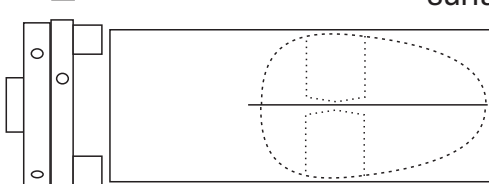
Remount the wood in a 30mm chuck. Turn the head and neck to round. Start the parting off cut. Sand all surfaces. Complete the parting off. Paint on a face and hair. When the hands and feet are complete, assemble the doll.



Hands. Make two. For each one start with wood 10 x 10 x 40mm held in a 25mm chuck. Drill a hole in the end 8mm deep and of a diameter to suit the insulated electrical wire you have. Turn the wood round to 9mm diameter. Turn the curve of the hand and total length to 20mm. Sand and part off. Hand sand the parting cut.



Legs. Make two. For each one start with wood 10 x 10 x 40mm held in a 25mm chuck. Drill a hole in the end 8mm deep and of a diameter to suit the wire you have. Turn the wood round to 8mm diameter and 25mm long. Sand this surface and part it off to be 25mm long.



Boots. This makes a pair. Start with wood 20 x 20 x 50. Drill two 8mm holes almost to the centre and 20mm back from the end. Make a central bandsaw cut 32mm into the wood. Mount this in a small chuck. Turn the boot to 17mm dia and then to shape and 30mm long. Sand and part off.