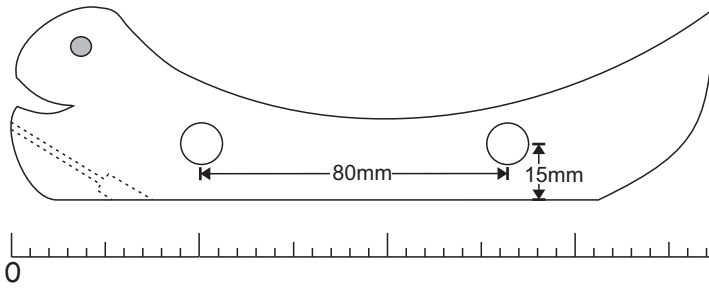


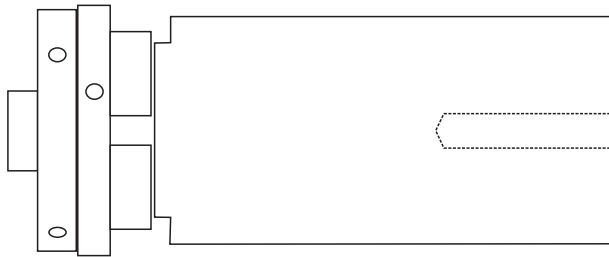
Sally the Snail

A Bryden Thorpe Toy

This is a pull-along toy which can be painted in bright colours, or otherwise decorated. A painted cylinder rests on the toy's four wheels and rotates as the toy is pulled along.

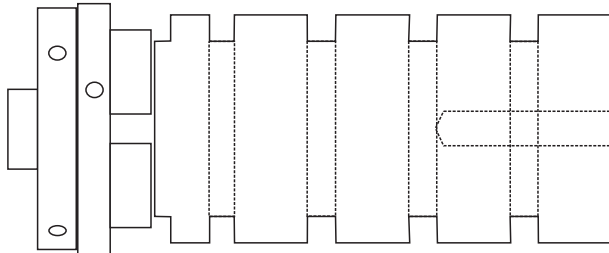


The body of the toy is 175mm long and cut from 20mm thick wood. Drill 11mm holes for the wheel axles and an angled hole for the string. For tidiness make the lower end of the string hole larger to accommodate a knot at the end of the string. Sand all surfaces and apply a finish or colour of your choice. Paint on or glue on eyes.

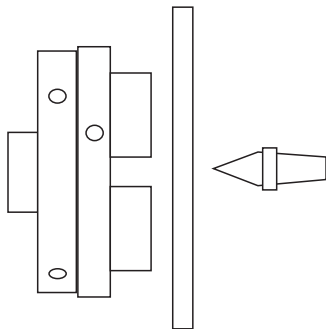


For the wheels start with wood that is 70 x 70 x 120mm long. Mount this in a chuck and turn it to 60mm diameter. Sand this surface and the end of the wood.

Drill a 10mm hole down the centre to take the axle.

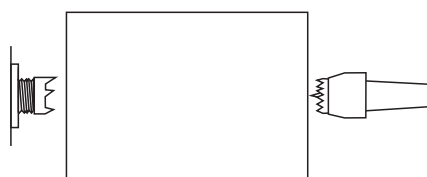


Part off the first 20mm thick wheel. Hand sand the back of the wheel. Sand the end of the wood on the lathe. Drill the centre hole further if needed. Repeat this process until four wheels are completed. Cut lengths of 10mm dowel and fit the wheels to the body.



Make two disks for the ends of the drum that rides on the back of the snail. Use thin hardboard or plywood. Hold it firmly against a chuck or a block of wood held in a chuck. Hold it in place with a pointed live centre. This point mark will be used as the mark for attaching the disk to the drum. Turn each disk to 85mm diameter. Sand them and paint them the colours of your choice.

The drum length should be 65mm but measure the width of the pairs of wheels now that they are attached to the body. The drum length should be that wheel width plus 3mm.



Cut a block of wood to 60 x 60 x 65mm long. Ensure the ends are perfectly square. Mount it on the lathe between centres and turn it to be 45 to 55mm diameter. Nail and glue the disks to the ends of this drum.

