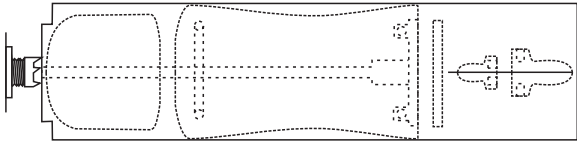
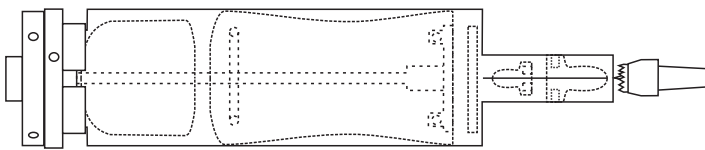


A Doll

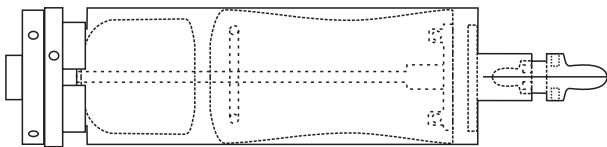
Start with a piece of wood 45 x 45 x 190mm. Select the string you will use for the arms and legs and determine what size holes are needed to allow the string to slide through on the body and are best for gluing the string into for the feet and hands.



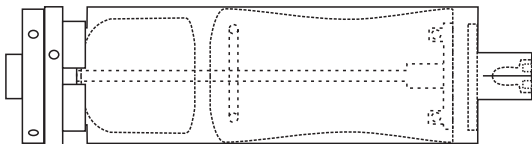
Make a saw cut, using a very fine saw, at the exact centre of one side, 51mm into the length of the wood. Mount the wood between centres. At the tailstock end use a Steb or flat-faced live centre. Make the wood round and create a chuck bite for 30mm jaws on one end. Wood this size can be held square in a 50mm chuck if you don't have a 30mm chuck.



Mount the wood in a chuck and bring the tailstock up. Turn the end 53mm down to 15mm dia. Mark the wood with 2mm to be taken off the end to remove the tailstock marks and 20mm for the boots. Drill a hole into the uppermost part of each boot to glue the leg string into later.

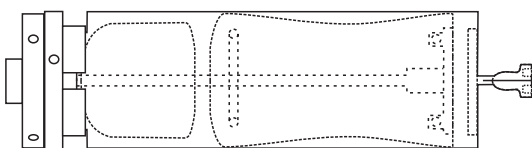


Take the tailstock away. Turn the boot to shape and start the parting-off cut. Sand all this surface and make the boots the colour of your choice.

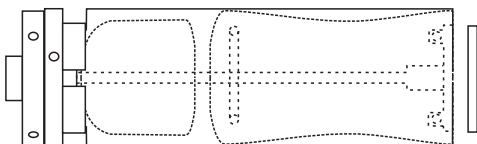


Part the boots off. Sand and finish the parted surface on the boots. Set them aside.

Drill holes into the end of the hands to glue the arm strings into later.

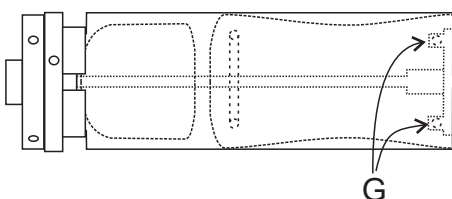


Turn the hands to be 18mm long a little smaller than the diameter for the boots but ensuring that there is sufficient wood to hold the glued-in arms. Turn the hands to shape and almost parted off. Sand.



Part the hands off. Sand the parted ends. Set them aside.

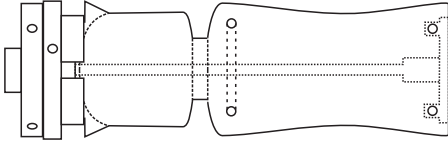
Sand the end of the wood and then cut a 35mm x 3mm disc off the end of the wood.



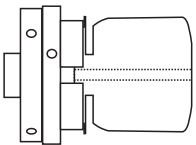
To hide the leg string (and knot at the end of the body string) cut a recess in the base to fit the previously made disc. Drill a hole at the centre through the length of the wood. This must be large enough for the body string to move freely in. Drill a wider hole into the base for the knot on the end of the body string to be pushed into. Then cut a groove inside the base large enough for the leg string to slide around in. Labelled G in diagram.

A Doll p2

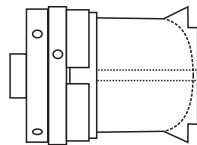
Turn the body and as much as possible of the head to the finished shape, including down into the parting cut between them. Look at the grain of the wood and select which side is to be the front of the doll. Drill a hole for the arm string to slide through. This must be towards the front of the doll. Drill two holes for the leg string to slide through. Drill these holes just into the groove made earlier. Sand all the outside area. Add decoration to the body. Part the body off.



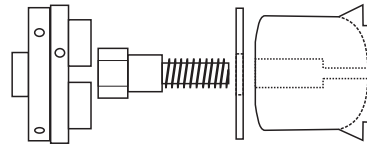
There are now three options for finishing the head:



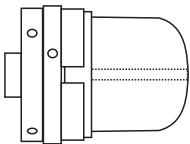
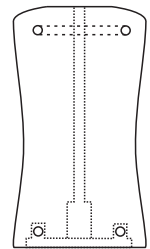
Part it off as close as possible to the chuck. Then hand sand the parted surface.



Reverse it into a chuck with some packing to avoid chuck marks on the wood.



Before removing it from the original chuck drill a hole to take a screw chuck. Reverse the head and mount it on a screw chuck. A flat packer will be needed.



Sand and finish. Check the grain of the wood to determine which side is best to be the front. Apply decoration of your choice.

Assemble the doll. Thread a string from the top of the head to the bottom of the body. Tie a knot in the bottom end and pull it firmly back into the body. Pull it as tight as possible at the top of the head and tie a knot there.

Thread a string through the two leg holes. Put a boot on one end and then decide on the string length before cutting and putting the other boot on. Glue in the covering disc.

Thread a string through the arm hole. Glue a hand to one end and then decide on the string length before cutting and putting the other hand on.

