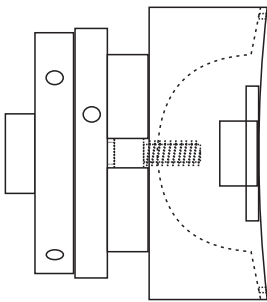


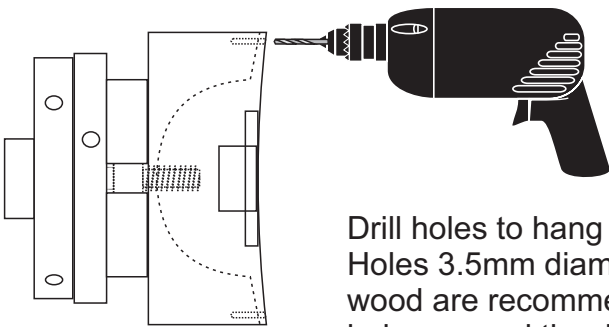
Jewellery Stand

Designed and demonstrated by Emma James-Ries

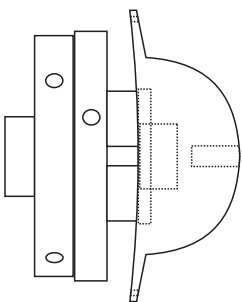
This stand is a slim feminine form with a hat to hang jewellery from and a dish at the feet to place jewellery in. It may be coloured or decorated in many ways, or left as plain wood. Three pieces of wood are needed: For the top (hat) 50mm thick and 120 diameter with the grain along the longer dimension; for the stem 40mm square and 200 long; for the base (dish) 50mm thick and 180 diameter with the grain along the longer dimension



Mount the top block on a screw chuck. Turn it round to about 115mm diameter. Cut the underside to a shallow concave. There are now options to achieve a fit between this top and the stem of the jewellery stand and also to remount this block to turn the top of the hat. If you have a chuck with pin jaws make a 26mm diameter hole 15mm deep. If you will remount on 50mm jaws cut a 54mm wide cavity 5mm deep to expand the chuck jaws into. Within that drill a hole to suit the spigot size you plan for the top of the stem. Sand this side of the work.

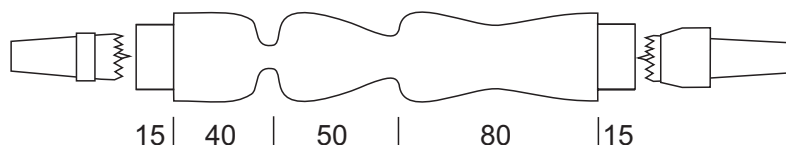


Drill holes to hang earrings around the circumference of the top. Holes 3.5mm diameter drilled 2 to 3mm in from the edge of the wood are recommended. Use the lathe index to evenly space 24 holes around the rim.

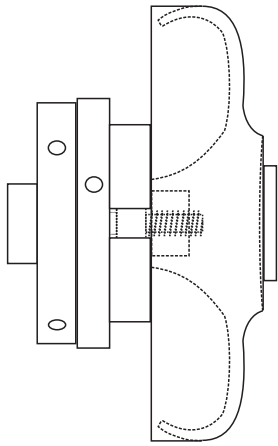


Turn the wood around and mount it on the chuck of your choice. Drill the screw chuck hole again to tidy it up with a slightly larger drill (probably 9mm). This hole will be used for a knob or a finial. Turn the top and brim of the hat to shape. Sand and finish.

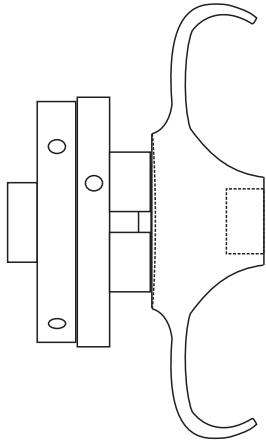
Mount the wood for the stem between centres. Round it down to about 35 mm diameter. Mark the spigots at each end and turn them to the desired size. Mark the significant points for the body shape. If you are using wood that is longer or shorter than the 200mm shown here, try to retain similar body shape proportions: 24; 29; 47%. Turn the body shape and ensure that the neck diameter is less than the waist diameter. Sand and finish.



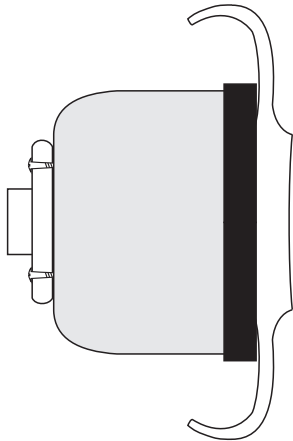
Jewellery Stand P2



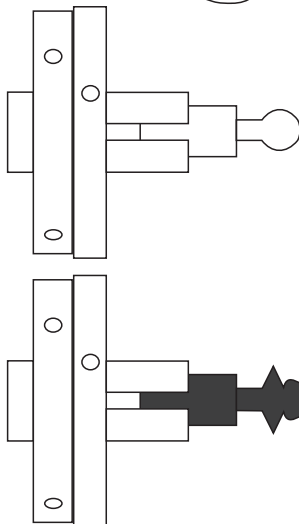
Mount the base wood on a screw chuck. Turn it round and to about 170mm diameter. Turn a spigot to mount the work on a 50mm chuck. Turn the underside of the base. The foot of the finished work can be wider than the commonly expected one third of the diameter to provide better support for the tall stem and hat. Sand this area to almost finished.



Turn the work over and mount it by the spigot in a chuck. Cut or drill a recess at the centre to fit the spigot previously turned on the stem. Ensure that the stem fits and mark the diameter of the bottom of the stem on the surface of the base. Hollow the base. Make the central plinth the exact size of the stem end. The slightly undercut outer edges make it easier to take out small jewellery items. Sand and finish all of this side.



Remove the work from the chuck and remount it using a vacuum cup chuck, Cole Jaws, Longworth chuck, jam chuck, or other holding device. Remove the chuck spigot from the base and turn a slight concave in the bottom. Sand and finish the entire underside.



Mount a short length of 10mm square wood in a small-jawed chuck. You can now choose to make a small knob or a longer finial for the top of the top part of the jewellery stand. Turn it so that it has a 9mm spigot to fit into the top. If you choose to make a finial then make it reasonably robust so that rings can be put on it without fear of breakage.

