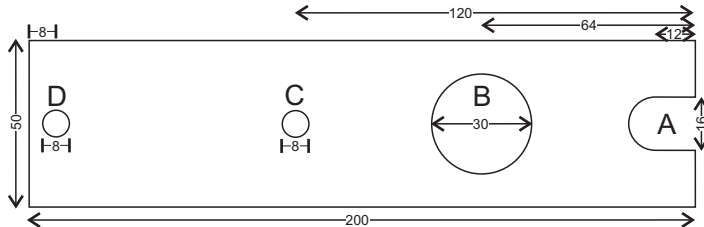




Tailstock Handle

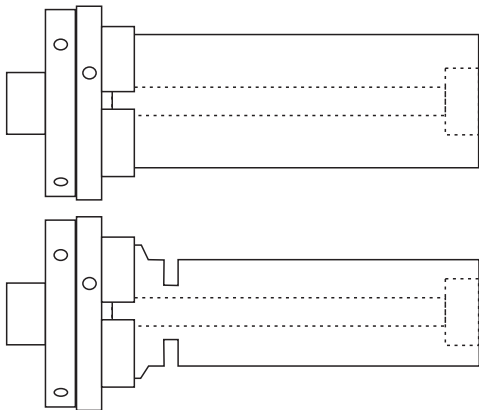
To use Forstner bits, and other large drills, on a lathe the work is made easier by extension of the tailstock handwheel. This is extension in two directions: the radius of the turning handle is enlarged; and the handle grip is enlarged. This allows the handle to be turned continuously and smoothly thus providing a constant movement of the drill into the wood. This plan is for most of the Nova range of lathes where the tailstock handwheel is about 126 mm diameter. It can be modified for other lathes.



This extension plate may be made from 3 mm steel or aluminium or slightly thicker wood.

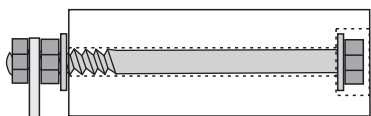
The four holes shown are on the centre line of the extension plate at the distances shown. Hole A is then cut to the shape shown - this space is to fit over the base of the existing handle on the handwheel. Hole B is not needed for lathes that have self-ejecting tailstocks. Hole C is for an 8 mm bolt to be threaded into, or pass through, the existing tailstock handwheel. Hole D is for the end of the 8mm bolt in the new handle.

For the new handle start with a piece of wood 110 x 40 x 40 mm.

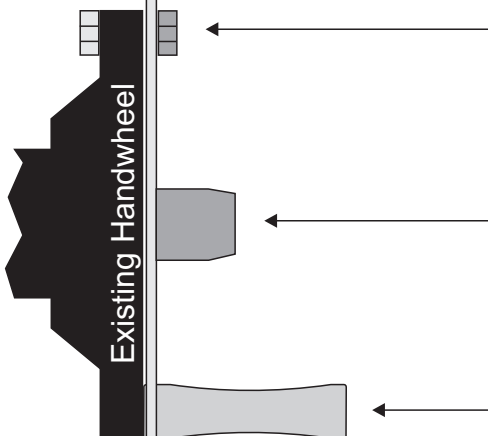


Hold this by one end in a chuck and drill a 20 mm hole 10 mm into the end. Or a larger diameter to accommodate a socket to tighten the bolt later. The head of the bolt should be inset in the handle so that it does not rub on the users hand. Drill an 8.5 mm hole right through the length of the wood.

Turn the handle round and down to about 32 mm diameter. Include shaping if desired. Start the parting-off cut to make the handle 90 mm long. Sand to a medium grit.



Fit the bolt into the turned handle. Use a washer against the wood at both ends. Adjust the nut so that there is a little slack allowing the wood to rotate freely on the bolt. A little CA glue between this nut and bolt can be helpful. Insert the bolt into the extension plate and tighten the outer nut firmly while holding the bolt with a socket on the other end or a thin spanner on the inner nut.



The 8 mm bolt at the new handle end of the extension plate may go into a threaded hole in the tailstock handwheel or go through with a nut on the other end.

On lathes which do not have self-ejecting tailstocks the end of the quill will extend through the extension plate.

This end of the extension plate fits around the old handle.