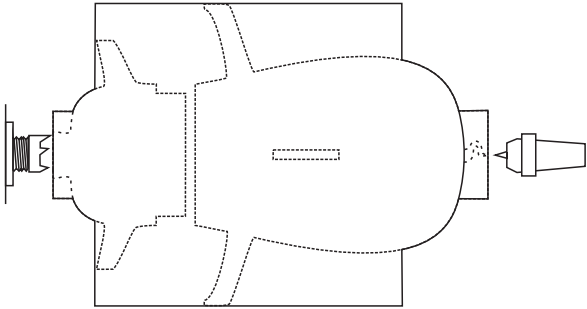


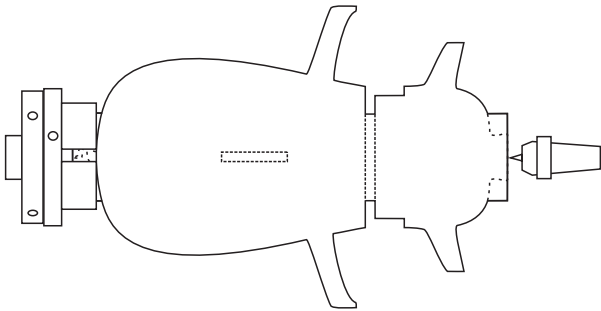
A PIGGY BANK

Modified from the piggy seen
at Echo Lake in 2015

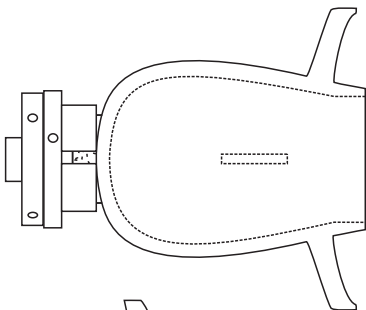
This project is to make a functional money box of reasonable size. The plan calls for the head to be connected to the body with a long spigot - a threaded joint will be better.



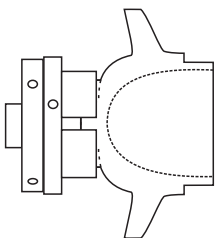
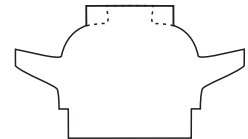
Start with a block that is 155mm long and 110mm square (or these proportions). Mount this between centres, turn it round and turn longish spigots on both ends. These are intended for deep chucks to hold the wood better for hollowing. Turn, at least, the areas close to these spigots to their finished lines.



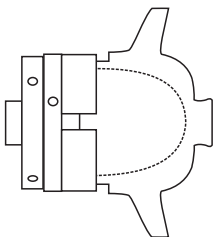
Mount the work in a chuck by the tail end first as this is the longest part. Bring up the tailstock for accuracy and security. Turn the outside to the finished shape and sand as much as possible. The legs and ears remain as a ring of wood around the main block at this stage. Part the head from the body. Set the head aside.



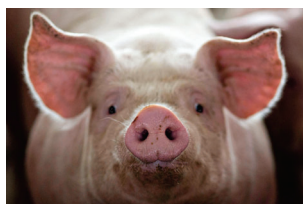
Hollow the body just enough to cut the straight sides to fit the head. Then hollow, sand and finish all of the inside. Study the grain of the wood and choose where the legs will be. Carve away the ring of wood to leave only the legs. Cut, sand and finish the coin slot. Take it off the lathe and carve away the spigot to leave just the piggy tail.



Mount the head part in a chuck. Hollow, sand and finish the inside.



Re-mount the head by the neck end in a larger chuck or on a jam chuck. Turn the nose down to the finished diameter. Carve nostrils. Carve away most of the ring of wood that will leave just the ears. Carve the front and back of each ear to shape. Sand and finish the nose and ears.





WOODTURNERS

SOUTH AUCKLAND
WOODTURNERS GUILD INC

TURNING TOMORROW'S TREASURES

