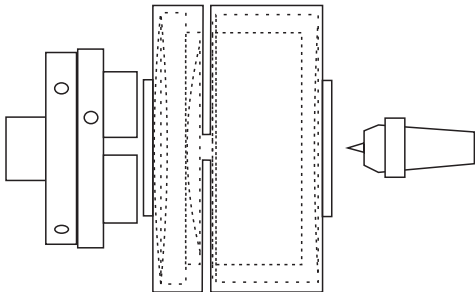


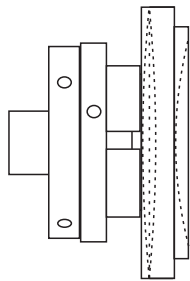
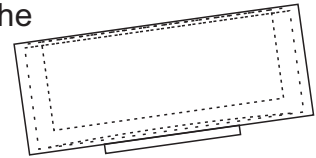
SIMPLE BOX

This is a box without any fancy shapes but it may carry the decorations of your choice. You can make it whatever size you wish and with the grain direction either way.



Mount the chosen wood between centres. Round it off and make a chuck bite spigot on both top and bottom. Mount this in a chuck by the side planned to be the top of the box.

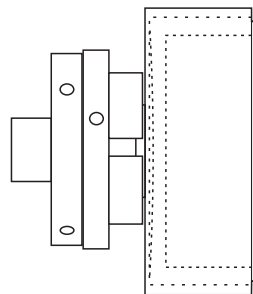
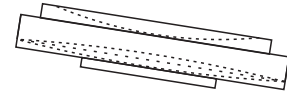
The plan is to complete the outside of the bottom of the box later, so just part the two halves of the box. Set the bottom part of the box aside.



Cut the diameter of the lid down to exact size. Cut the rebate required to fit the lid to the bottom. The underside of the lid may remain flat or be slightly concave.

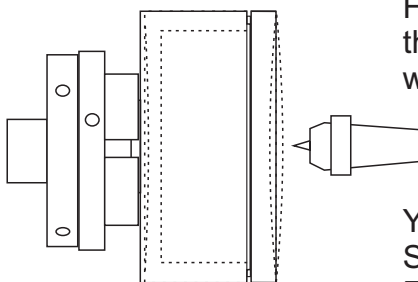
Sand and finish all the underside of the lid.

Take the lid off the chuck and set it aside.



Re-mount the bottom half of the box.

Cut the top surface to the finished dimension and hollow the box. Cut the recess needed for the top to fit nicely. Sand and finish the inside.

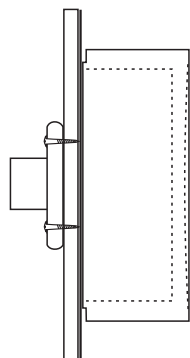


Fit the box top onto the box bottom. Hold it in place with the tailstock. Cut the sides of the box down to the exact width of the top. Sand the sides. Hold the top on with tape and remove the tailstock. Complete the outside of the top. This may be flat or with a little concave or convex shape. Or, cut a cavity to fit a decorative item into the lid.

You may fit that decorative item at this stage.

Sand and finish the top and sides.

Ease the fitting of the lid if needed.



Re-mount the bottom by its upper side on a jam chuck, press-fit faceplate, vacuum chuck, or other device. Remove the spigot and cut the bottom to a slight concave. Sand and finish.

