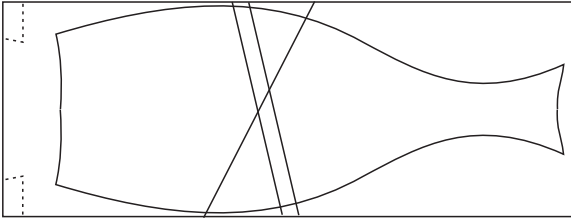
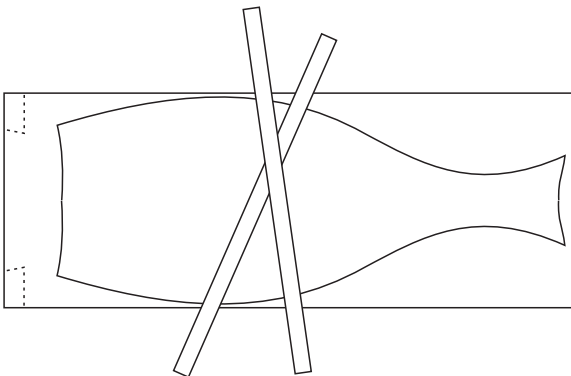


BUD VASE WITH INSET LAMINATES

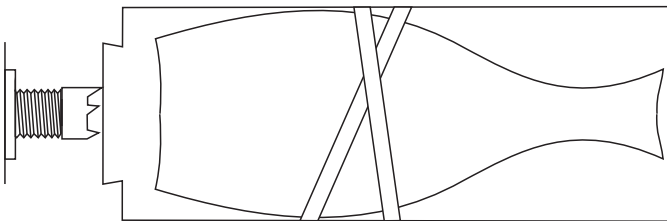
This weed pot may be any size you like. The laminates may also be any thickness you like. The proportions shown here are a block 75 x 75 x 200mm with 5mm thick laminates.



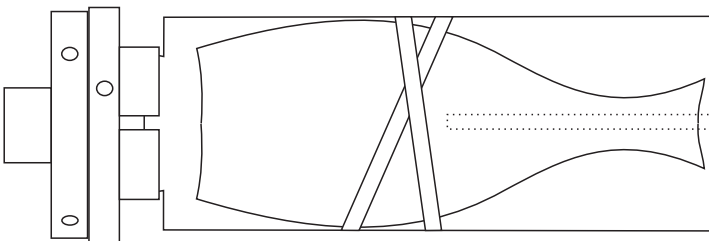
On the block of wood design the weed pot and the location of the laminations. If a second laminate is to cross the first then the cut width must be exactly the thickness of the laminate to be used.



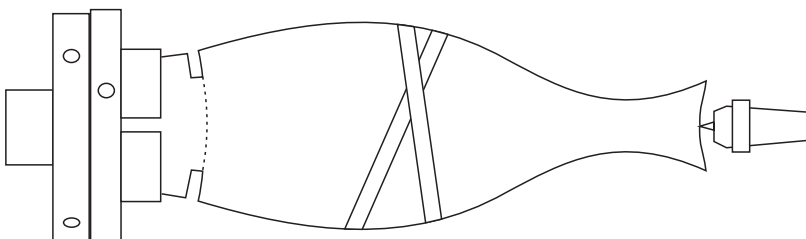
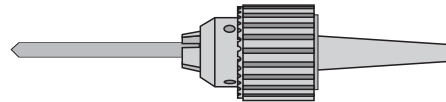
Cut the block. Make the faces perfectly flat. Glue in the laminate. When the glue is set you may cut and glue in a second laminate.



Mount the block between centres. Round it off. Cut a spigot for mounting in a chuck.



Mount the wood in a chuck. Round it off again. Drill the central hole then complete the top face of the vase.



Bring up the tailstock to steady the wood. Shape, sand, and finish the entire vase. Part it off. Hand finish the bottom