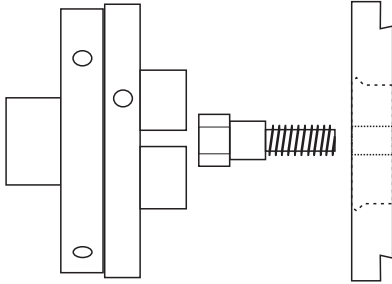




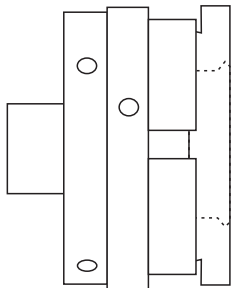
JEWELLERY CHUCK CENTRAL

This plastic chuck is used to make round wooden pendant jewellery or round inlays for box tops or other uses. You may modify the sizes to suit your potential projects. This chuck is designed to be used in a 100mm Teknatool chuck.

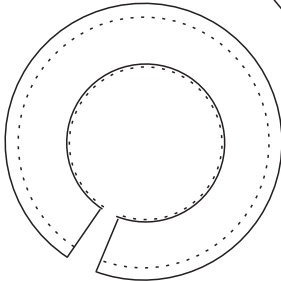
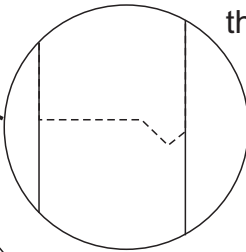
A plastic chuck to hold a 50mm round item in a central position



Cut a piece of 10mm thick plastic chopping board to 95mm square. Hold it on a screw chuck and turn it round. Then cut an 88mm diameter chuck bite on the exposed side.

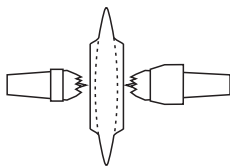


Re-mount the plastic the other way around in a 100mm chuck. Cut a 46mm diameter hole through the plastic. Cut a shallow but sharply-angled dovetail (see enlargement to the left) 2mm into the side of this hole. The widest point within this dovetail should now be 50mm and this point should be less than 2mm back from the face of the plastic.

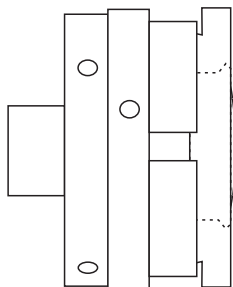


Saw a gap 10mm wide towards one side of the circle. This allows the hole to diminish in size as the chuck jaws are tightened.

Make a 50mm round piece to use in the Jewellery Chuck Central



Start with a piece of wood at least 55mm square. The thickness of this will depend on your intended end-use. Mark the centre of this and mount it on the lathe between two small centres. Steb, or other centres which will not push a deep hole into the wood, are recommended. Ensure that the wood spins true. Round the wood off to exactly 50mm. Cut the edges to the desired finish shape. Sand the edges.



Fit the round piece of wood into the plastic circular chuck now held in 100mm jaws. Close the chuck jaws to hold the wood firmly. Cut, decorate, sand and finish the exposed surface of the wood. If the other side is also to be finished for a jewellery item then turn the wood over and repeat the work.

