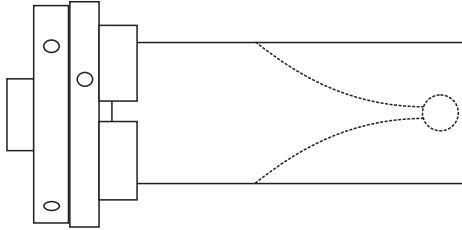
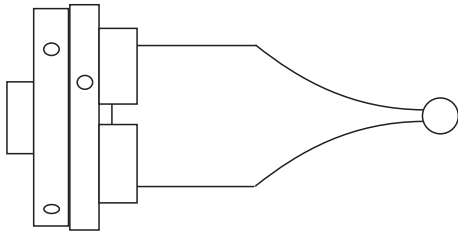


Christmas Tree Decoration - A Star

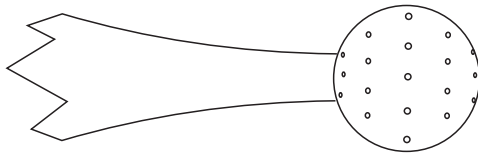
This is a sparkling star to hang on your Christmas Tree. It is made from a small sphere turned on the lathe and toothpicks. You may make it any size you want. The method shown here is to paint and sparkle the components before assembly as the possibility of error appeared to be greater if the star is assembled and then painted and sparkled.



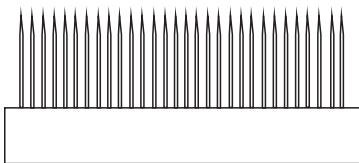
Take a piece of wood that is about 40mm square and 100mm long and mount it in a chuck. This length is needed so that a drill can reach all surfaces of the sphere. Or start with pin jaws and wood 20mm square but still 100mm long.



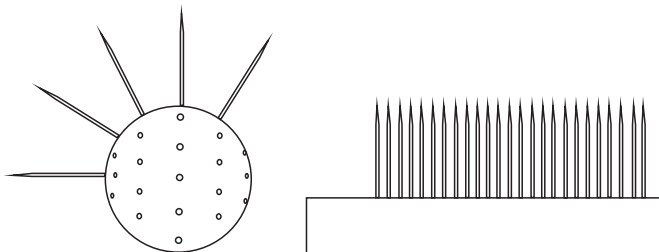
Turn a sphere of about 20mm diameter on the end of the wood. Slope the supporting wood well back to give clearance for drilling holes in the sphere. Turn this support wood as thin as possible bearing in mind the drilling to be done. Sand the sphere. Paint it white and sprinkle on a layer of glitter while the paint is wet.



Drill holes all around the sphere. Measure your toothpicks and make these holes to fit. The star shown here has 36 holes. Every hole must point directly to the centre of the sphere. Part the sphere off. Put a dab of paint on the parting cut and sprinkle glitter on that paint.



Make a board with holes to hold the required number of toothpicks. Drill the holes to the same depth as the holes in the sphere. Cut the toothpicks to length and place them, cut end in, in the board. Paint them white and while the paint is wet sprinkle glitter on them.



Glue the toothpicks into the sphere. Into one hole put, and glue, the ends of a loop of white thread to hang the star on.

