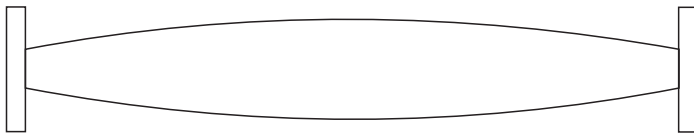
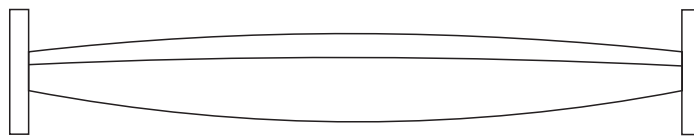


MULTI-CENTRE SPINDLE DESIGNS

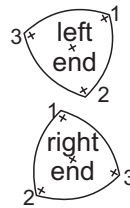
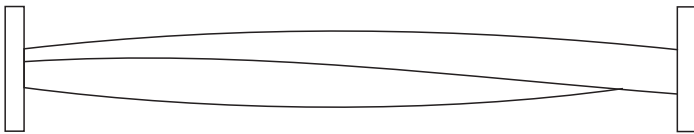
These design ideas may be included in any spindle work. They may be a lamp stem, hat stand stem, stool legs, candle holders, mallet handles, or parts of other decorative work. The ends will need to be altered to make them fit the desired project.



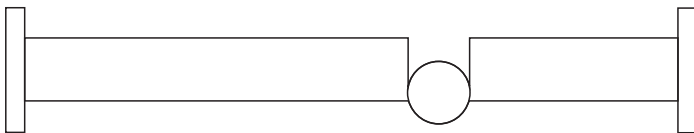
Two-sided and curved. The width of the oval is determined by the wood size and the finished shape by the offset distances.



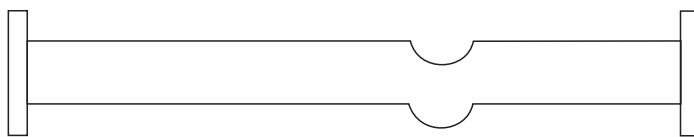
Three-sided and curved. The width of the oval is determined by the wood size and the finished shape by the offset distances.



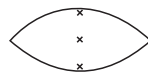
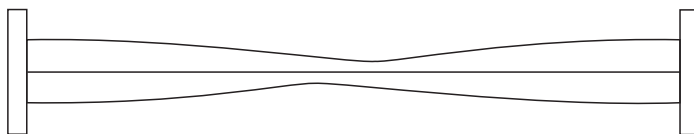
Three-sided, curved, and with a twist. Twist one end by one sixth of the circumference more than the other end.



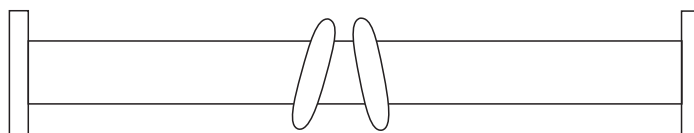
Ball in the middle. The offset must be less than half the diameter of the main part of the spindle. Use the offset centre and turn the ball first.



Hit in the middle. The offset is less than half the diameter of the main part of the spindle. Turn the central shaft first and leave a hump. Then the offset and turn the hit.



Oval and wiggled. To get the wiggled appearance the narrow points are not opposite.



Angled saucers. The offsets used at each end are on opposite sides of centre. Hand-finishing is needed for this spindle.