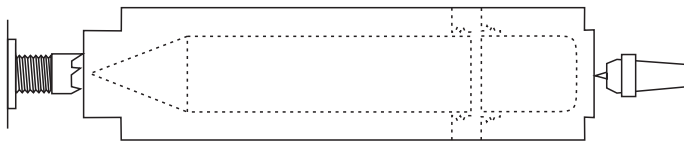


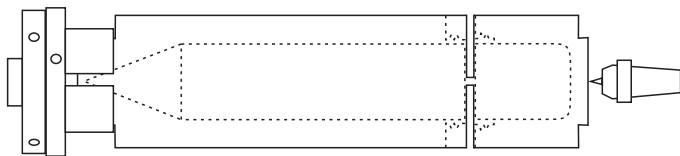
PENCIL CASE

Adapted from the project by Beth Ireland in American Woodturner, August 2018

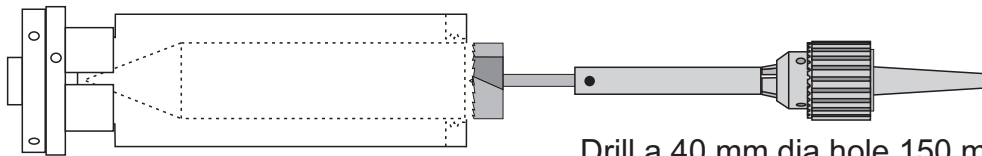
This design is for a threaded lid and use of a router jig to make the flats on the pencil. Start with a block 270 long and 70 mm square with the grain along the long axis.



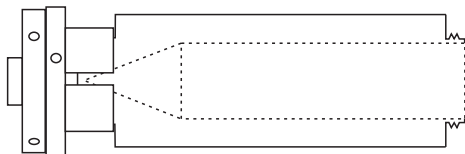
Mount between centres, round off and cut a chuck bite on the cap end. On the point end cut a chuck bite for a deep chuck.



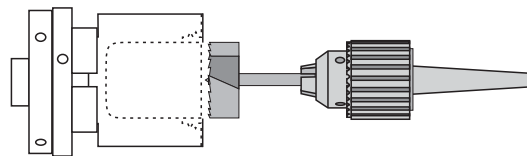
Mount the wood by the point end in deep jaws. Bring up the tailstock to help alignment. Part the cap end off. The parting cut is a 5 mm cut between 60 and 65 mm from the tailstock end.



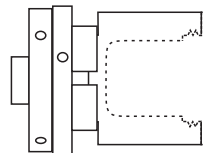
Drill a 40 mm dia hole 150 mm down the wood.



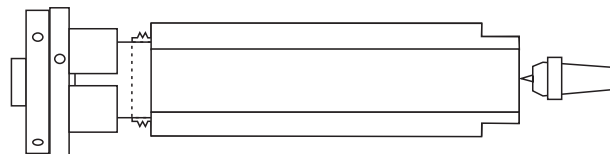
Create a place to cut the thread. The size of this will depend on the size of the thread you plan to cut. Cut the thread. Sand and finish the inside of this part. Turn the diameter down to 54 mm. Remove this part from the chuck.



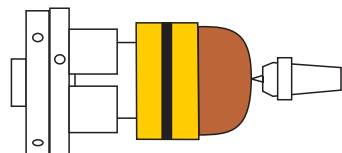
Mount the cap end in a chuck. Drill a 40 mm dia hole 40 mm into the cap then use a chisel to cut that hole deeper and with rounded corners.



Measure the thread on the point end of the box. Cut a place for the internal thread on this cap end and then cut the required thread. Finish the inside. Remove it from the chuck.



Make a 40 mm diameter mandrel mounted in a deep jawed chuck. Put point end on this mandrel. Bring up the tailstock and tape the threaded end to the mandrel. Cut the six flat sides of the pencil. Remove this wood from the mandrel. Mask the threads and paint the flat areas with a bright pencil paint.



Mount the box top on the mandrel (or make a new shorter mandrel). Turn it down to a diameter to match the point end. Then shape it like a pencil eraser. Sand and colour this piece.



Put the point end of the pencil case back on the mandrel. Turn the pointed end to shape. Add a little black marker pen as the lead tip of the pencil.

