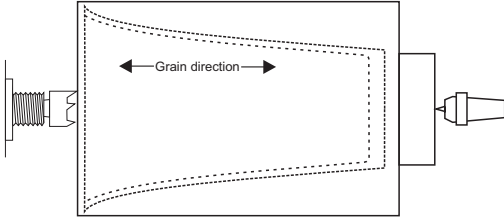


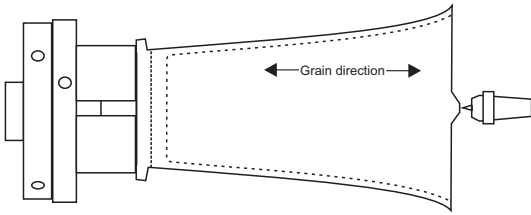
Hollow Form - Vase Shape

This is a good project to learn about the way hollowing tools work as you can see them cutting inside the vessel.

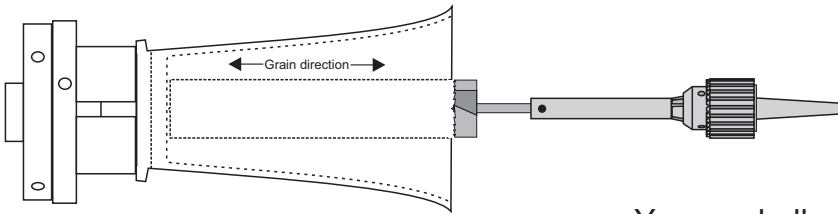
Start with a block of about 150 x 150 x 250 long with the grain along the longer dimension.



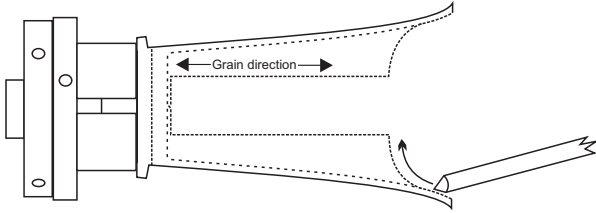
Mount the block between centres. Round it off and cut a chuck bite for a 100mm deep-jawed chuck on one end.



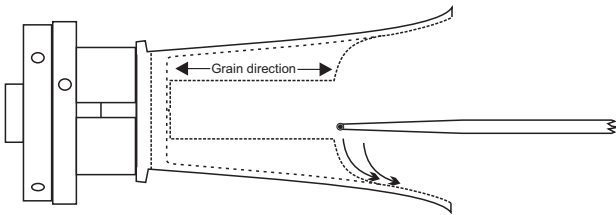
Mount the wood in a 100mm deep-jawed chuck. Bring up the tailstock to ensure centre and safety. Turn the outside shape. Sand the outside to a medium grit.



Drill a hole to the planned depth of the vase. As large a diameter as the available tools will allow.

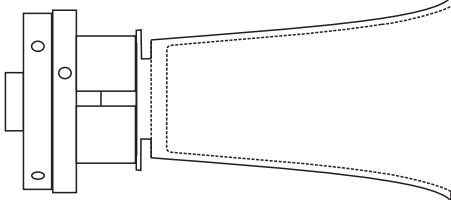


You can hollow some way into the vessel using a bowl gouge. Keep the chisel sharp as you are cutting against the end grain. Take the vessel wall to the finished thickness a short bit at a time while leaving a thicker wall further in for support.



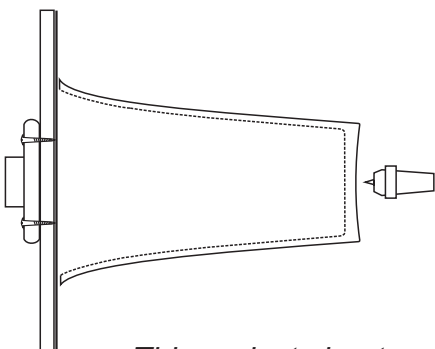
Further in use a hollowing tool cutting down hill. Continue to cut step-by-step to maintain support for the part being hollowed.

Complete each step to the required wall thickness. Use figure 8 calipers to measure the wall thickness. Continue hollowing to the bottom. Sand and finish the inside.



Start the parting off cut. Complete sanding the outside and apply the finish of your choice.

Complete the parting off cut.



Remount the vessel on a jam chuck, vacuum chuck, or up to a rubberised faceplate. Bring up the tailstock. Carefully cut the bottom to a slight concave. Sand and apply the finish of your choice.