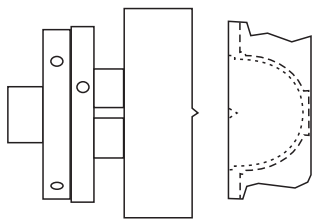


DEER ANTLER BOX

Note: The drawings shown here are not to scale. Your chucks, your faceplates, and your wood, may all be slightly, or considerably, different in size.

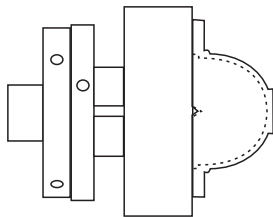
The antler used for this project is not part of a normal shed deer antler which has a central part of dried blood vessels. It is the part left behind when antler at the velvet stage is harvested from farmed deer. The button that remains on the head of the deer, usually $\frac{3}{4}$ to $1\frac{1}{2}$ inches long, becomes solid bone with the normal coronet around the base. This button is shed by the deer at the time of year when they normally shed their antlers. This project aims to have the coronet as the rim of the box bottom.



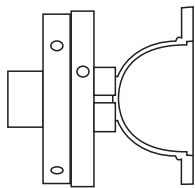
Sand the broad face of the coronet side of a deer antler button until the outer parts of the surface are flat. This will be the upper side of the bottom of the box with the coronet kept whole.

Carefully locate the centre point of this surface. Drill a shallow hole at the centre point.

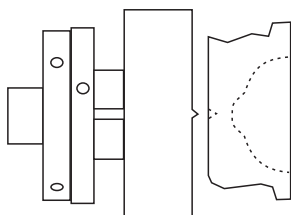
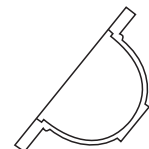
Face off a waste block attached to a faceplate or chuck. Leave a little nipple in the centre so you can use the drilled hole to position the antler button centrally on the block. Glue it on with hot melt glue.



Turn the outside. Make shallow cuts with a small bowl gouge sharpened to 35° . When the shape is achieved a scraper can be used. Make the foot into a short spigot for re-mounting on a small chuck. This antler material is very strong and has no tendency to split.

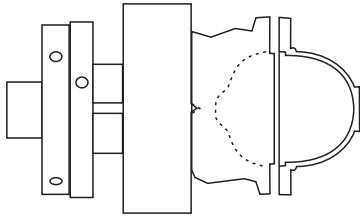


Remount in a small chuck and cut the inside. A very small bowl gouge sharpened to 55° is recommended. Finish cutting the inside with a round-nose scraper. Complete the box bottom by cutting a rebate for the lid to fit into. You can use a scraper or small skew chisel on its side to do this. Finish this by sanding to a very fine grit with wet and dry paper lubricated with water. Apply a hard wax. Set this part aside.

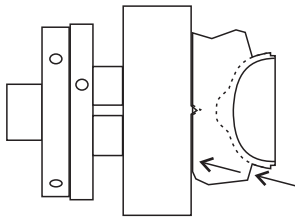


Mount the piece for the lid as you did for the bottom, but this time with the coronet away from the waste block. Cut the underside of the lid flat. Do not cut away the coronet as it can be helpful for taping the jam-chucked bottom later. You may leave the rim with the coronet on the box lid but for this project it is removed.

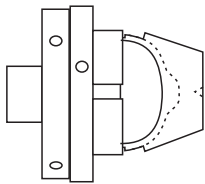
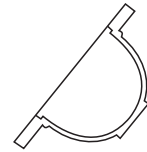
DEER ANTLER BOX page 2



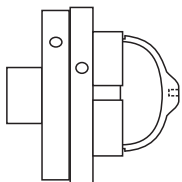
Cut the underside of the lid to the point where the rim and spigot will fit into the rebate of the box bottom. Jam fit the bottom. Tape it to the box top for added security. Tidy the foot. Finish this, and all of the outside of the box bottom, by sanding to a very fine grit with wet and dry paper lubricated with water. Apply a hard wax. Set this part aside.



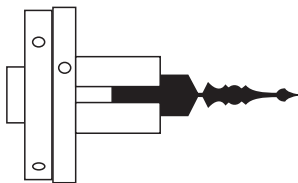
Hollow inside the lid. Also cut and finish a bit up the sides. Finish inside and the bit up the sides by sanding to a very fine grit with wet and dry paper lubricated with water. Apply a hard wax. Then part off as shown by the arrows.



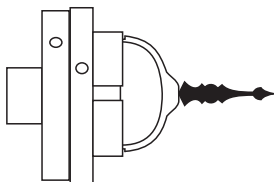
Remount the box top by the rim in a chuck. Or make a jam chuck of hard material and tape or glue the box top to the jam chuck.



Use a small bowl gouge and then a scraper to finish the outside of the box top. Cut a hole to fit finial into the lid of the box. Finish the outside by sanding to a very fine grit with wet and dry paper lubricated with water. Apply a hard wax.



Make a finial of the material of your choice. This finial needs to be decorative as well as strong enough to be a handle to lift the box lid.



Fit the finial to the box lid. It helps to bring a pointed tail centre very close to the finial to ensure it is straight. The work is now finished. Remove it from the chuck.

