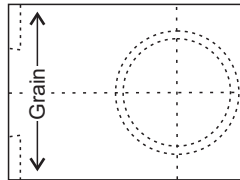
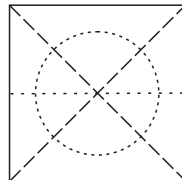


EMERGING BOWL

This produces an intriguing emerging bowl which may utilise a natural edge or subsequent decoration. Start with wood with proportions 3 x 3 square and 4 long. The wood may be all excellent quality for two emerging bowls, or half may be waste wood. The block may be whole and cut in half later; or cut in half and re-assembled with a paper joint, glue, or strong binding before you start turning.

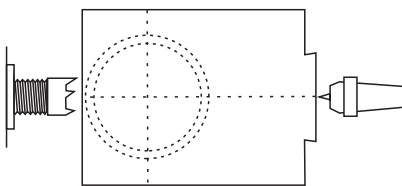


Top

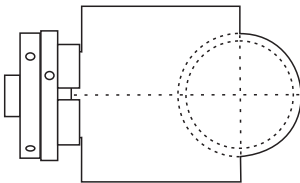


End

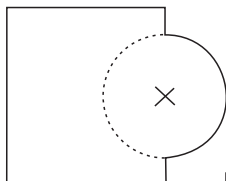
Mark it up with your intended centre marks and cuts.



Mount the wood between centres and cut a chuck bite on one face.

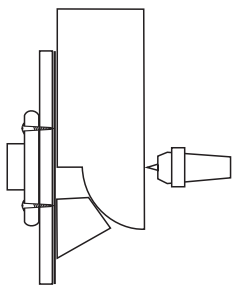


Remount in a chuck and cut the emerging part to an exact hemisphere. Sand this surface.

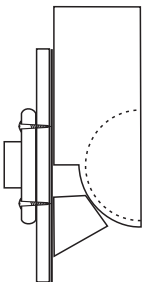


Remove the wood from the chuck and saw off the chuck bite. Then separate the block into two halves. One half may be wasted or used to make a second Emerging Bowl.

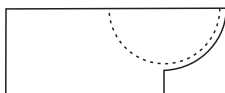
On the piece you plan to finish, carefully measure and mark on the flat surface of the bowl the exact centre of the diameter.



Attach the wood to a faceplate. Hotmelt glue is recommended. To ensure that the centre of the bowl is at the centre of the faceplate bring the tailstock up to the central mark you made. Add glued-in support blocks around the bowl.



Hollow the bowl. Sand and finish the inside.



Remove the wood from the faceplate. Dress and finish all the flat surfaces.