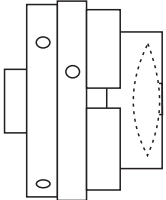
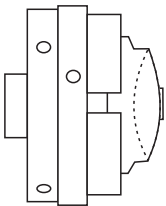


PENDANT JEWELLERY 40

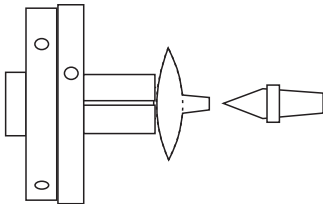
This is a 40mm diameter wooden pendant which you may put a hole in or use findings to attach a chain or other support. The design is intended to be double sided and offer the maker opportunities for embellishment. The chucks detailed in the Tips sheet "Jewellery Chuck 40" are required to make this pendant.



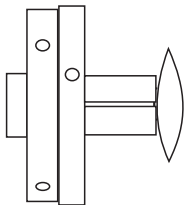
Start with a piece of wood 50mm square and 15 to 25mm thick. Hold this in a chuck. If you don't have a chuck to hold the square wood directly you may need to start between centres and cut a spigot on one side.



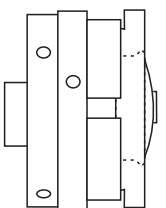
Cut the face of the wood to a nice curve with a 12 to 15mm spigot in the centre for later holding in pin jaws. Cut the wood to just a little over 40mm diameter. Sand this face from the spigot to the edge.



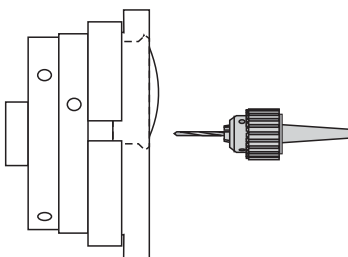
Turn the wood around and hold it in pin jaws. Bring up the tailstock for most of this cutting



Take the tailstock away to finish turning. Then sand and finish. Check that the diameter is now 40mm.



Turn the wood and remount it in the plastic chuck to hold a 40mm round item in a central position (made using Tips sheet "Jewellery Chuck 40"). Now cut off the little spigot, sand and finish this side. You can now mount this wood in a jewellery finding or freehand drill a hole for a string.



Or you can remount the wood in the plastic chuck to hold a 40mm round item in an offset position (made using Tips sheet "Jewellery Chuck 40"). You can drill the hole or cut it with a nice sloping entry using a small gouge. Make this cut from both sides.

Hand sand and buff to finish. Add embellishments of your choice. Or just leave the pretty wood.

