

Gary Field

www.garyfieldwoodcarver.com

Gary uses Australian and exotic fine timbers including Red Cedar, Huon Pine and Rose Mahogany, and carves individually designed functional forms and sculpture. The flowing, organic, convoluting shapes in his work are inspired by nature and Art Nouveau and are incorporated in jewellery boxes, bowls and sculpture.

Objects collected from the bushland and beaches of Eastern Australia are a source of creative ideas. He also finds inspiration for his work in many aspects of this country's natural features. The seed pods, leaves,

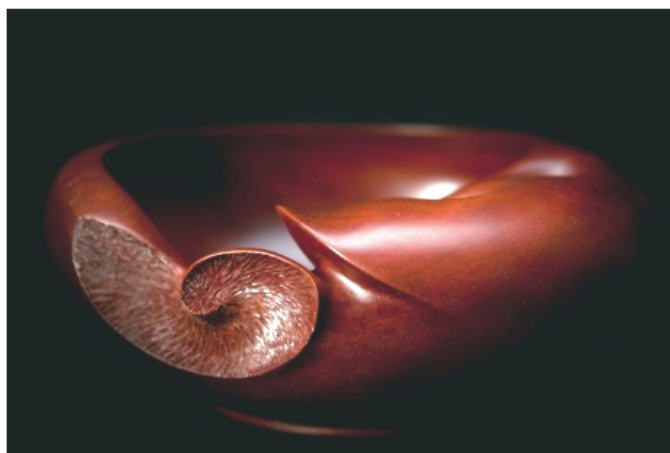
feathers, stones, bones and shells gathered serve to keep the images fresh in his mind when he returns to the workshop to create original and unusual jewellery boxes, bowls, furniture and sculpture. Gary first makes a series of sketches or clay models before selecting the piece of timber that will become a work of art.



He is environmentally conscious and has salvaged much of the raw materials himself and believes that every piece

of a once living tree should be used. He especially enjoys creating boxes made from reclaimed and recycled timbers that incorporate eye catching features. His boxes can be treasured as a special keepsake or used to hold a precious item.

Gary has work on permanent display at The Australian Woodwork Gallery, Hunter Valley & Manly Gallery, Manly and has work in collections in Australia and overseas.



Observation to Expression



Gary will be sharing his approach to inspiration, design, woodcarving & sculpture. In his demonstration he will be using a slide presentation & will discuss tools and techniques.

Abstract sculpture is just one form of woodworking that he is interested in and is the style that he is most passionate about. He will discuss the creation of 3D models and materials that can be used to create them. He will be using a combination of power grinders, big and small and hand tools to carve an abstract piece.



The Not So Delicate Art of Spoon Carving

Spoons have been made by humans for thousands of years, by countless makers, but there is still plenty of opportunity for self expression.

The humble spoon has all the elements for the introduction to woodcarving. The handle can become a sculptural effect and the spoon can be taken to the next level and developed into a bowl.

In this demonstration Gary will show his approach to designing and carving a spoon. Equipping you with the skills to tackle more challenging projects & transforming a blank of timber into a useful object of visual beauty.



Carving a Pod from a Turned Blank

Gary will be sharing his approach to inspiration, design, woodcarving and sculpture.

In the hands on demonstration Gary will show his approach to designing and carving a seed pod from a turned blank. He will be using a combination of power grinders and hand tools.

In this rotation he will be using a slide presentation and will discuss tools and techniques.

