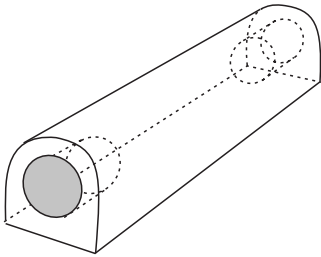
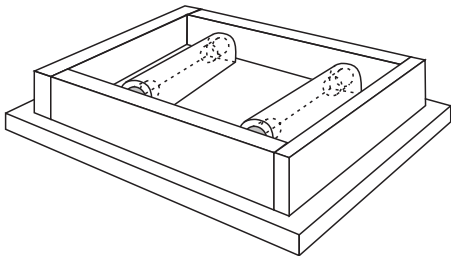


EPOXY PENS

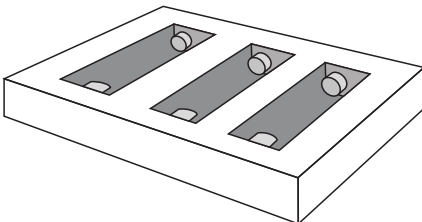
Pens are commonly made from one or two pieces of wood with a slim brass interior tube. This project plan is a method to pour epoxy resin around the brass pen barrel. A slim layer of decoration may be wrapped around the brass before the resin is poured. Nothing in this plan is to scale as you will need to modify all sizes and shapes to suit the pen of your choice.



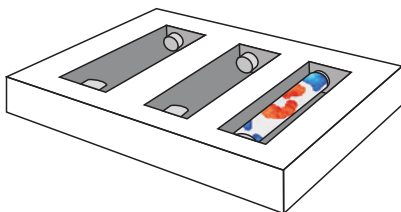
Make model pen blanks over which you will pour silicone to make a mould. The short hole in each end must be the same diameter as the inside of the pen barrel you plan to use and 6mm deep. Overall length is about 2mm longer than the pen barrel you plan to use. Overall width and height is a little more than your planned pen width. Mixing of silicone and epoxy resin later in this project will be easier if you calculate the volume of this model pen blank now.



Make a moulding box to accommodate the model pen blanks over which you will pour liquid silicone. Make it so there is about a 15mm space between the model pen blanks and the sides, 10mm between each blank, and 10mm over the top. It will be easier to use if the sides are removable. Stick the model pen blanks securely to the floor of the box with double-sided tape. Calculate the volume of silicone needed to fill the box. Mix the two pot silicone and pour. You will need to use a syringe to ensure that the holes in the ends of the blanks are full of silicone.

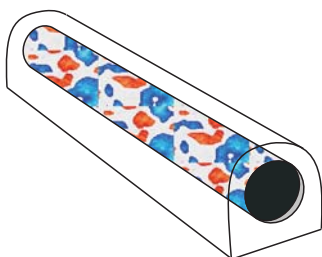


When the silicone is set, remove it from the box and remove the model pen blanks.



Put your prepared pen tubes into the mould. They should fit neatly onto the stoppers at each end of the mould with a millimetre or two between the end of the brass and wall of the mould at both ends.

Calculate the quantity of resin required, mix the two pot resin and pour.



When the resin is set, remove the pen part by flexing the mould away from the ends. If you take care of the mould it will be good for many more pens.

Sand the end of the pen part down to the brass. Do not try a pen mill but use a sanding table or make a jig to ensure that the pen part is perfectly at right angles to the sandpaper. This may make a little burr on the inside of the brass - remove this.

Turn and finish the pen part. Work as you would for a wooden pen part and then proceed on to very fine sandpaper and resin polishing pastes.