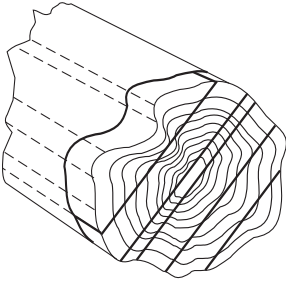
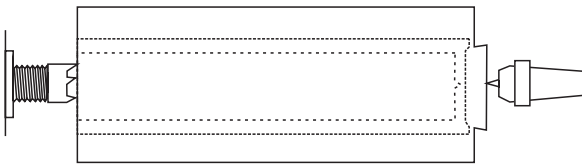


## TUBES

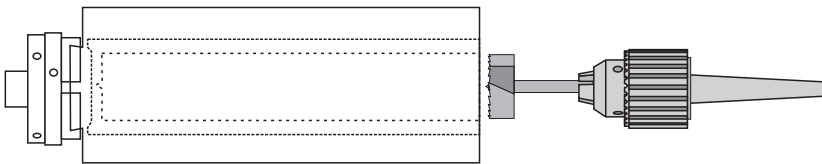
Tubes of wood may be made in various ways. This project uses wet wood which may shrink and bend as it dries. Further decoration may be added at any stage in the project.



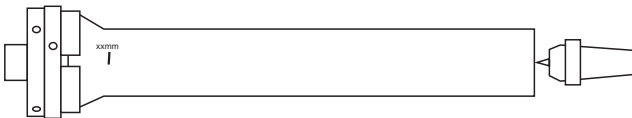
Cut the wet wood across the log. The different shrinkage between heart and sapwood should distort the finished tube. The wood may be as long as you wish and should be at least twice the width of the drill you intend to use.



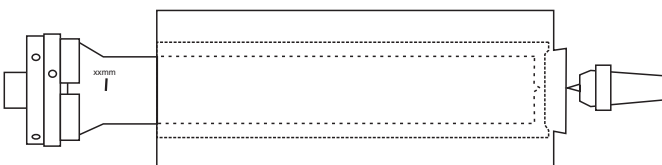
Mount the wood between centres. Round it off and cut a chuck bite at the end you intend to be the bottom of the tube.



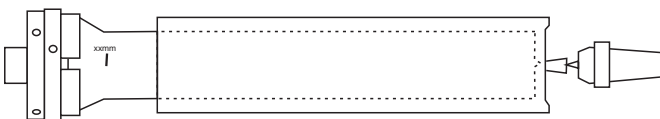
Mount the wood in a chuck. Use a flat-faced bit to drill a hole to the desired depth. Remove the drilled wood from the lathe.



Use a dry piece of wood to make a mandrel. Make the thickness of this just a little more than the width of the drill you used on the wet wood. Near the chuck end of the mandrel mark a point with the measurement from the tailstock end.



Fit the drilled wet wood over the mandrel. Trim the mandrel so that it is a neat fit. Keep the mandrel perfectly aligned with the tailstock. Bring up the tailstock to hold the wood on the mandrel.



Cut the wood down to the desired tube thickness. Use the measured mark on the mandrel to know where the mandrel ends inside the tube. Cut the foot of the tube to shape.

Remove the tube from the mandrel and set it aside to dry. Embellishments and finishes can be applied when it is dry.