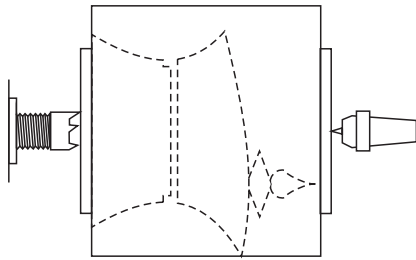


COMMISSIONAIRE BOX

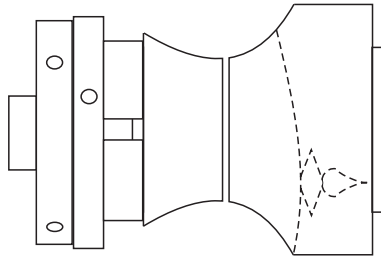
Adapted from Box 40 in *Turned Boxes: 50 Designs* by Chris Stott.

Note: The drawings shown here are not to scale. Your chucks, your faceplates, and your wood, may all be slightly, or considerably, different in size.

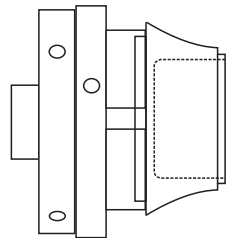
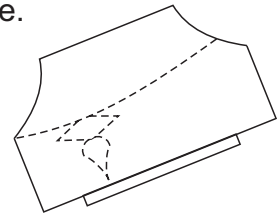
You can make this box any size you like, but, to fit the offset chuck as described here you will be best to start with a block no larger than about a 3 inch cube. The grain direction is vertical in the finished box but, if you wish to add a separate finial, you can make it cross grain.



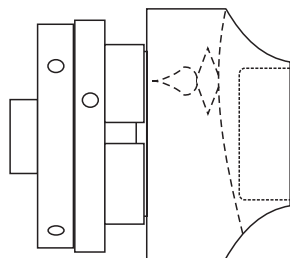
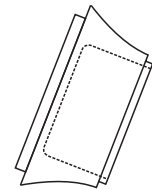
Mount the wood between centres. Round it off and cut a spigot on each end. Plan your box to have about one third of its height in the finial.



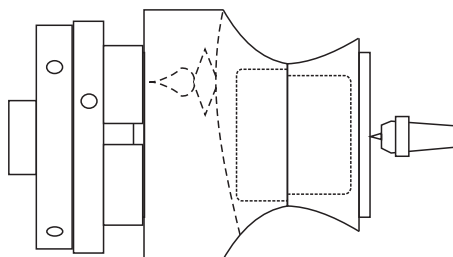
Mount the work in a chuck using the spigot on the bottom of the planned box. Cut the curved sides of the box. A spindle roughing gouge is good for this cut. Part off the top and set it aside.



Cut the lip for the lid to fit onto later. Hollow the box. Sand and finish all the inside and the lip of the box. Remove this part of the box from the chuck.

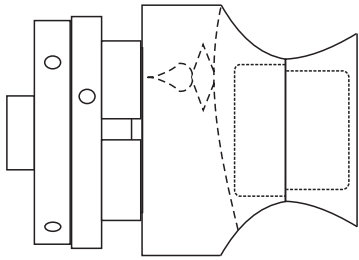


Return the top of the box to the chuck. Hollow it to a size that will also allow the bottom to fit neatly. Take care with the hollowing depth where the curve of the top is planned to be cut. Sand and finish the inside and the face the bottom will fit up to.

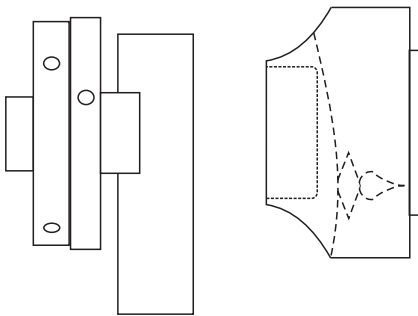


Fit the box bottom back to the box top. Bring up the tailstock to hold it in place. True up the joint between the top and bottom. Sand and finish all this curved outer surface.

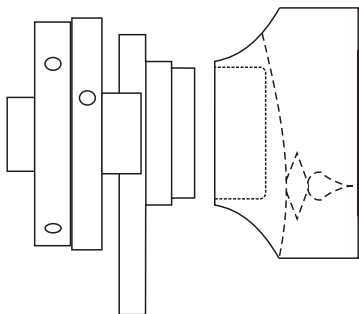
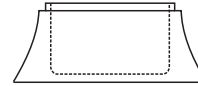
COMMISSIONAIRE BOX Page 2



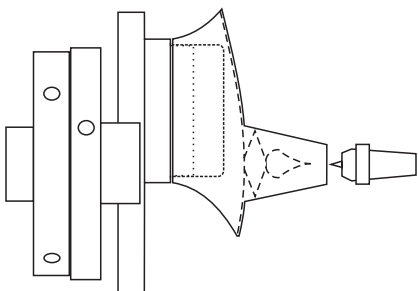
Apply some tape to hold the two box halves together. Remove the tailstock and finish the box bottom. Cut it to a very slight concave curve. Remove the tape and take both halves of the box off the chuck.



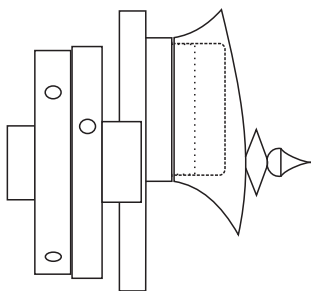
Make a jam chuck. Take a piece of sound scrap wood that is a bit more than the width and more than the depth of the hollow in the box top, and at least twice as long as it is wide. Remove two jaws from a chuck and grip this wood off-centre in the chuck.



Cut the scrap wood away to make a spigot which will fit neatly into the hollow of the box top. Cut a second step in the scrap wood to make it the same diameter as the outside of the join area of the box top so the box top can be taped to the scrap wood. Measure the depth of the hollow and mark it, using a soft pencil, on the outside of the top.



Note the grain pattern for the top of the box and rotate it for the best location of the finial. Slide the scrap wood and box top off centre in the chuck jaws. Bring up the tailstock to check the finial location. Tape the box lid to the scrap wood. Tighten the tailstock to the wood. Use a small bowl gouge to cut away the wood on the top of the box to a nice curve. Watch the inner depth mark you put on the outside. Keep the lathe speed up to make this hit-and-miss cutting easier.



Take away the tailstock and use a spindle gouge to cut the finial. Totally sand and finish the top and finial. Take off the tape and remove the box lid from the chuck.

