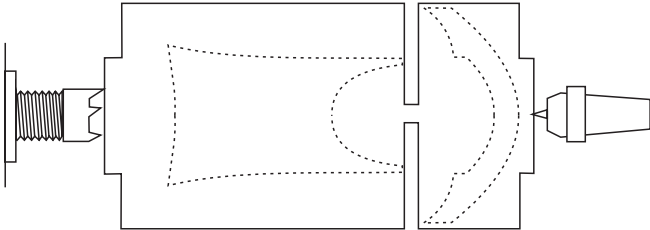
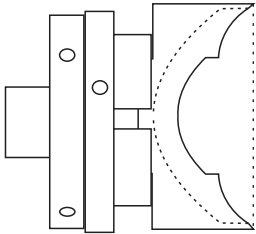


## Mushroom Box

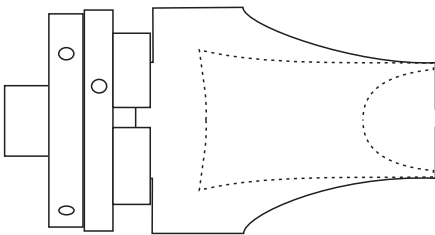
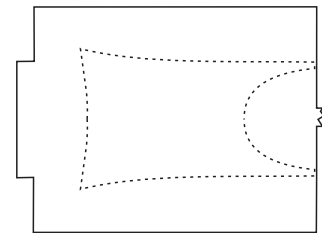
This is a small decorative box to contain just one or two very small treasures. No dimensions are shown as you need to adjust the project to the wood and chuck sizes that you have.



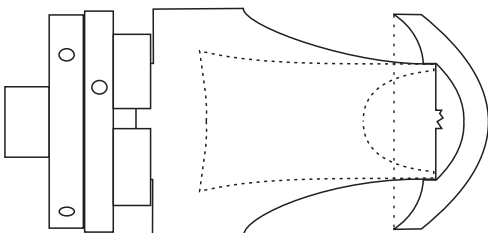
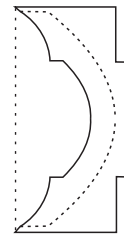
Mount your chosen wood between centres. Round it off. Cut a spigot on both ends. Part it off to separate the lid and base you will make. Set The base part aside.



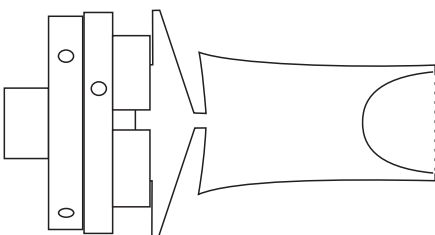
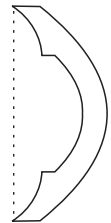
Mount the lid part in a chuck and completely cut and finish the inside. Set this part aside.



Remount the base part in a chuck. Cut the outside so that it is a jam chuck for the lid.



Jam the lid on and completely finish the outside. Remove the completed lid and set it aside.



Hollow and finish the inside of the bottom part to be just a small cavity. Finish the outside and part it off. Clean up the bottom by hand. Assemble the box. Decorate as you wish.

